

# TRANSMISSIONS & V-DRIVES

Borg Warner/Velvet Drive

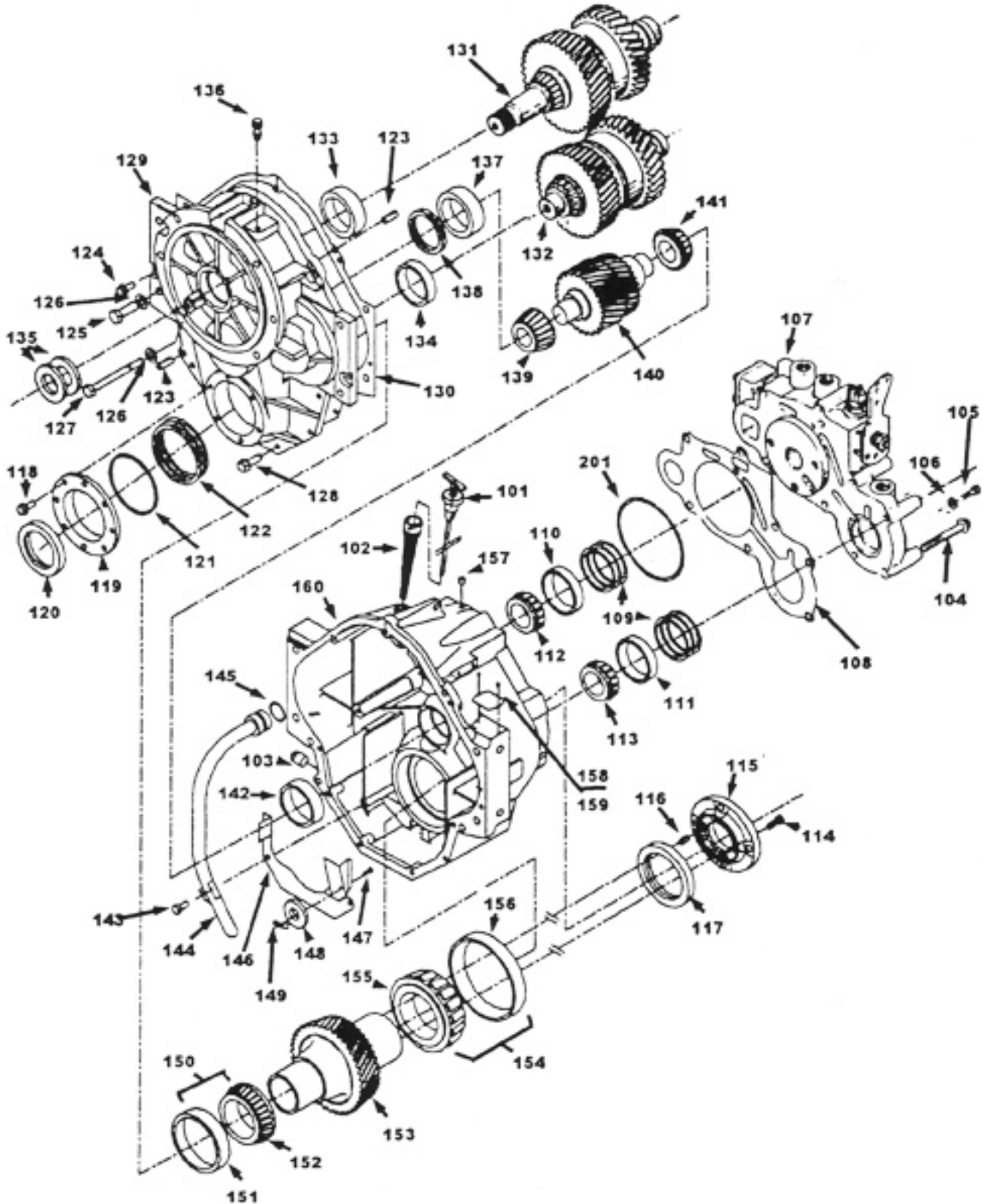
5000 Series V-Drive Breakdown

*Velvet Drive*  
TRANSMISSIONS

## 5000 SERIES V-DRIVE BREAKDOWN

Part Number Breakdown - pg. 235

TRANSMISSIONS & V-DRIVES



# TRANSMISSIONS & V-DRIVES

## Borg Warner/Velvet Drive

5000 Series V-Drive Breakdown



Parts Diagram Breakdown - pg. 234

### 5000 SERIES V-DRIVE BREAKDOWN

Diagram Number	P/N	Description	Qty.	Diagram Number	P/N	Description	Qty.
101	W2002-559003	Dipstick	1	131A	W2002-689002	Input Shaft & Clutch Assembly (1.5:1 ratio)	1
102	W2001-535001	Dipstick Tube	1	131B	W2002-689003	Input Shaft & Clutch Assembly (2.0:1 ratio)	1
103	W444583	Drain Plug	1	131C	W2002-689004	Input Shaft & Clutch Assembly (2.5:1 ratio)	1
104	W1000-183088	Bolt, Hex Head, M10 x 1.5 x 70	7	132	W2002-567001	Lay Shaft & Clutch Assembly (1.25:1 ratio)	1
105	W2000-183001	Bolt, Hex Head, M5 x 0.8 x 001	1	132A	W2002-567002	Lay Shaft & Clutch Assembly (1.5:1 ratio)	1
106	W2000-047001	Washer	1	132B	W2002-567003	Lay Shaft & Clutch Assembly (2.0:1 ratio)	1
107	W2001-736002	Valve & Pump Assembly	1	132C	W2002-567004	Lay Shaft & Clutch Assembly (2.5:1 ratio)	1
108	W2001-736005	Gasket, Pump	1	133	W1000-133053	Bearing Cup, Input Shaft Cover Side	1
109	W1000-037058	Shim, Input and Lay Shaft (.0030in thick)	AR	134	W1000-133051	Bearing Cup, Lay Shaft, Cover Side	1
109A	W1000-037060	Shim, Input and Lay Shaft (.0070in thick)	AR	135	W1000-044065	Seal, Input Shaft	2
109B	W1000-037061	Shim, Input and Lay Shaft (.0090in thick)	AR	136	WA4740G	Vent	1
109C	W1000-037062	Shim, Input and Lay Shaft (.0200in thick)	AR	137	W1000-133053	Bearing Cup, Intermediate, Cover	1
109D	W1000-037063	Shim, Input and Lay Shaft (.0300in thick)	AR	138	W2002-037011	Shim, Intermediate Shaft (.003in)	AR
109E	W1000-037064	Shim, Input and Lay Shaft (.0400in thick)	AR	138A	W2002-037012	Shim, Intermediate Shaft (.005in)	AR
109F	W1000-037065	Shim, Input and Lay Shaft (.0500in thick)	AR	138B	W2002-037013	Shim, Intermediate Shaft (.007in)	AR
109G	W1000-037066	Shim, Input and Lay Shaft (.0600in thick)	AR	138C	W2002-037014	Shim, Intermediate Shaft (.009in)	AR
109H	W1000-037067	Shim, Input and Lay Shaft (.0700in thick)	AR	138D	W2002-037015	Shim, Intermediate Shaft (.020in)	AR
110	W1000-133009	Bearing Cup, Input Shaft Pump Side	1	138E	W2002-037016	Shim, Intermediate Shaft (.030in)	AR
111	W1000-133009	Bearing Cup, Lay Shaft Pump Side	1	138F	W2002-037017	Shim, Intermediate Shaft (.040in)	AR
112	W1000-133010	Bearing Cone, Input Shaft Cover Side	1	138G	W2002-037018	Shim, Intermediate Shaft (.050in)	AR
113	W1000-133010	Bearing Cone, Lay Shaft Cover Side	1	138H	W2002-037019	Shim, Intermediate Shaft (.060in)	AR
114	W1000-183093	Bolt, Flange	8	138I	W2002-037020	Shim, Intermediate Shaft (.070in)	AR
115	W2002-031001	Flange	1	139t	W2000-133075	Bearing Cone Intermediate, Cover	1
116	W2002-043001	Pin	4	140	W2002-584001	Intermediate Shaft, 28 teeth, (1.25 ratio)	1
117	W2000-044004	Seal, Output Flange Side	1	140A	W2002-584002	Intermediate Shaft, 31 teeth, (1.50 ratio)	1
118	W11502693	Bolt, Bearing Retainer, Output	6	140B	W2002-584003	Intermediate Shaft, 36 teeth (2.0 ratio)	1
119	W2002-039001	Bearing Retainer, Output	1	140C	W2002-584004	Intermediate Shaft, 39 teeth (2.5 ratio)	1
120	W2000-044003	Seal, Output Retainer	1	141	W2000-133071	Bearing Cove, Intermediate, Case	1
121	W2000-141500	O-Ring, Output Bearing Retainer	1	142	W1000-133070	Bearing Cup, Intermediate, Case	1
122	W2002-037001	Shim, Output Shaft (.0098in thick)	AR	143	W1000-183090	Bolt, Oil Shield and Pick-Up Tube	1
122A	W2002-037002	Shim, Output Shaft (.0198in thick)	AR	144	W2002-534001	Pick-Up Tube, Oil	1
122B	W2002-037003	Shim, Output Shaft (.0295in thick)	AR	145	W1000-141214	O-Ring, Pick Up Tube	1
122C	W2002-037004	Shim, Output Shaft (.0393in thick)	AR	146	W2002-036001	Shield, Oil	1
122D	W2002-037005	Shim, Output Shaft (.0040in thick)	AR	147	W2000-183009	Screw, Magnet attach.	1
122E	W2002-037006	Shim, Output Shaft (.0070in thick)	AR	148	W4915	Magnet	1
123	W2002-043002	Pin, Roll	2	149	W1332-149003	Spring Nut, Flat	1
124	W11502693	Bolt, Hex Head, M8 x 1.25 x 20	2	150	W2000-633002	Bearing Output Cover Side Cone & Cup	1
125	W1000-183092	Bolt, Hex Head M12 x 1.75 x 35	4	151	W2000-133072	Bearing Cup, Output Cover Side	1
126	W120395	Washer	5	152	W2000-133073	Bearing Cone, Output Cover Side	1
127	W1300-183007	Bolt, Hex Head M10 x 1.5 x 110mm	1	153	W2002-070001	Gear, Output	1
128	W1300-183018	Bolt, Hex Head M10 x 1.5 x 30mm	9	154	W2000-633001	Bearing Output Case Side Cone & Cup	1
129	W2002-172001	Cover, Case	1	155	W2000-133069	Bearing Cone, Output Case Side	1
130	W2002-045002	Gasket, Cover	1	156	W2000-133068	Bearing Cup, Output Case Side	1
131	W2002-689001	Input Shaft & Clutch Assembly (1.25:1 ratio)	1	157	W444685	Pipe Plug	1
				158	W1000-183077	Rivet	2
				159	N/A	Name Plate	N/A
				160	W2002-065001	Case	
					W2002-410001	Gasket & Seal Kit	1
					W2002-410002	Gasket, Seal, & Clutch Kit	1

TRANSMISSIONS & V-DRIVES

# TRANSMISSIONS & V-DRIVES

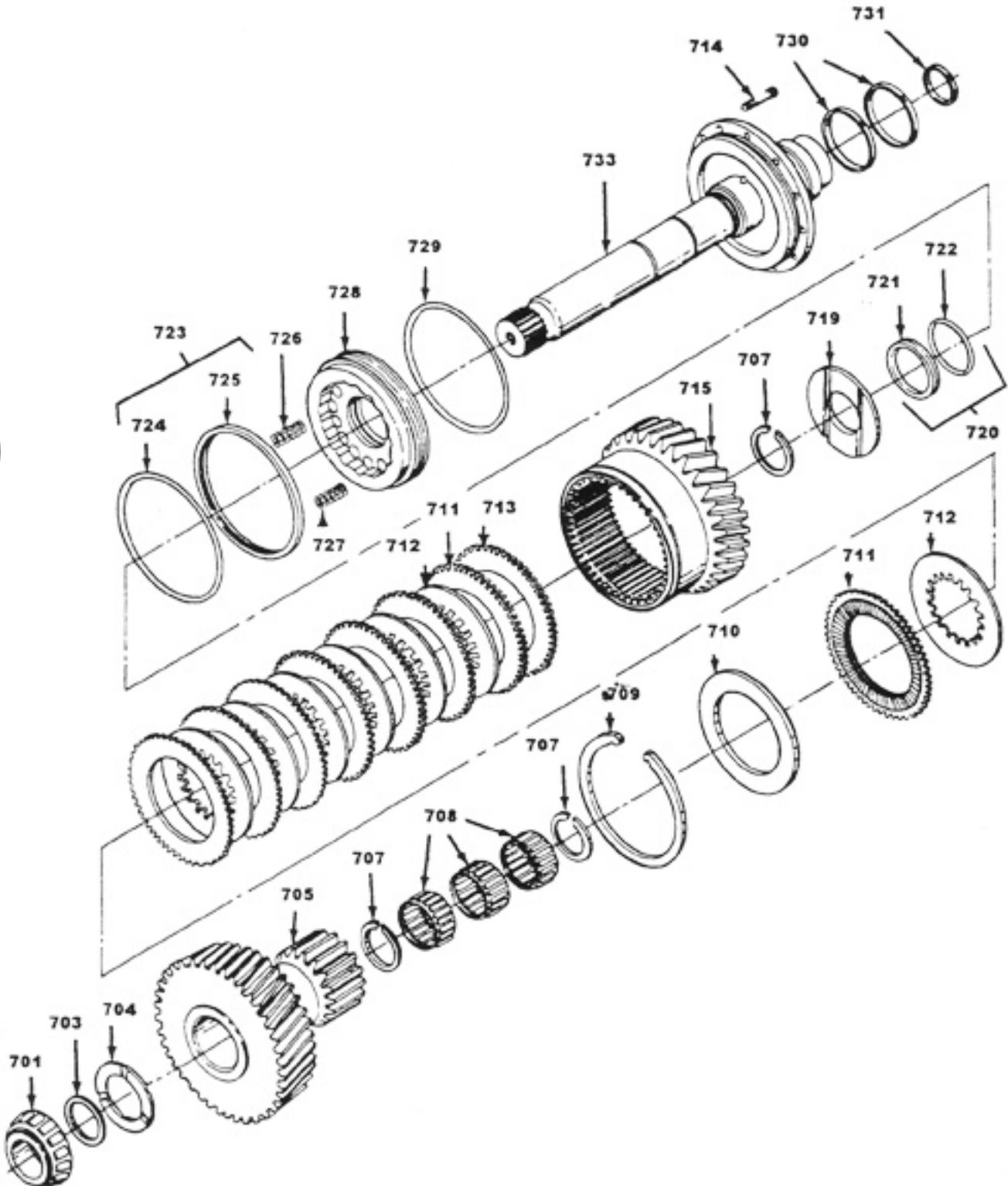
Borg Warner/Velvet Drive

5000 Series V-Drive Breakdown

*Velvet Drive*  
TRANSMISSIONS

## 5000 SERIES V-DRIVE INPUT SHAFT BREAKDOWN

Part Number Breakdown - pg. 237



TRANSMISSIONS & V-DRIVES

# TRANSMISSIONS & V-DRIVES

Borg Warner/Velvet Drive

5000 Series V-Drive Breakdown



## 5000 SERIES V-DRIVE INPUT SHAFT BREAKDOWN

Diagram Number	P/N	Description	Qty.
701	W1000-133052	Bearing Cone	1
703	W2001-053001	Spacer	
704	W1000-193022	Thrustwasher	1
705	W2002-085001	Gear, 35 teeth, (1.25:1 ratio)	1
705A	W2002-085002	Gear, 33 teeth, (1.5:1 ratio)	1
705B	W2002-085003	Gear, 29 teeth, (2.0:1 ratio)	1
705C	W2002-085004	Gear, 25 teeth, (2.5:1 ratio)	1
706	W2002-085001	Gear, 35 teeth, (1.25:1 ratio)	1
706A	W2002-085002	Gear, 33 teeth, (1.5:1 ratio)	1
706B	W2002-085003	Gear, 29 teeth, (2.0:1 ratio)	1
706C	W2002-085004	Gear, 25 teeth, (2.5:1 ratio)	1
707	W1000-139068	Snap Ring	4
708	W1000-132055	Bearing	3
709	W1000-139069	Snap Ring	1
710	W2001-062003	Pressure Plate, Reaction	1
711	W2001-666001	Clutch Plate, Bronze	8
712	W2001-166002	Clutch Plate, Steel	7
713	W2001-062002	Spacer Plate, Steel Backing	1
714	W2000-183002	Bolt	12
715	W2001-125001	Cylinder/Clutch Gear (R)	1
719	W2001-040001	Spring Retainer (Grooves)	1
720	W1000-516020	Seal Assembly	1
721	W1000-016020	Seal, Inner	1
722	W1000-141130	O-Ring, Inner	1
723	W1000-516019	Seal Assembly	1
724	W1000-141241	O-Ring, Outer	1
725	W1000-016019	Seal, Outer	1
726	W2001-156001	Spring, Short Heavy Wire	4
727	W1016-156003	Spring, Longer Light Wire	12
728	W2001-624001	Piston, Clutch	1
729	W1000-141045	O-Ring	1
730	W2000-016050	Rings, Sealing	2
731	W1000-016021	Ring, Sealing	1
733	W2001-189001	Input Shaft	1

TRANSMISSIONS & V-DRIVES

# TRANSMISSIONS & V-DRIVES

Borg Warner/Velvet Drive

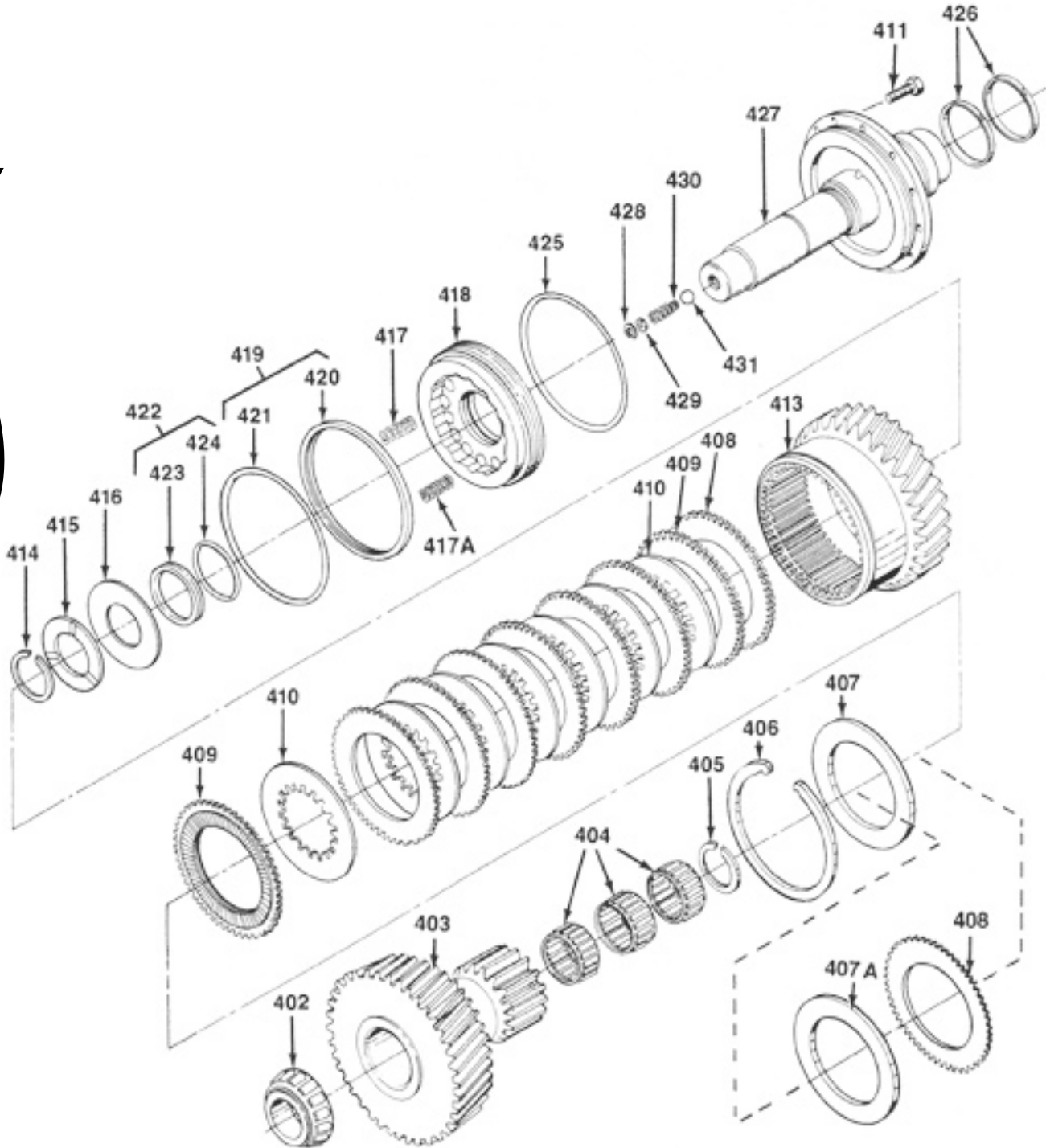
5000 Series V-Drive Breakdown

*Velvet Drive*  
TRANSMISSIONS

## 5000 SERIES V-DRIVE LAY SHAFT BREAKDOWN

Part Number Breakdown - pg. 239

TRANSMISSIONS & V-DRIVES



# TRANSMISSIONS & V-DRIVES

Borg Warner/Velvet Drive

5000 Series V-Drive Breakdown



## 5000 SERIES V-DRIVE LAY SHAFT BREAKDOWN

Diagram Number	P/N	Description	Qty.
702	W1000-133050	Bearing Cone	1
705	W2002-085001	Gear, 35 teeth, (1.25:1 ratio)	1
705A	W2002-085002	Gear, 33 teeth, (1.5:1 ratio)	1
705B	W2002-085003	Gear, 29 teeth, (2.0:1 ratio)	1
705C	W2002-085004	Gear, 25 teeth, (2.5:1 ratio)	1
706	W2002-085001	Gear, 35 teeth, (1.25:1 ratio)	1
706A	W2002-085002	Gear, 33 teeth, (1.5:1 ratio)	1
706B	W2002-085003	Gear, 29 teeth, (2.0:1 ratio)	1
706C	W2002-085004	Gear, 25 teeth, (2.5:1 ratio)	1
707	W1000-139068	Snap Ring	2
708	W1000-132055	Bearing	3
709	W1000-139069	Snap Ring	1
710	W2001-062003	Pressure Plate, Reaction	1
711	W2001-666001	Clutch Plate, Bronze	8
712	W2001-166002	Clutch Plate, Steel	7
713	W2001-062002	Spacer Plate, Steel Backing	1
714	W2000-183002	Bolt	12
716	W2001-125002	Cylinder/Clutch Gear (LH)	1
717	W1000-193019	Thrustwasher	1
718	W2001-040003	Spring Retainer (Flat)	1
720	W1000-516020	Seal Assembly	1
721	W1000-016020	Seal, Inner	1
722	W1000-141130	O-Ring, Inner	1
723	W1000-516019	Seal Assembly	1
724	W1000-141241	O-Ring, Outer	1
725	W1000-016019	Seal, Outer	1
726	W2001-156001	Spring, Short Heavy Wire	4
727	W1016-156003	Spring, Longer Light Wire	12
728	W2001-624001	Piston, Clutch	1
729	W1000-141045	O-Ring	1
730	W2000-016050	Rings, Sealing	2
732	W2001-067001	Lay Shaft	1
734	W453595	Ball (pressure relief)	1
735	W729-273	Spring (pressure relief)	1
736	W2000-053001	Washer (pressure relief)	1
737	W2000-139001	Snap Ring (pressure relief)	1

TRANSMISSIONS & V-DRIVES

# TRANSMISSIONS & V-DRIVES

## Borg Warner/Velvet Drive

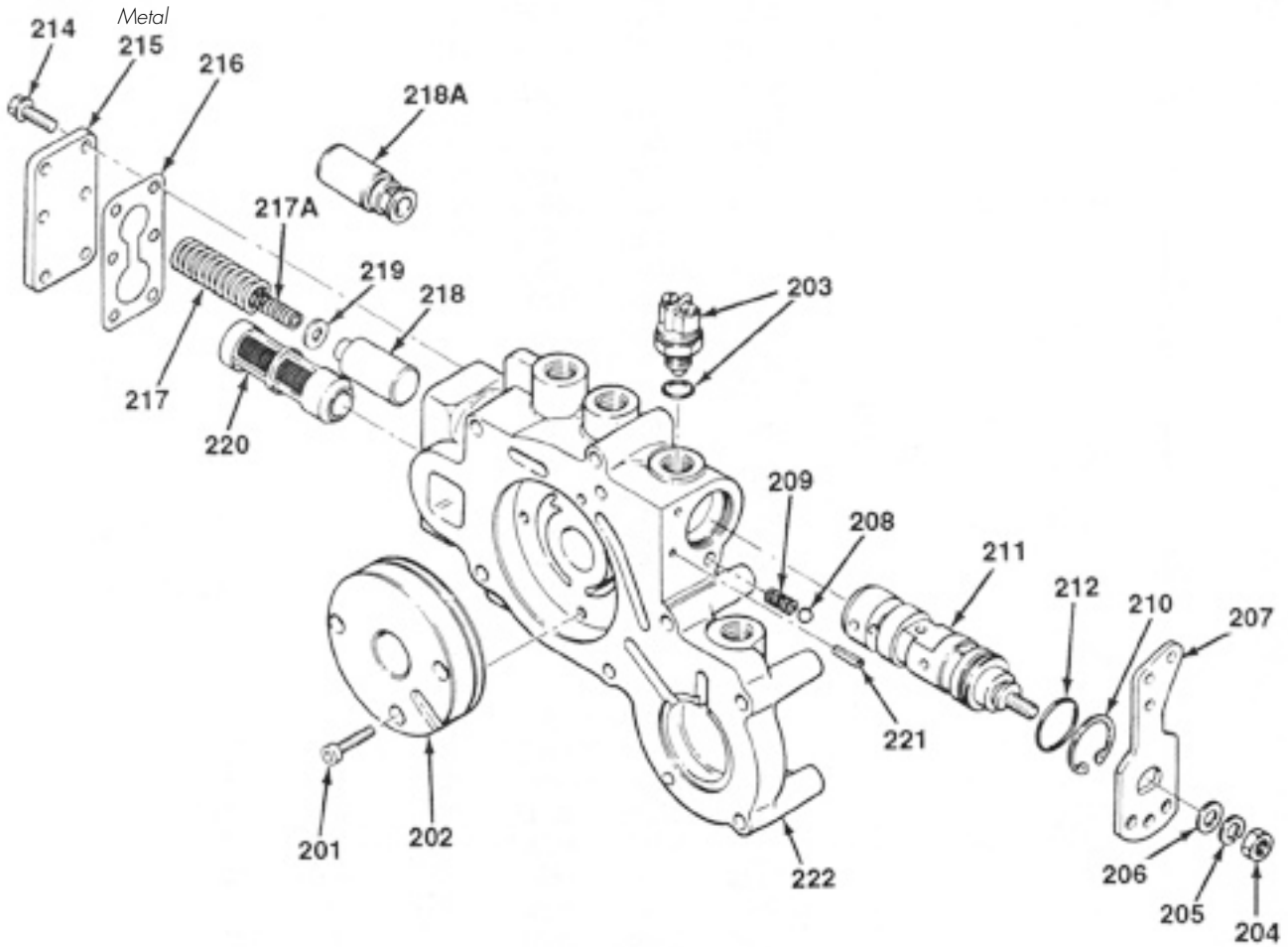
### 5000 Series V-Drive Breakdown



### 5000 SERIES V-DRIVE VALVE & PUMP BREAKDOWN

Part Number Breakdown - pg. 241

TRANSMISSIONS & V-DRIVES





### 5000 SERIES V-DRIVE VALVE & PUMP BREAKDOWN

Diagram Number	P/N	Description	Qty.
201	W2000-141501	O-Ring	1
202	W1000-183087	Bolt, Pump	3
203	W2001-508001	Pump, Crest.	1
204	W1000-640004	Neutral Switch & O-Ring	1
205	W11505919	Nut	1
206	W120214	Washer, Lock	1
207	W120393	Washer, Plain	1
208	W2001-098001	Lever, Control	1
209	W453632	Ball, Detent	1
210	W71-42	Spring, Detent Ball	1
211	W1000-139071	Snap Ring	1
212	W2001-139001	Valve Assembly	1
213	W1000-141123	O-Ring	1
214	W1000-183090	Bolt	6
215	W2001-039001	Cover Plate, Metal	1
216	W2001-045003	Gasket, Cover Plate	1
217	W2001-156004	Spring (small diameter)	1
218	W74-242	Spring	1
219	W2001-124004	Piston	1
220	W2000-141502	O-Ring	2
221	W1000-053024	Spacer, Piston Spring	1
222	W2001-238001	Screen, Oil	1
223	W9422127	Pin, Lever Stop	1
224	N/A	Valve & Pump Housing	N/A