

## Quick Specs

Max. Output at Crankshaft	75 mhp / 3,200 rpm
Total Displacement	1.995 L
Configuration	4-stroke cycle
Cylinders	4
Engine Weight	456 lbs



## 4JH4-TE

4 valves per cylinder make for better fuel/air mixture, delivering more power and lower emissions

Cast aluminum oil pan increases durability and provides for improved heat dissipation

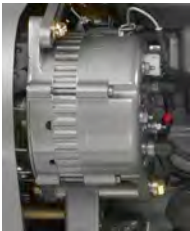
Belt safety guard provides complete protection from belts and moving components

High quality two-part urethane paint protects surfaces from rust

## Legendary Reliability. Compact. Light Weight.

Yanmar engines are designed for high performance and maximum engine life.

Tested under the most extreme conditions, you can always count on them to deliver the power you need day in and day out, year after year. It's simply the best power package available for new vessels and re-power applications.



### 80A Alternator

Once an option, and now standard, it helps deliver maximum power for the cruising boater's needs.



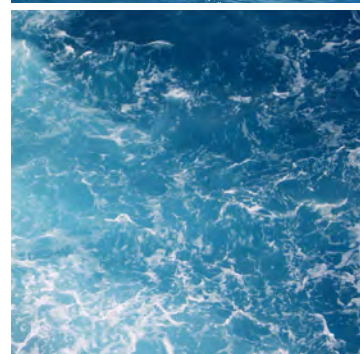
### Sailandrive Option

A popular feature for those interested in reducing drag and increasing performance.



### Convenient Service Points

Makes it easy to perform routine maintenance or handle unexpected repairs.



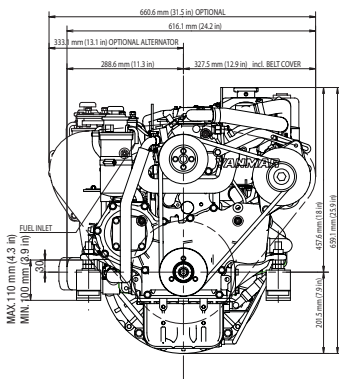
# 4JH4-TE

# specifications

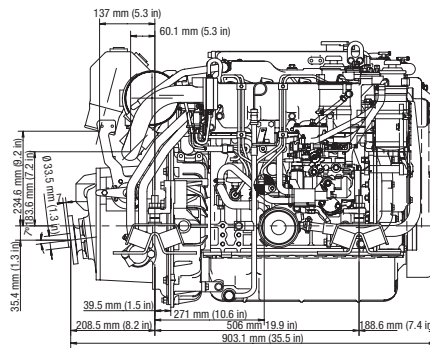
Configuration	4-stroke, 4 cylinder, 4 valves per cylinder, vertical, water cooled diesel engine
Maximum output at crankshaft	75 mhp (55.2 kW) / 3200 rpm
Continuous rating output at crankshaft	68 mhp (50.2 kW) / 3100 rpm
Displacement	1.995 L (121.7 cu in)
Bore x stroke	3.31 in x 3.54 in (84 mm x 90 mm)
Aspiration	Turbocharged with intercooler
Alternator	12 V - 80 A
Cooling system	Fresh water cooling by centrifugal water pump and rubber impeller sea water pump
Direction of rotation (crankshaft)	Counter clockwise viewed from stern
Dry weight without gear	456 Lbs (207 kg)
Environmental Certification	EMC compliant, meets the comprehensive emissions regulations introduced in EU and US
Engine mounting	Flexible type isolators

NOTE: Fuel condition: Density at 15°C = 0.84 g/cm<sup>3</sup>; 1kW = 1.3596 mhp = 1.3410 HP  
 \* Fuel temperature 40°C at the inlet of the fuel injection pump (ISO 8665)  
 Technical data is according to ISO 8665 / 3046

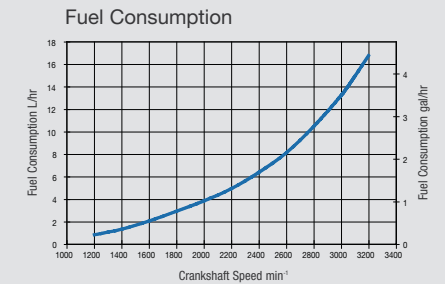
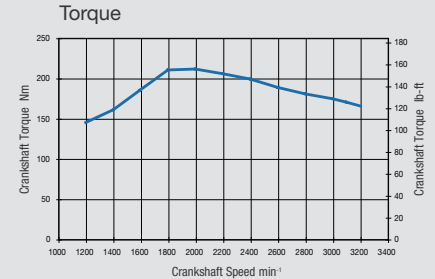
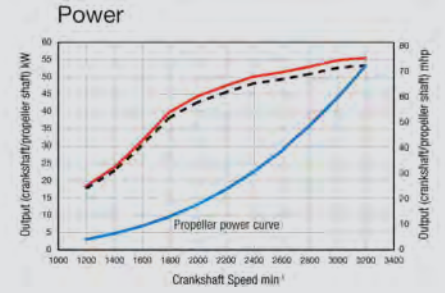
## Rear View



## Right Side View



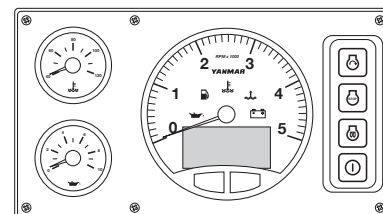
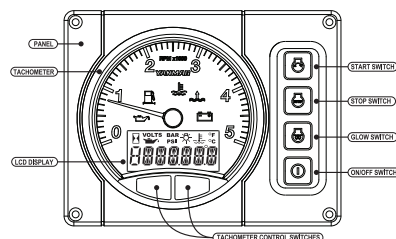
## PERFORMANCE CURVES



## Marine Gears/Drive

Model	ZF30M		KM4A2 down angle:7			KM4A down angle: 8		ZF25A down angle: 8		Saildrive SD50
Type	Mechanical multi disc		Mechanical wet cone clutch			Hydraulic, wet multi-disc		Hydraulic, wet multi-disc		Mechanical wet cone clutch
Dry weight	28 kg (61 lbs)		30 kg (66 lbs)			31 kg (68 lbs)		30 kg (66 lbs)		42 kg (92 lbs)
Reduction ratio (fwd/asn)	2.15/2.64	2.70/2.64	1.47/1.47	2.14/2.14	2.63/2.63	2.04/2.04	2.45/2.45	1.93/1.93	2.48/2.48	2.32/2.32
Propeller speed(fwd/asn)	1444/1176	1150/1176	2115/2113	1451/1450	1180/1179	1520/1520	1263/1263	1607/1607	1250/1250	1337/1337
Direction of rotation (propeller shaft - fwd)	Clockwise viewed from stern		Clockwise or counterclockwise viewed from stern			Clockwise or counterclockwise viewed from stern		Clockwise & counter clockwise viewed from stern		Clockwise & counter clockwise viewed from stern
Dry weight engine and gear/drive	235 kg (518 lbs)		237 kg (522 lbs)			238 kg (524 lbs)		237 kg (522 lbs)		249 kg (549 lbs)
Length engine and gear/drive	923 mm (36.3 in)		903 mm (35.6 in)			933 mm (36.7 in)		1017 mm (40 in)		782 mm (30.8 in)

## Instrument Panels B and C (Optional)



WWW.US.YANMAR.COM