



PARTS CATALOG

Published

2008/7 (Jul.)

0CR10-G51501

Introduction

1. This parts catalog contains the previous information on the 6LY2-STE as well as the new one on the 6LY2A-STP.

	Parts catalog No.	Date of issue	Remarks
First edition	000Y00R5150	Apr., 2000	No need
1st edition (supplement)	000Y00R5151	Oct., 2001	

2. Standard finish color. Yanmar e cole silver metallic

Parts No.	977620-10070	1L (Packed in a can)
Parts No.	977620-40070	4L (Packed in a can)
Parts No.	TOR-90090003	Spray (1 piece)

3. This parts catalog does not contain the technical data needed for maintenance service.

4. The illustrations used in this parts catalog have been simplified for clarity.

5. Specification

Model	6LY2-STE	6LY2A-STP
Type	4-stroke, vertical, water-cooled, diesel engine	
No. of cylinder - Bore (mm) x Stroke (mm)	6 - 105.9 x 110	
Continuous rating kW/min ⁻¹ (PS/rpm)	257/3100 (350/3100)	
Combustion system	Direct injection	
Starting system	Electric starting 12V-3.0kW	
Power take-off position	Flywheel side	
Lubricating system	Forced lubrication	

6. The contents of this parts catalog are subject to change without notice.

7. Be sure to use only Yanmar genuine part for repairs. If imitation parts are used, it may cause engine defects.

CONTENTS

MODEL : 6LY2(A)-STE(P)

PC NO : 0CR10-G51501

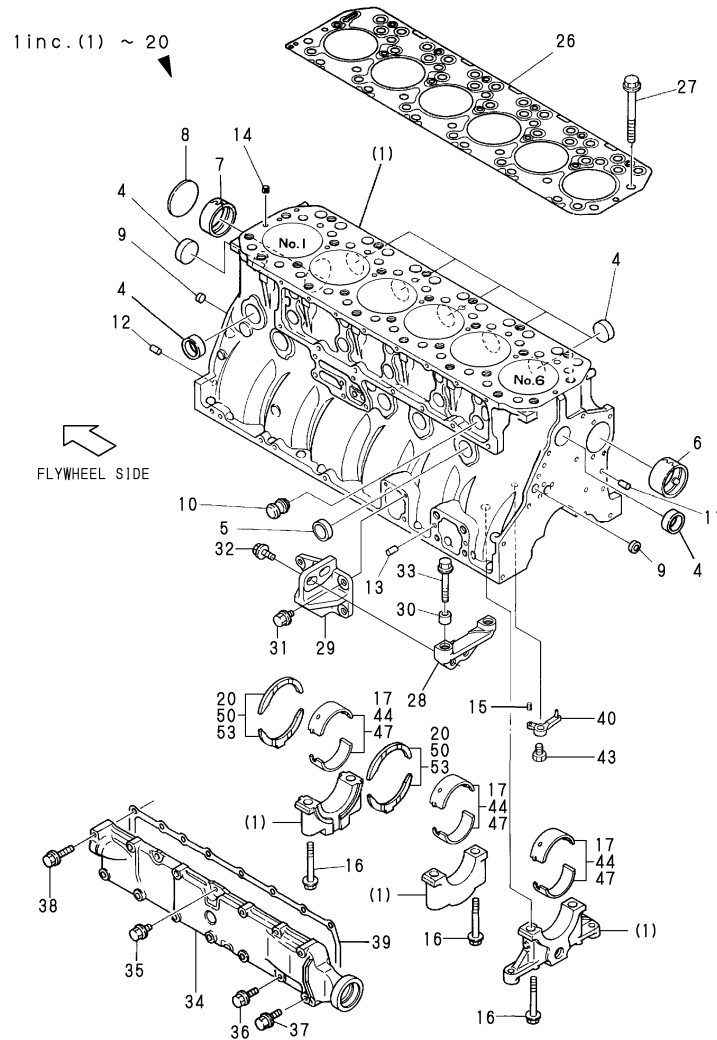
Fig.No.	GROUP NAME
6LY2(A)-STE(P)	
1.	CYLINDER BLOCK
2.	GEAR HOUSING
3.	FLYWHEEL HOUSING
4.	LUB.OIL SUMP
5.	MOUNTING FOOT
6.	LABEL
7.	CYLINDER HEAD
8.	BONNET & BREATHER
9.	SUCTION MANIFOLD
10.	EXHAUST MANIFOLD
11.	TURBOCHAGER
12.	AIR COOLER
13.	CAMSHAFT & DRIVING GEAR
14.	CRANKSHAFT & FLYWHEEL
15.	PISTON & CONNECTING ROD
16.	LUB.OIL COOLER & LUB.OIL STRAINER
17.	LUB.OIL PUMP & LUB.OIL PIPE
18.	LUB.OIL PIPE(TURBOCHAGER)
19.	OIL SUCTION/DRAIN PUMP
20.	BILGE PUMP(STD,OPTIONAL)
21.	BILGE PUMP(DX,OPTIONAL)
22.	COOLING SEA WATER PUMP
23.	COOLING FRESH WATER PUMP
24.	COOLING FRESH WATER COOLER
25.	COOLING SEA WATER PIPE
26.	COOLING FRESH WATER PIPE
27.	FUEL INJECTION PUMP
28.	GOVERNOR
29.	FUEL FEED PUMP

Fig.No.	GROUP NAME
30.	TIMER
31.	F.I.VALVE & F.I.PIPE
32.	FUEL PIPE & FUEL STRAINER
33.	OIL/WATER SEPARATER(OPTIONAL)
34.	ENGINE STOP DEVICE
35.	CLUTCH
36.	STARTING MOTOR
37.	GENERATOR
38.	WIRE HARNESS & SENSOR
39.	INSTRUMENT PANEL(B-TYPE)
40.	INSTRUMENT PANEL(C-TYPE)
41.	INSTRUMENT PANEL(D-TYPE)
42.	TOOL
43.	REMOTE LUB.OIL STRAINER(OPTIONAL)

Fig.1. CYLINDER BLOCK

P/C NEWS No.:Y00R5151-3
PUBLISHED:2003/7

Fig. 1 シリンダブロック
CYLINDER BLOCK



Remarks
 (1)UNDER SIZED(U.S.=0.25)PART.
 (2)UNDER SIZED(U.S.=0.50)PART.
 (3)OVER SIZED(O.S.=0.25)PART.
 (4)OVER SIZED(O.S.=0.50)PART.
 (5)U.S.(1.00) CANNOT BE SOLD.
 (6)O.S.(1.00) CANNOT BE SOLD.
 (M)MISPRINT:REFER TO THE NEXT ITEM.

(A)=6LY2(A-STE(P
(B)=
(C)=

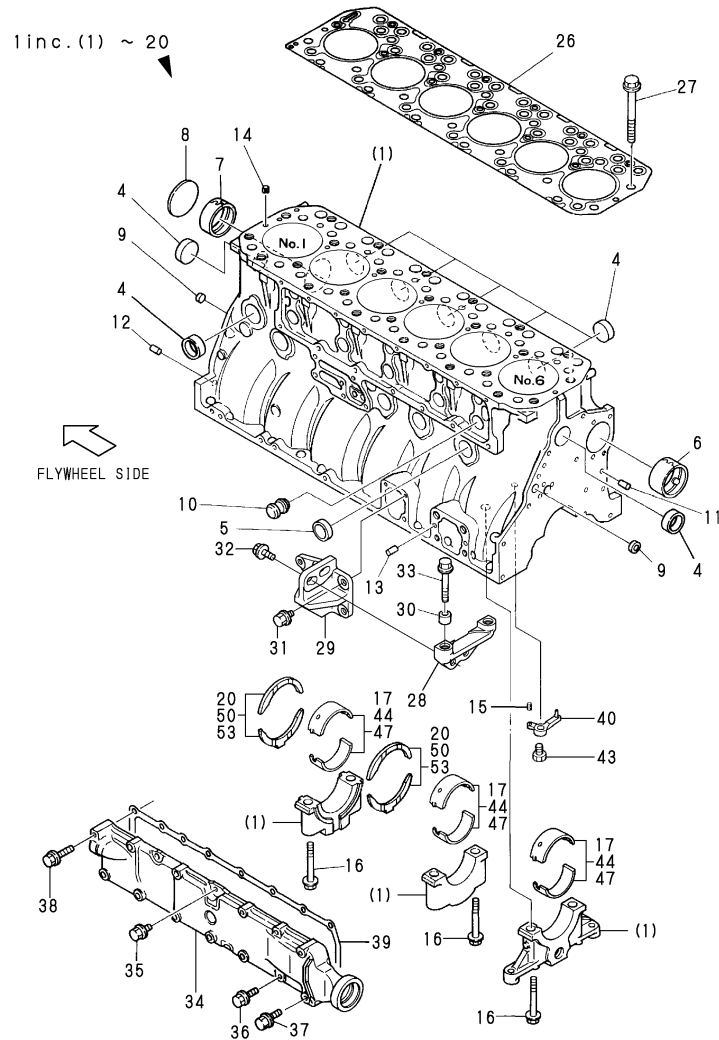
(D)=
(E)=
(F)=

REF.	LEV.	PARTS NO.	DESCRIPTION	QTY						I	R
				(A)	(B)	(C)	(D)	(E)	(F)		
1	1	719575-01560	CYLINDER BLOCK ASSY	1							
4	3	119593-01870	PLUG,CUP	8							
4-1	3	119885-01990	PLUG 40	8							N
(A=E/#50595)											
5	3	119593-01880	PLUG	4							
5-1	3	119285-11990	PLUG 35	4							N
(A=E/#50595)											
6	3	119000-02410	BUSH, CAMSHAFT	1							
7	3	119593-02420	BUSH, CAMSHAFT	3							
8	3	27231-650000	PLUG 65	1							
9	3	27241-160000	PLUG 16	2							
10	2	119000-01840	PLUG 25,RUBBER	5							
11	2	129100-01580	PARALLEL PIN 8X16	2							
12	2	129100-01580	PARALLEL PIN 8X16	2							
13	2	129100-01580	PARALLEL PIN 8X16	4							
14	2	22351-080016	SPRING PIN 8X16	2							
15	2	22351-040010	SPRING PIN 4X10	6							
16	2	119593-02070	BOLT	14							
17	2	719593-02800	MAIN METAL ASSY	7							
20	2	719593-02590	METAL COMPL, TARUST	2							
26	1	119595-01350	GASKET T=1.3	1							
27	1	119593-01200	BOLT	26							
28	1	119593-01801	RETAINER	1							
29	1	119593-01811	RETAINER	1							
30	1	124411-28400	PIN	2							
31	1	26106-080162	BOLT M 8X 16 PLATED	2							
32	1	26106-080202	BOLT M 8X 20 PLATED	2							
33	1	26106-100802	BOLT M10X 80 PLATED	2							
34	1	119593-01751	COVER	1							
35	1	26106-080182	BOLT M 8X 18 PLATED	2							
36	1	26106-080302	BOLT M 8X 30 PLATED	10							
37	1	26106-080452	BOLT M 8X 45 PLATED	2							
38	1	26106-080502	BOLT M 8X 50 PLATED	1							
39	1	119593-01760	GASKET	1							
40	1	119593-39560	NOZZLE	6							
43	1	119595-39580	BOLT,BJ	6							
I	44	1	119593-02120	MAIN METAL ASSY U.25	7						W M
(A=*1999.12)											
I	44-1	1	119593-02120	MAIN METAL ASSY U.50	7						W 2
(A=FROM 1ST)											
I	44A	1	119593-02500	METAL ASSY,0.25 US	7						W 1
(A=FROM 1ST)											
I	47	1	119593-02130	MAIN METAL ASSY 0.50	7						W M
(A=*1999.12)											
I	47-1	1	119593-02130	MAIN METAL ASSY 1.00	7						W 5
(A=FROM 1ST)											
I	50	1	119593-02170	THRUST METAL ASSY	2						W M
(A=*1999.12)											
I	50-1	1	119593-02170	THRUST METAL US0.50	2						W 4
(A=FROM 1ST)											
I	50A	1	119593-02600	METAL,THRUST 0.25US	2						W 3

Fig.1. CYLINDER BLOCK

P/C NEWS No.:Y00R5151-3
PUBLISHED:2003/7

Fig. 1 シリンダブロック
CYLINDER BLOCK



- Remarks
- (1)UNDER SIZED(U.S.=0.25)PART.
 - (2)UNDER SIZED(U.S.=0.50)PART.
 - (3)OVER SIZED(O.S.=0.25)PART.
 - (4)OVER SIZED(O.S.=0.50)PART.
 - (5)U.S.(1.00) CANNOT BE SOLD.
 - (6)O.S.(1.00) CANNOT BE SOLD.
 - (M)MISPRINT:REFER TO THE NEXT ITEM.

OCR10-G51501 1. CYLINDER BLOCK

(A)=6LY2(A-STE(P
(B)=
(C)=

(D)=
(E)=
(F)=

REF.	LEV.	PARTS NO.	DESCRIPTION	QTY						I	R	
				(A)	(B)	(C)	(D)	(E)	(F)			
		(A=FROM 1ST)										
I	53	1 119593-02180	THRUST METAL 0.50	2							W	M
		(A=*1999.12)										
I	53-1	1 119593-02180	THRUST METAL 1.00	2							W	6
		(A=FROM 1ST)										

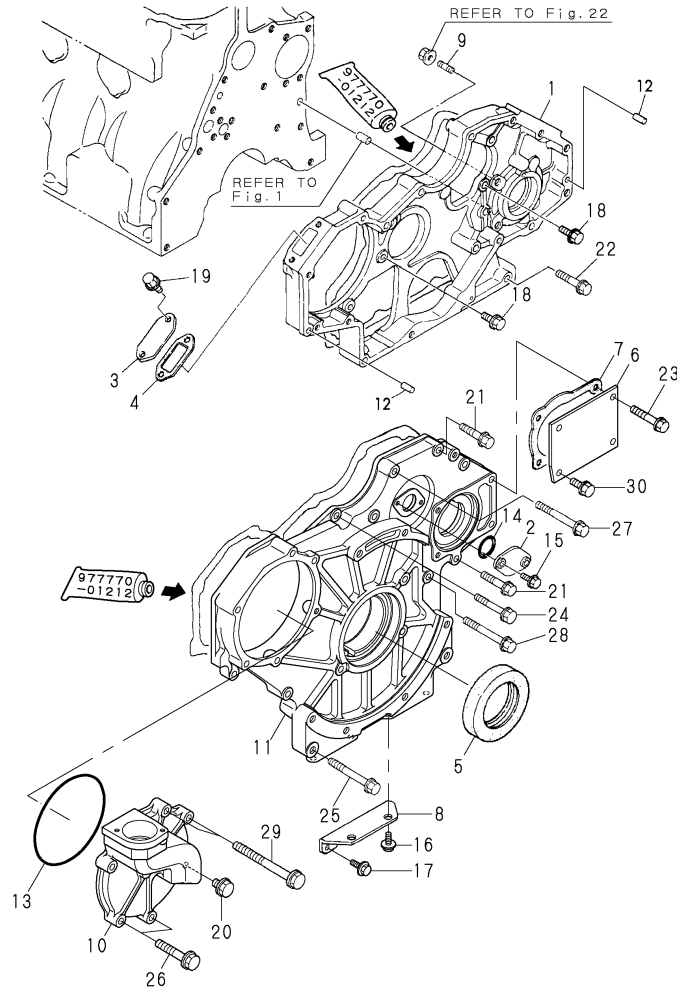
Fig.2. GEAR HOUSING

(A)=6LY2(A-STE(P
(B)=
(C)=

(D)=
(E)=
(F)=

Y00R5151

Fig. 2 GEAR HOUSING



REF.	LEV.	PARTS NO.	DESCRIPTION	QTY						I	R
				(A)	(B)	(C)	(D)	(E)	(F)		
1	1	119595-01510	GEAR CASE	1							
2	1	121023-01550	COVER, BLIND	1							
3	1	119000-01740	COVER	1							
4	1	119000-01771	GASKET, (NON ASB.)	1							
5	1	119595-01800	OIL SEAL TC8010513	1							
6	1	124610-01851	COVER	1							
7	1	124610-01862	GASKET, (NON-ASB.)	1							
8	1	119593-01911	BRANCKET	1							
9	1	121850-01920	STUD M 8X 22	2							
10	1	119595-01930	COVER	1							
11	1	119595-01950	COVER, GEAR CASE	1							
12	1	22312-080160	PARALLEL PIN 8X 16	2							
13	1	24321-001250	O-RING 1A G-125.0	1							
14	1	24341-000240	O-RING 1A S-24.0	1							
15	1	26106-060182	BOLT M 6X 18 PLATED	2							
16	1	26106-080122	BOLT M 8X 12 PLATED	2							
17	1	26106-080162	BOLT M 8X 16 PLATED	2							
18	1	26106-080202	BOLT M 8X 20 PLATED	5							
19	1	26106-080202	BOLT M 8X 20 PLATED	2							
20	1	26106-080202	BOLT M 8X 20 PLATED	1							
21	1	26106-080452	BOLT M 8X 45 PLATED	3							
22	1	26106-080452	BOLT M 8X 45 PLATED	1							
23	1	26106-080502	BOLT M 8X 50 PLATED	2							
24	1	26106-080552	BOLT M 8X 55 PLATED	3							
25	1	26106-080752	BOLT M 8X 75 PLATED	2							
26	1	26106-080752	BOLT M 8X 75 PLATED	2							
27	1	26106-080852	BOLT M 8X 85 PLATED	1							
28	1	26106-080902	BOLT M 8X 90 PLATED	1							
29	1	26106-081202	BOLT M 8X120 PLATED	2							
30	1	26106-080202	BOLT M 8X 20 PLATED	2							

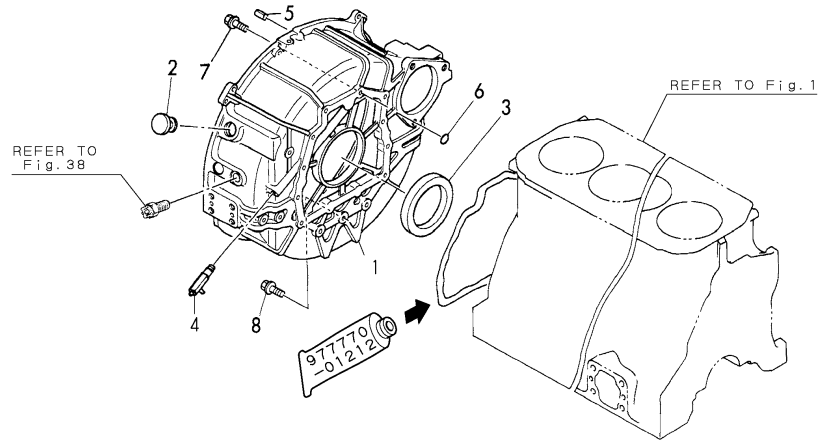
Fig.3. FLYWHEEL HOUSING

(A)=6LY2(A-STE(P
(B)=
(C)=

(D)=
(E)=
(F)=

Y00R5151

Fig. **3** FLYWHEEL HOUSING



REF.	LEV.	PARTS NO.	DESCRIPTION	Q'TY						I	R
				(A)	(B)	(C)	(D)	(E)	(F)		
1	1	119593-01601	HOUSING, FLYWHEEL	1							
2	1	119620-01750	CAP, FLYWHEEL COVER	1							
3	1	124411-01780	SEAL HTC95,115,12	1							
4	1	128371-01800	COCK ASSY 1/4	1							
5	1	22312-100220	PARALLEL PIN 10X22	1							
6	1	24311-000140	O-RING 1A P-14.0	1							
7	1	26106-100302	BOLT M10X 30 PLATED	8							
8	1	26106-100352	BOLT M10X 35 PLATED	5							

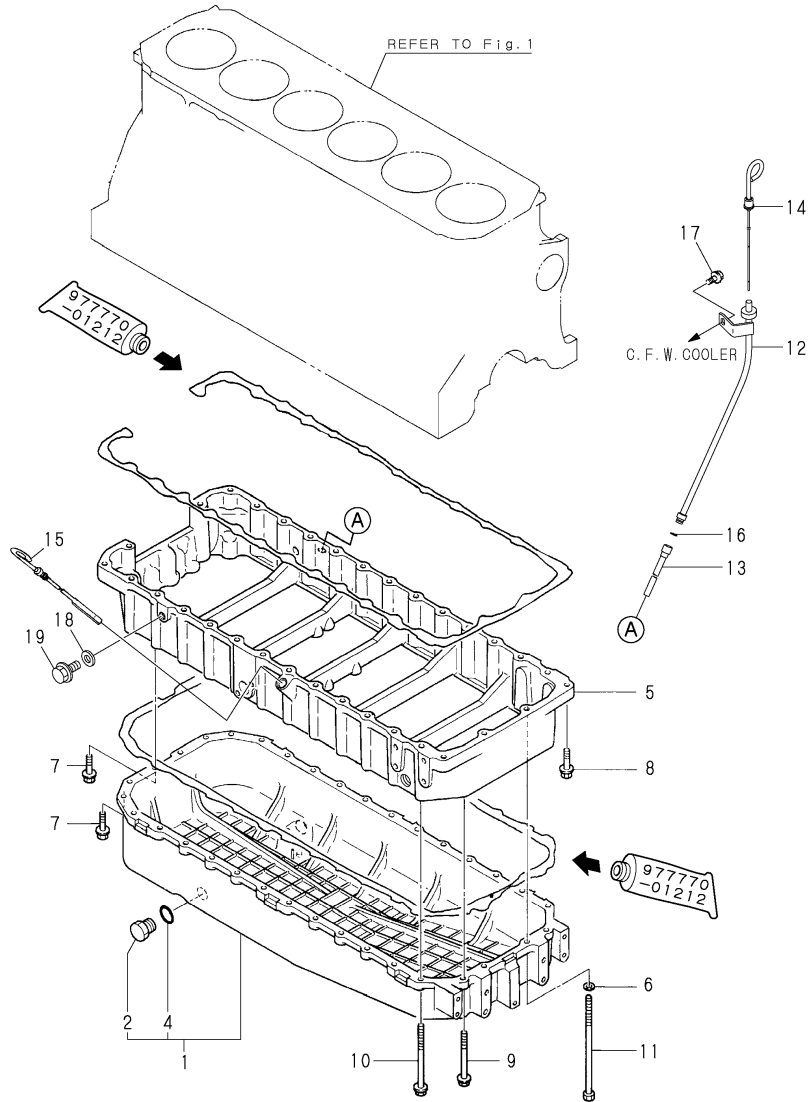
Fig.4. LUB.OIL SUMP

(A)=6LY2(A-STE(P
(B)=
(C)=

(D)=
(E)=
(F)=

Y00R5151

Fig.4 LUB.OIL SUMP

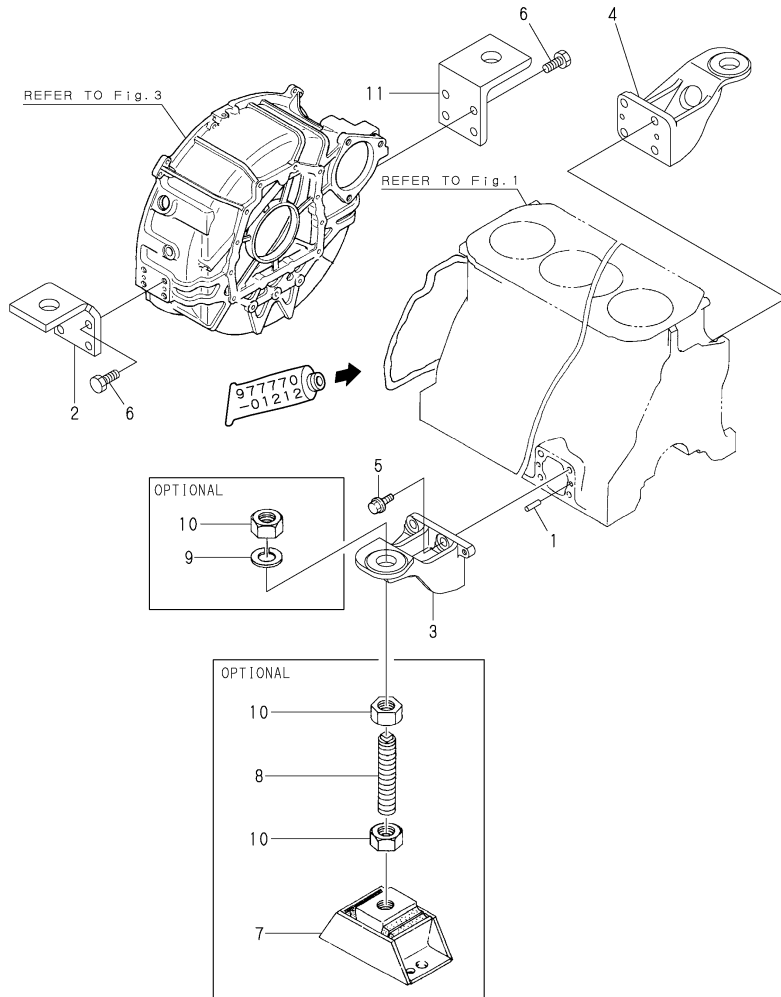


REF.	LEV.	PARTS NO.	DESCRIPTION	Q'TY						I	R
				(A)	(B)	(C)	(D)	(E)	(F)		
1	1	719573-01540	SUMP ASSY, LUB. OIL	1							
2	2	171301-01640	PLUG M22	1							
4	2	24341-000240	O-RING 1A S-24.0	1							
5	1	119593-01731	INTERMEDIATE, SUMP	1							
6	1	22137-080000	WASHER 8, POLISHED	2							
7	1	26106-080252	BOLT M 8X 25 PLATED	4							
8	1	26106-080352	BOLT M 8X 35 PLATED	4							
9	1	26106-080902	BOLT M 8X 90 PLATED	2							
10	1	26106-081202	BOLT M 8X120 PLATED	26							
11	1	26116-081902	BOLT M 8X190 PLATED	2							
12	1	119574-34810	PIPE, DIPSTICK	1							
13	1	119171-34820	PIPE, DIPSTICK	1							
14	1	119574-34861	DIPSTICK, LUB. OIL	1							
15	1	119593-34870	DIPSTICK, LUB. OIL	1							
16	1	24341-000100	O-RING 1A S-10.0	1							
17	1	26106-080162	BOLT M 8X 16 PLATED	1							
18	1	23414-100000	GASKET 10, ROUND	1							
19	1	26106-100162	BOLT M10X 16 PLATED	1							

Fig.5. MOUNTING FOOT

Y00R5151

Fig.5 ENGINE BRACKET



OCR10-G51501 5. MOUNTING FOOT

(A)=6LY2(A-STE(P
(B)=
(C)=

(D)=
(E)=
(F)=

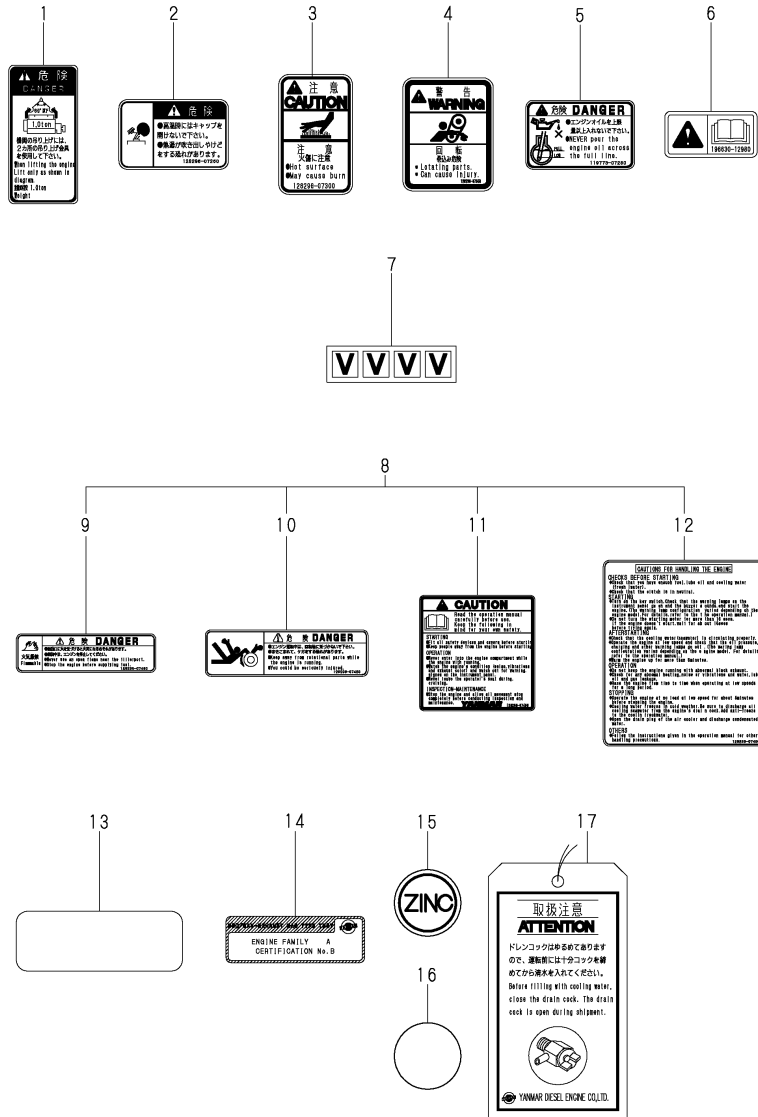
REF.	LEV.	PARTS NO.	DESCRIPTION	Q'TY						I	R
				(A)	(B)	(C)	(D)	(E)	(F)		
1	1	129100-01580	PARALLEL PIN 8X16	4							
2	1	119574-08230	BRACKET, ENGINE	1							
3	1	119574-08200	BRACKET	1							
4	1	119574-08210	BRACKET	1							
5	1	26116-120282	BOLT M12X 28 PLATED	8							
6	1	26116-120322	BOLT M12X 32 PLATED	8							
7	1	127495-08320	MAUNT,RUBBER	4							1
8	1	119593-08400	BOLT	4							1
9	1	22217-270000	SPRING WASHER 27	4							1
10	1	26776-270002	LOCK NUT M27 PLATED	12							1
11	1	119573-08200	BRACKET	1							

Remarks
(1)OPTIONAL

Fig.6. LABEL

Y00R5151

Fig.6 LABEL



(A)=6LY2(A-STE(P
(B)=
(C)=

(D)=
(E)=
(F)=

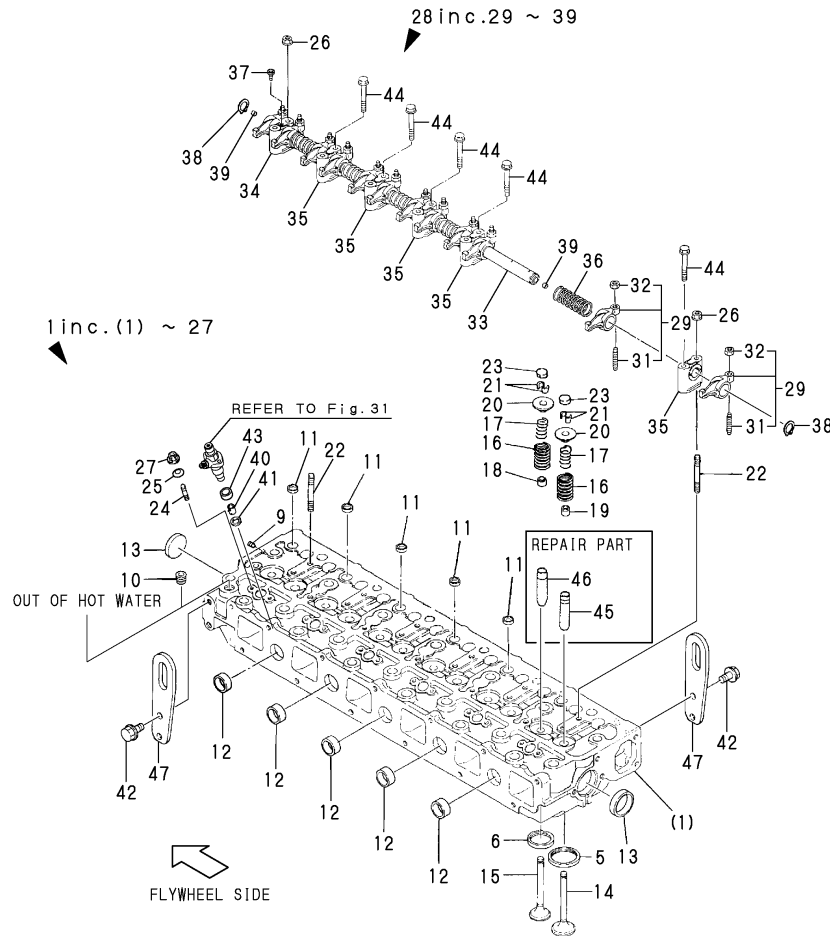
REF.	LEV.	PARTS NO.	DESCRIPTION	QTY						I	R
				(A)	(B)	(C)	(D)	(E)	(F)		
1	1	120324-07240	LABEL, LIFTER	1							
2	1	128296-07260	LABEL,DANGER	1							
3	1	128296-07300	LABEL,DANGER	2							
4	1	128296-07350	LABEL	1							
5	1	119773-07280	LABEL,DANGER	1							
6	1	196630-12980	LABEL	1							
7	1	119574-07450	LABEL	1							
8	1	128296-07190	LABEL,LOOSE PARTS	1							
9	2	128296-07400	LABEL,DANGER	2							
10	2	128296-07420	LABEL,DANGER	1							
11	2	128296-07450	LABEL,DANGER	1							
12	2	128296-07460	LABEL,DANGER	1							
13	1	128171-07150	LABEL	1							
14	1	119575-07510	LABEL, BSO	1							
15	1	119574-07400	LABEL	5							
16	1	119595-07360	LABEL	1							
17	1	123682-07851	LABEL, CW. TANK	1							

Fig.7. CYLINDER HEAD

(A)=6LY2-STE
(B)=6LY2A-STP
(C)=

(D)=
(E)=
(F)=

P/C NEWS No:Y00R5151-8
PUBLISHED:2007/2

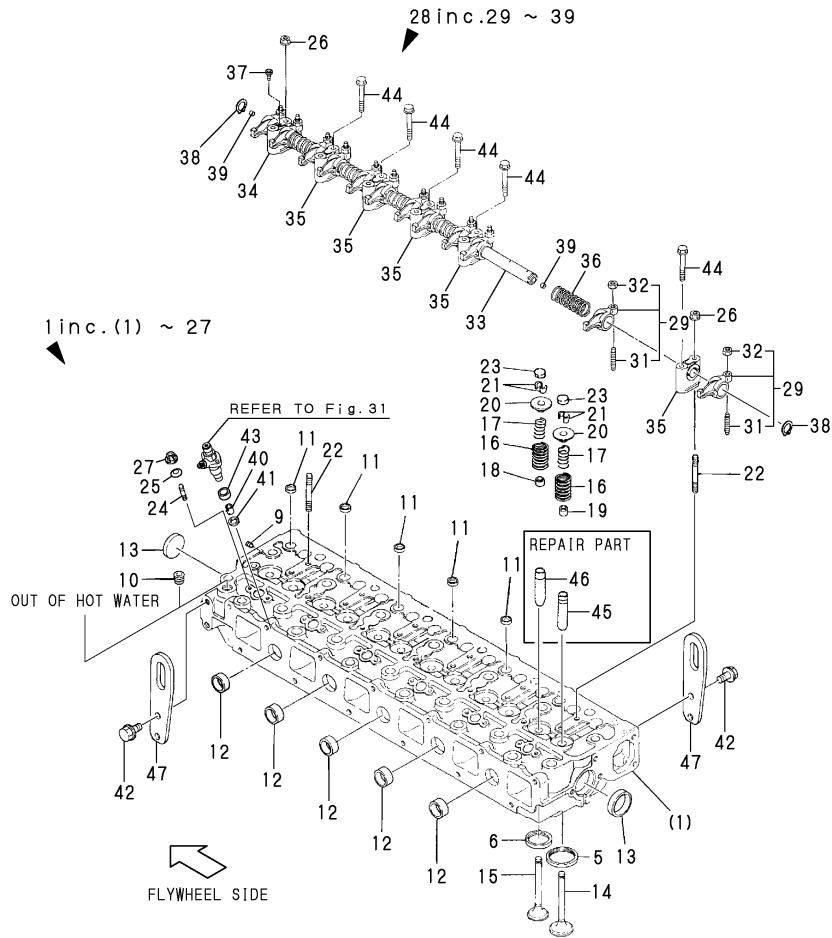


REF.	LEV.	PARTS NO.	DESCRIPTION	Q'TY						I	R
				(A)	(B)	(C)	(D)	(E)	(F)		
1	1	719595-11700	HEAD ASSY,CYLINDER	1	1						
I	1-1	719595-11701	HEAD ASSY,CYLINDER	1	1						N
		(A=*2003.04) (B=*2003.04)									
I	1-2	719575-11701	HEAD ASSY,CYLINDER		1						N 2
		(B=*2005.09)									
5	3	119173-11080	INSERT, INTAKE	6	6						
6	3	119173-11090	INSERT, EXHAUST	6	6						
6-1	3	119173-11091	SEAT, VALVE	6	6						N
		(A=*2003.04) (B=*2003.04)									
9	3	23876-005000	PLUG PT 1/16,SCREW	1	1						
10	3	23876-030000	PLUG PT3/8,SCREW	1	1						
11	3	119593-01860	PLUG	6	6						
12	3	27241-280000	PLUG 28	5	5						
13	3	27241-400000	PLUG 40	2	2						
14	2	119173-11101	VALVE, SUCTION	6	6						
I	14-1	119575-11100	VALVE, SUCTION		6						N 2
		(B=*2005.09)									
15	2	119593-11110	VALVE, EXHAUST	6	6						
16	2	124617-11120	SPRING (A), VALVE	12	12						
17	2	124617-11130	SPRING (B), VALVE	12	12						
18	2	119171-11150	SEAL, VALVE STEM	6	6						
19	2	121850-11150	SEAL, VALVE STEM	6	6						
20	2	119595-11180	RETAINER, SPRING	12	12						
21	2	27310-090001	COTTER 9	12	12						
22	2	119593-11300	BOLT 8X80	4	4						
22-1	2	119593-11301	BOLT 8X80	4	4						R
		(A=*2003.05) (B=*2003.05)									
23	2	119595-11370	CAP, VALVE	12	12						
24	2	119595-11910	BOLT	12	12						
25	2	119595-11920	WASHER	12	12						
26	2	26366-080002	NUT M 8	4	4						
26-1	2	26306-080002	NUT	4	4						N
		(A=*2001.06) (B=*2001.06)									
27	2	26366-080002	NUT M 8	12	12						
27-1	2	26306-080002	NUT	12	12						N
		(A=*2001.06) (B=*2001.06)									
28	1	119593-11240	SHAFT, ROCKER ARM	1	1						
29	2	719593-11650	ARM,VALVE ROCKER	12	12						
31	3	119000-11230	SCREW, VALVE	12	12						
32	3	129150-11750	NUT M8XP1.0	12	12						
33	2	119593-11250	SHAFT,ROCKER ARM	1	1						
34	2	119000-11260	BRACKET (A)	1	1						
35	2	119000-11270	BRACKET (B)	5	5						
36	2	119000-11280	SPRING	5	5						
37	2	119000-11290	BOLT, SET	1	1						
38	2	22242-000180	CIRCLIP 18	2	2						
39	2	27241-100000	PLUG 10	2	2						
40	1	120324-11900	INSULATOR	6	6						
I	40-1	119575-11900	INSULATOR		6						S 2
		(B=*2001.11)									
41	1	120324-11910	GASKET	6	6						

Remarks
(1)REPAIR PART
(2)EXCLUSIVE USE PART FOR 6LY2A-STP.

Fig.7. CYLINDER HEAD

P/C NEWS No:Y00R5151-8
PUBLISHED:2007/2



(A)=6LY2-STE
(B)=6LY2A-STP
(C)=

(D)=
(E)=
(F)=

REF.	LEV.	PARTS NO.	DESCRIPTION	Q'TY						I	R	
				(A)	(B)	(C)	(D)	(E)	(F)			
I	41-1	1	119575-11910 GASKET (B=*2001.11)		6						S	2
	42	1	26106-100202 BOLT M10X 20 PLATED		4	4						
	43	1	119595-11930 SEAL,NOZZLE		6	6						
I	43-1	1	119575-11930 SEAL,NOZZLE (B=*2001.11)		6						S	2
	44	1	26106-080652 BOLT M 8X 65 PLATED		8	8						
	45	1	121850-11800 GUIDE, VALVE(SUCTION)		6	6						1
	46	1	119000-11180 GUIDE, VALVE		6	6						1
	47	1	119593-07200 LIFTER, ENGINE		2	2						

Remarks
(1)REPAIR PART
(2)EXCLUSIVE USE PART FOR 6LY2A-STP.

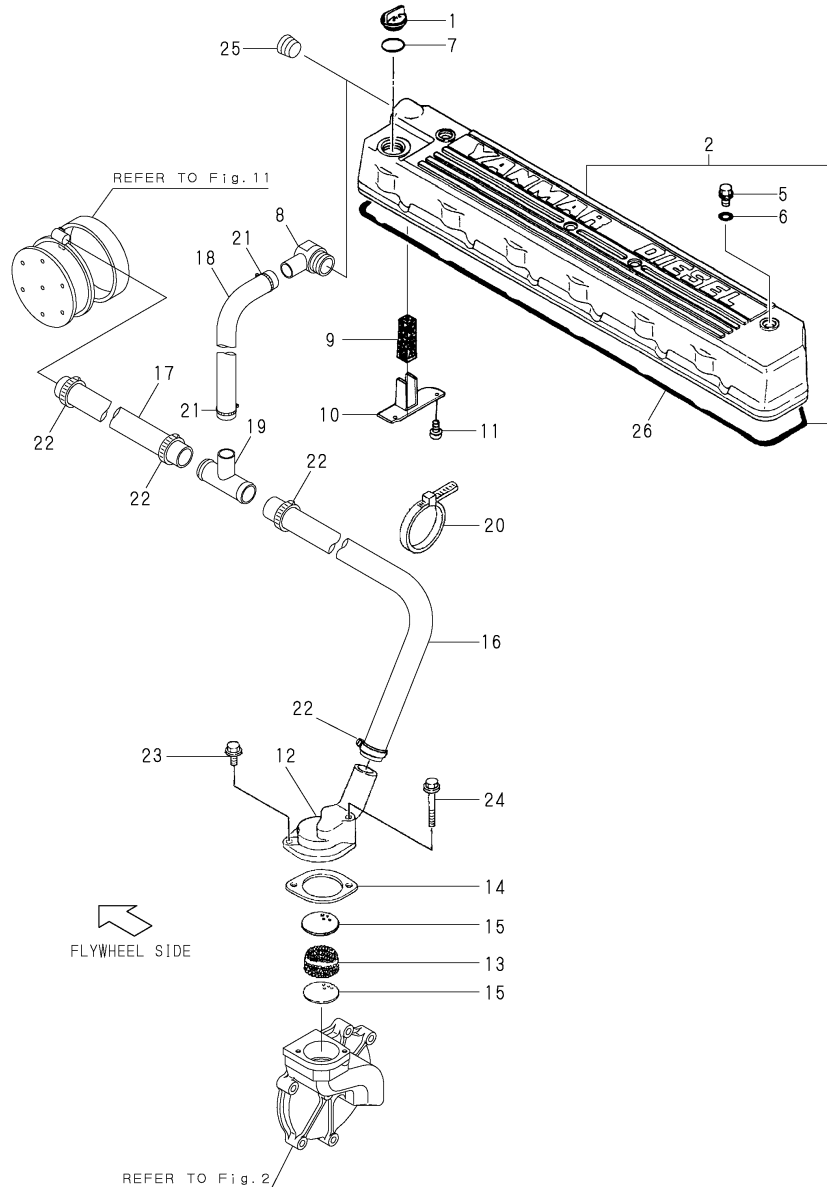
Fig.8. BONNET & BREATHER

(A)=6LY2(A-STE(P
(B)=
(C)=

(D)=
(E)=
(F)=

Y00R5151

Fig. 8 BONNET & BREATHER



REF.	LEV.	PARTS NO.	DESCRIPTION	QTY						I	R
				(A)	(B)	(C)	(D)	(E)	(F)		
1	1	124160-01751	CAP, LUB.OIL SUPPLY	1							
2	1	119588-11310	COVER,BONNET	1							
5	1	124160-11360	KNOB	4							
6	1	24311-000120	O-RING 1A P 12.0	4							
7	1	24311-000320	O-RING 1A P-32.0	1							
8	1	119593-49320	JOINT	1							
9	1	119593-03100	FILTER(BREATHER	1							
10	1	119593-03200	COVER,BREATHER CHMBR	1							
11	1	26022-050122	SCREW M 5X 12	2							
12	1	119173-03030	COVER	1							
13	1	121850-03050	NET	1							
14	1	124411-03051	GASKET, (NON-ASB.)	1							
15	1	121750-03080	PLATE, BAFFLE	2							
16	1	119593-03093	PIPE	1							
17	1	119593-03120	HOSE	1							
I 17-1	1	119574-03120	HOSE	1							R
		(A=E/#50279)									
18	1	119593-03130	HOSE	1							
I 18-1	1	119574-03130	HOSE	1							R
		(A=E/#50279)									
19	1	119593-03140	JOINT,BREATHER	1							
20	1	194250-51660	BAND 250	2							
21	1	23000-028000	CLAMP 28	2							
22	1	23000-035000	CLAMP 35	4							
23	1	26106-060202	BOLT M 6X 20 PLATED	1							
24	1	26106-060402	BOLT M 6X 40 PLATED	1							
25	1	23876-030000	PLUG PT3/8,SCREW	1							
26	1	119593-11380	GASKET,BONNET	1							

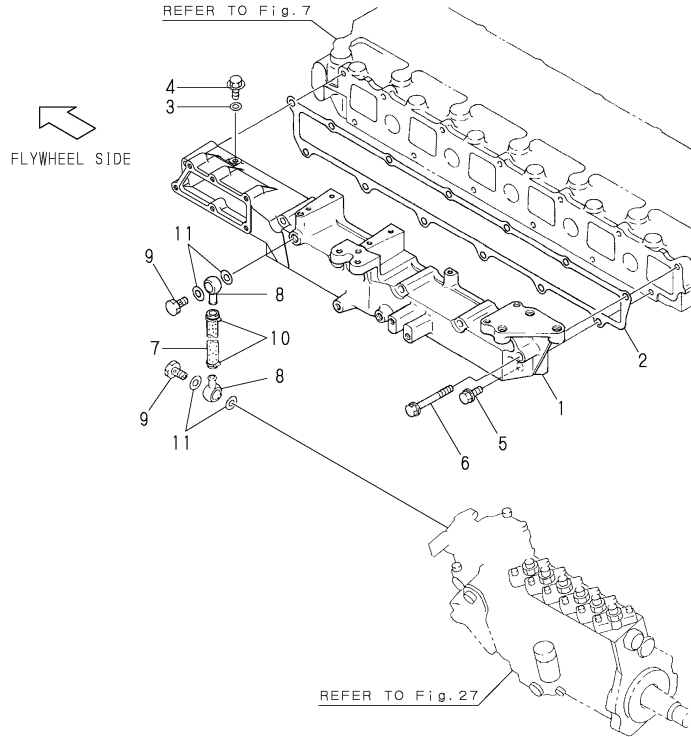
Fig.9. SUCTION MANIFOLD

(A)=6LY2(A-STE(P)
(B)=
(C)=

(D)=
(E)=
(F)=

Y00R5151

Fig. 9 SUCTION MANIFOLD

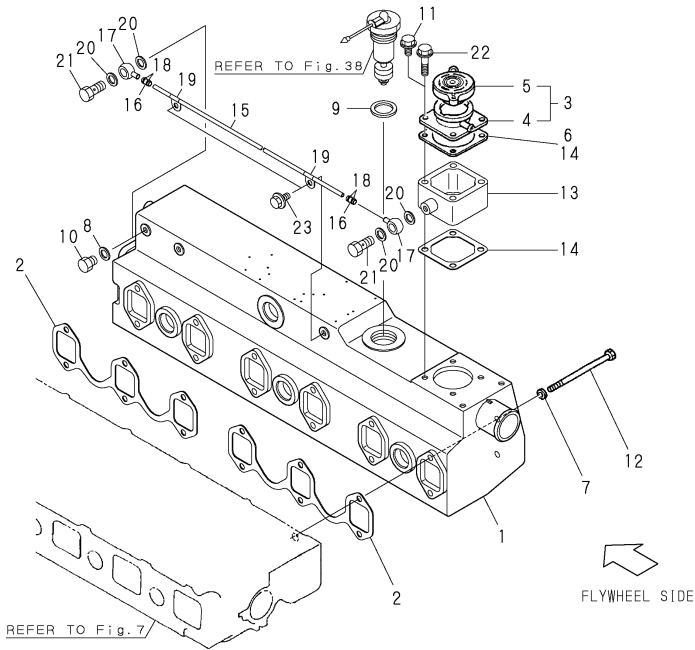


REF.	LEV.	PARTS NO.	DESCRIPTION	Q'TY						I	R
				(A)	(B)	(C)	(D)	(E)	(F)		
1	1	119574-12110	MANIHOLD,AIR INTAKE	1							
2	1	119593-12111	GASKET, SUC.MANIFOLD	1							
3	1	23414-080000	GASKET 8, ROUND	1							
4	1	26106-080122	BOLT M 8X 12 PLATED	1							
5	1	26106-080402	BOLT M 8X 40 PLATED	7							
6	1	26106-080702	BOLT M 8X 70 PLATED	6							
7	1	119574-18480	PIPE,BOOST CON.	1							
8	1	129590-18520	JOINT 10, PIPE	2							
9	1	124160-39140	BOLT 10, PIPE JOINT	2							
10	1	23000-013000	CLAMP 13	2							
11	1	23414-100000	GASKET 10, ROUND	4							

Fig.10. EXHAUST MANIFOLD

Y00R5151

Fig. 10 EXHAUST MANIFOLD



(A)=6LY2(A-STE(P)
(B)=
(C)=

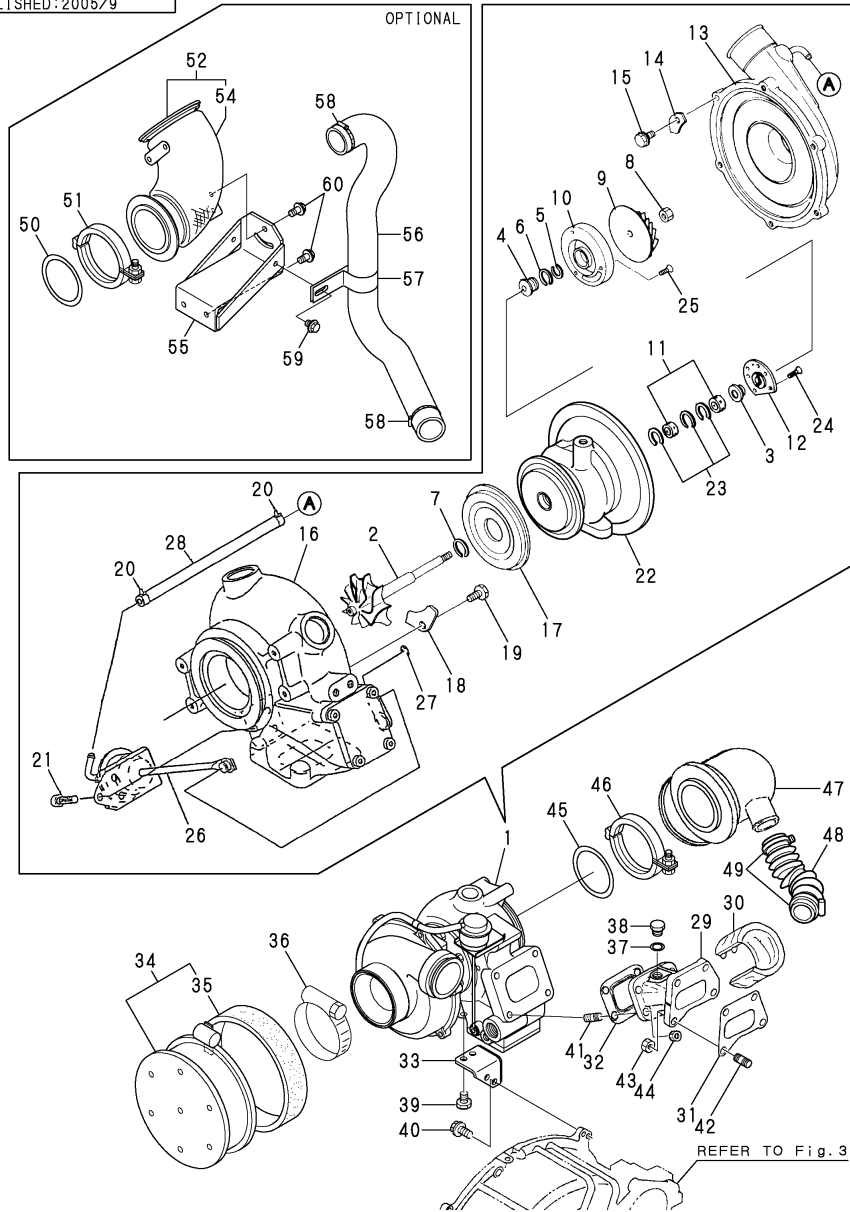
(D)=
(E)=
(F)=

REF.	LEV.	PARTS NO.	DESCRIPTION	Q'TY						I	R
				(A)	(B)	(C)	(D)	(E)	(F)		
1	1	119574-13110	MANIHOLD,EXHAUST	1							
2	1	119593-13202	GASKET	2							
3	1	129171-44600	FILLER ASSY	1							
4	2	129171-44620	FILLER ASSY	1							
5	2	129107-44590	CAP, RADIATOR	1							
6	1	120445-44640	GASKET	1							
7	1	22137-080000	WASHER 8, POLISHED	12							
8	1	23414-080012	GASKET 8	1							
9	1	23414-360000	GASKET 36	1							
10	1	124790-55770	PLUG 8	1							
11	1	26106-080142	BOLT M 8X 14 PLATED	4							
12	1	119593-13220	BOLT M 8X145	12							
13	1	119595-44600	SPACER,FILLER	1							1
14	1	120445-44640	GASKET	2							1
15	1	119595-44700	CWF-T,FILLER	1							1
16	1	119595-44801	JOINT,FILLER	2							1
17	1	104264-59030	JOINT 8, PIPE	2							1
18	1	23000-013000	CLAMP 13	4							1
19	1	23297-080081	RETAINER 8X 8	2							1
20	1	23414-080012	GASKET 8	4							1
21	1	23857-030000	JOINT BOLT 3	2							1
22	1	26106-080602	BOLT M 8X 60 PLATED	4							1
23	1	26106-080162	BOLT M 8X 16 PLATED	2							

Remarks
(1)OPTIONAL

Fig.11. TURBOCHARGER

P/C NEWS No.:Y00R5151-7
PUBLISHED:2005/9



Remarks
(1)OPTIONAL

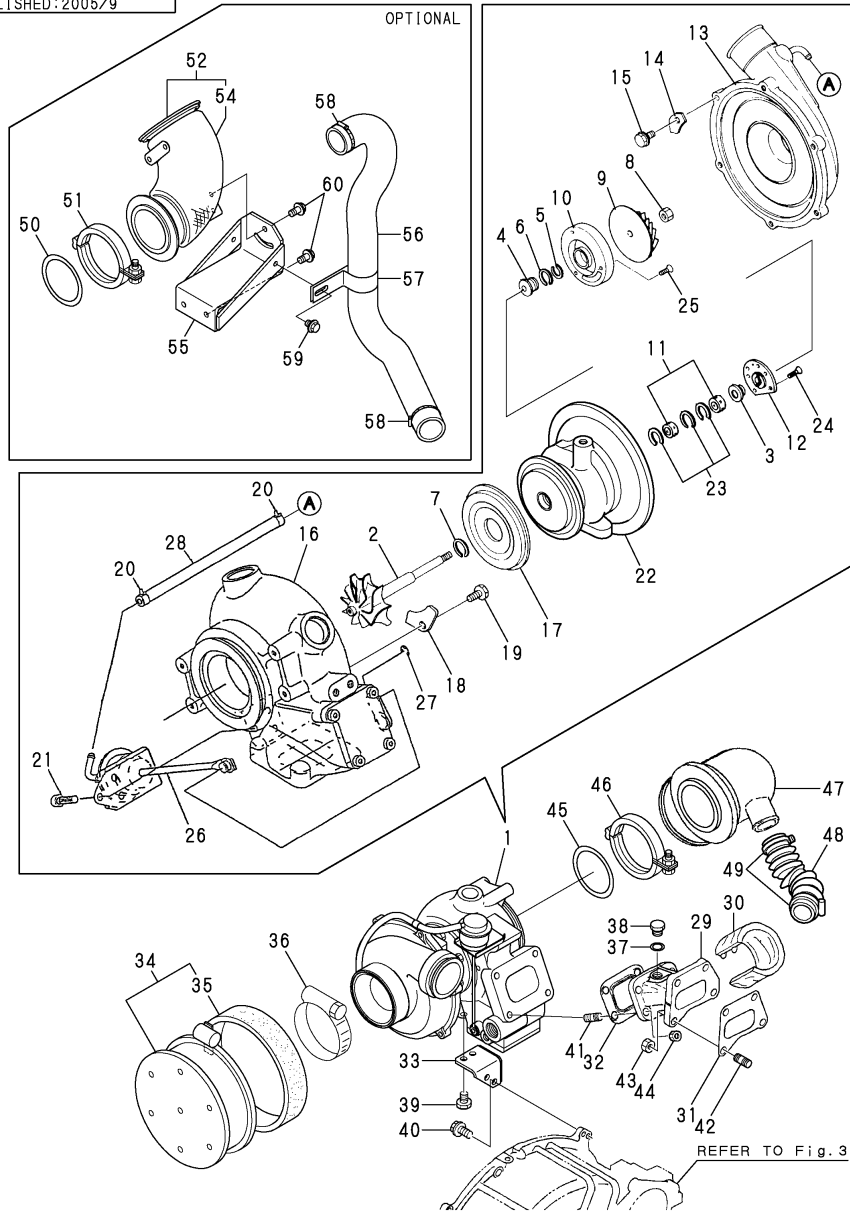
(A)=6LY2(A-STE(P
(B)=
(C)=

(D)=
(E)=
(F)=

REF.	LEV.	PARTS NO.	DESCRIPTION	QTY						I	R
				(A)	(B)	(C)	(D)	(E)	(F)		
1	1	119575-18011	TURBOCHARGER(RHC7W	1							
I	1-1	119575-18020	TURBOCHARGER(RHC7W	1							S
		(A=*2001.11)									
2	2	XNH271331	SHAFT,TURBINE	1							
I	2-1	XNH172003	SHAFT,TURBINE	1							S
		(A=*2001.11)									
3	2	XNH271351	BUSH	1							
4	2	XNH171881	OIL THROWER	1							
5	2	XNH261605	RING, SEAL	1							
6	2	XNH191305	RING, SEAL	1							
7	2	XNN171107	RING,SEAL	1							
8	2	XNN171110	LOCK NUT	1							
9	2	XNH175702	IMPELLA(COMPRESSER	1							
10	2	XNH172500	SEAL PLATE	1							
11	2	XNN173504	FLOATING METAL	2							
12	2	XNH273502	THRUST BEARING	1							
13	2	XNE974250	HOUSING(COMPRESSER	1							
14	2	XNH174404	RETAINER	6							
15	2	XNH174307	BOLT	6							
16	2	XNE977180	HAUSING, TURBINE	1							
I	16-1	XNE977160	HAUSING, TURBINE	1							S
		(A=*2001.11)									
17	2	XNH178265	PLATE,INSULATION	1							
18	2	XNN137423	RETAINER	8							
19	2	XNN137007	BOLT M8	8							
20	2	XNN976562	CLAMP	2							
21	2	XNH362809	FLAT BOLT	3							
22	2	XNE973420	BEARING HOUSING	1							
I	22-1	XNH173436	BEARING HOUSING	1							S
		(A=*2001.11)									
23	2	XNN173204	RETAINER RING	4							
24	2	XNH193006	BOLT	4							
25	2	XNB133206	SCREW	4							
26	2	XNH961270	ACTUATER	1							
I	26-1	XNH963611	ACTUATER	1							S
		(A=*2001.11)									
27	2	XJD532012	CIRCLIP	1							
28	2	XNH978942	BOOST HOSE	1							
29	1	119574-18050	BRACKET,TURBOCHAGER	1							
30	1	119593-18070	COVER	1							
31	1	119593-18080	GASKET	1							
32	1	119593-18110	GASKET	1							
33	1	119574-18290	SUPPORT,TURBOCHAGER	1							
34	1	119593-18871	SILENCER	1							
35	2	119593-18880	FILTER	1							
36	1	123658-18910	CLAMP	1							
37	1	23414-170000	GASKET 17, ROUND	2							
38	1	23894-030002	PLUG G3/8,HEX.	2							
39	1	26106-100182	BOLT M10X 18 PLATED	2							
40	1	26106-100222	BOLT M10X 22 PLATED	2							
41	1	26223-100252	STUD M10X 25	4							

Fig.11. TURBOCHARGER

P/C NEWS No.:Y00R5151-7
PUBLISHED:2005/9



Remarks
(1)OPTIONAL

(A)=6LY2(A-STE(P
(B)=
(C)=

(D)=
(E)=
(F)=

REF.	LEV.	PARTS NO.	DESCRIPTION	QTY						I	R
				(A)	(B)	(C)	(D)	(E)	(F)		
42	1	26223-100252	STUD M10X 25	4							
43	1	26703-100002	NUT M10	4							
44	1	26703-100002	NUT M10	4							
45	1	119574-13250	GASKET(T/C EXH	1							
46	1	119574-13300	V-CLAMP	1							
47	1	119574-13500	ELBOW, WATER MIXING	1							
48	1	119574-49751	HOSE,MIXING IN	1							
49	1	23000-054000	CLAMP 54	2							
50	1	119574-13250	GASKET(T/C EXH	1							1
51	1	119574-13300	V-CLAMP	1							1
52	1	119575-13300	BEND, EXH.	1							1
54	2	119575-13320	WOOL MAT	1							1
55	1	119575-13330	BRACKET,EXH.	1							1
56	1	119575-13340	HOSE, RISER	1							1
57	1	119575-13350	PIPE SUPPORT	1							1
58	1	23000-054000	CLAMP 54	2							1
59	1	26106-080102	BOLT M 8X 10 PLATED	1							1
60	1	26106-080142	BOLT M 8X 14 PLATED	4							1

Fig.12. AIR COOLER

(A)=6LY2(A-STE(P

(B)=

(C)=

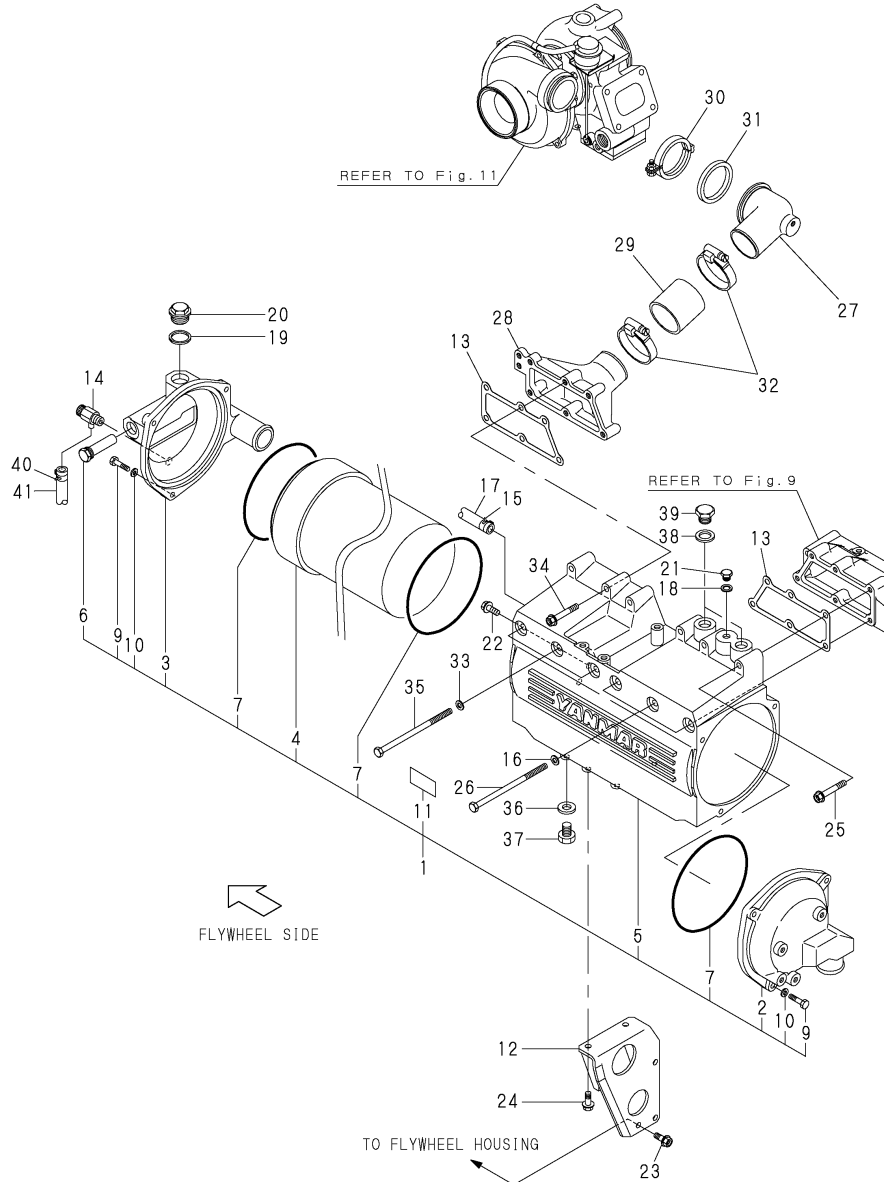
(D)=

(E)=

(F)=

Y00R5151

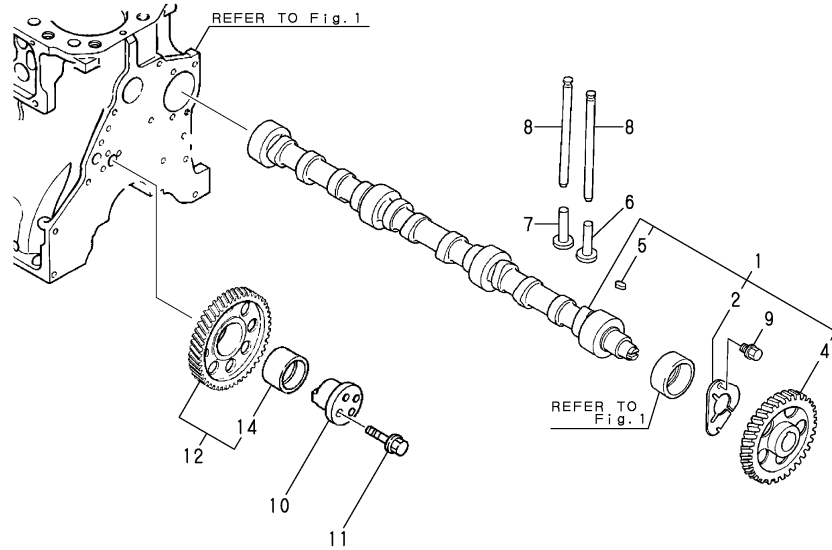
Fig. 12 AIR COOLER



REF.	LEV.	PARTS NO.	DESCRIPTION	Q'TY						I	R
				(A)	(B)	(C)	(D)	(E)	(F)		
1	1	119574-18102	INTERCOOLER ASSY	1							
2	2	119574-18750	WATER BOX	1							
3	2	119574-18760	WATER BOX	1							
4	2	119574-18770	TUBESTACK	1							
5	2	119574-18780	CYLINDER	1							
6	2	119574-18790	ZINC, ANTI-CORROSIVE	1							
7	2	119574-18810	O-RING SEAL	3							
9	2	X214320104	SCREW	6							
10	2	X211810030	WASHER	6							
11	2	119574-18820	LABEL	1							
12	1	119574-18120	SOPPORT,INTER COOLER	1							
13	1	119595-18600	GASKET,INTER COOLER	2							
14	1	119620-49290	COCK ASSY 1/4	1							
15	1	124766-59050	CLAMP 12	1							
16	1	22137-080000	WASHER 8, POLISHED	3							
17	1	23061-100750	PIPE 10X 750	1							
18	1	23414-120000	GASKET 12, ROUND	1							
19	1	22190-270002	SEAL WASHER 27S	1							
20	1	119574-18800	PLUG,M26X1.5	1							
21	1	23887-120002	PLUG 12,HEX.	1							
22	1	26106-080202	BOLT M 8X 20 PLATED	2							
23	1	26106-080202	BOLT M 8X 20 PLATED	3							
24	1	26106-080302	BOLT M 8X 30 PLATED	2							
25	1	26106-080552	BOLT M 8X 55 PLATED	3							
26	1	26116-081502	BOLT M 8X150 PLATED	3							
27	1	119574-18170	DUCT,T/C OUT	1							
28	1	119574-18180	DUCT,AIR COOLER IN	1							
29	1	119595-18250	HOSE,AIR DUCT	1							
30	1	119574-18700	V-CLAMP	1							
31	1	119593-18800	GASKET (T/C OUT	1							
32	1	127687-18910	CLAMP	2							
33	1	22137-080000	WASHER 8, POLISHED	3							
34	1	26113-080552	BOLT M 8X 55	3							
35	1	26113-081502	BOLT 8*150	3							
36	1	23414-080012	GASKET 8	1							
37	1	124790-55770	PLUG 8	1							
38	1	23414-200000	GASKET 20, ROUND	2							
39	1	23887-200002	PLUG 20, HEX.	2							
40	1	124460-77680	RETAINER	1							
41	1	23061-070400	PIPE 7X 400	1							

Fig.13. CAMSHAFT & DRIVING GEAR

P/C NEWS No:Y00R5151-7
PUBLISHED:2005/9



OCR10-G51501 13. CAMSHAFT & DRIVING GEAR

(A)=6LY2(A-STE(P)
(B)=
(C)=

(D)=
(E)=
(F)=

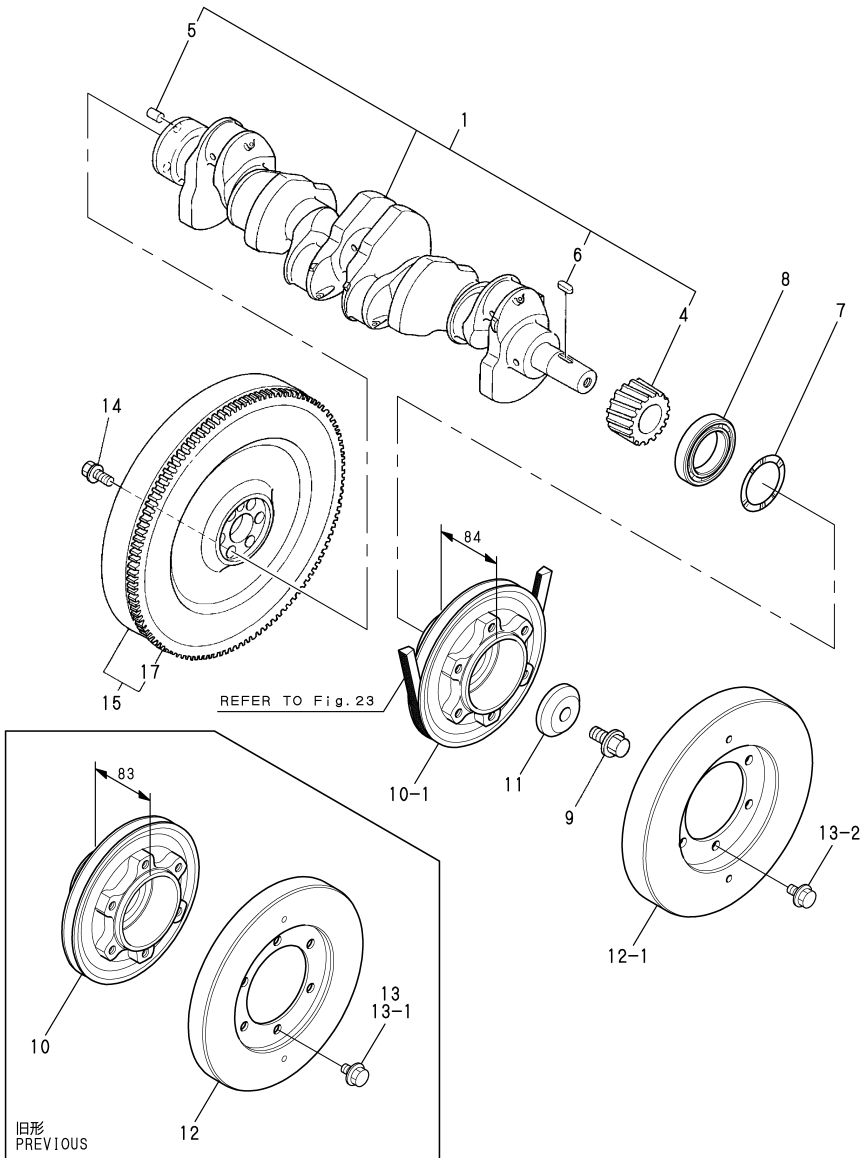
REF.	LEV.	PARTS NO.	DESCRIPTION	QTY						I	R
				(A)	(B)	(C)	(D)	(E)	(F)		
1	1	119595-14000	CAMSHAFT ASSY	1							
I	1A	1	119595-14000	CAMSHAFT ASSY	1						1
I	1A-1	1	119595-14050	CAMSHAFT ASSY	1						S 1
(A=*2001.11)											
2	2	119000-02450	BEARING, THRUST	1							
4	2	119000-14100	GEAR, CAMSHAFT Z=48	1							
5	2	22512-070140	KEY 7X 14	1							
6	1	119000-14200	TAPPET	6							
7	1	119595-14200	TAPPET	6							
8	1	119171-14400	PUSH ROD	12							
9	1	26106-080162	BOLT M 8X 16 PLATED	2							
10	1	119593-25051	SHAFT, IDLE GEAR	1							
11	1	119593-25060	BOLT	4							
12	1	119595-25100	GEAR ASSY, IDLE	1							
14	2	119593-25110	BUSH, IDLE GEAR	1							

Remarks
(1)6LY2A-STP

N:Old $\xrightarrow{\text{Yes}}$ New, Q:Old $\xrightarrow{\text{No}}$ New, R:Old $\xrightarrow{\text{Yes}}$ New, S:Old $\xrightarrow{\text{No}}$ New, W:Add, Z:Discontinued, F:Interchangeable by set, K:Qty Change

Fig.14. CRANKSHAFT & FLYWHEEL

P/C NEWS No:Y00R5151-9
PUBLISHED:2007/4



(A)=6LY2(A-STE(P
(B)=
(C)=

(D)=
(E)=
(F)=

REF.	LEV.	PARTS NO.	DESCRIPTION	QTY						I	R
				(A)	(B)	(C)	(D)	(E)	(F)		
1	1	719595-21700	CRANKSHAFT ASSY	1							
4	3	119595-21200	GEAR(CRANK)Z=24	1							
5	2	121850-21920	PARALLEL PIN 10X22	1							
6	2	22512-070220	KEY 7X22,FEATHER	1							
7	1	119595-21300	WASHER 50	1							
8	1	24101-060100	BALL BEARING	1							
9	1	123672-21500	BOLT	1							
10	1	119595-21650	PULLEY, CRANKSHAFT	1							
I	10-1	119595-21651	PULLEY, CRANKSHAFT	1							F 2
(A=E/#M56031)											
11	1	123672-21861	WASHER	1							
12	1	119593-28060	DAMPER	1							
I	12-1	119578-28000	DAMPER,CRANK	1							F 2
(A=E/#M56031)											
13	1	26106-100162	BOLT M10X 16 PLATED	6							
I	13-1	26106-100182	BOLT M10X 18 PLATED	6							N
(A=FROM 1ST)											
I	13-2	26106-100222	BOLT M10X 22 PLATED	6							F 2
(A=E/#M56031)											
14	1	119593-21500	BOLT	6							
15	1	119593-21602	FLYWHEEL W/RINGGEAR	1							
15A	1	119593-21602	FLYWHEEL W/RINGGEAR	1							1
15A-1	1	119575-21600	FLYWHEEL ASSY	1							S 1
(A=*2001.11)											
17	2	127410-21480	RING GEAR Z=129	1							

Remarks

- (1)6LY2A-STP
- (2)INTERCHANGEABLE BY SIMULTANEOUS REPLACEMENT WITH REF.NO.10-1,12-1, 13-2.

Fig.15. PISTON & CONNECTING ROD

(A)=6LY2(A-STE(P

(B)=

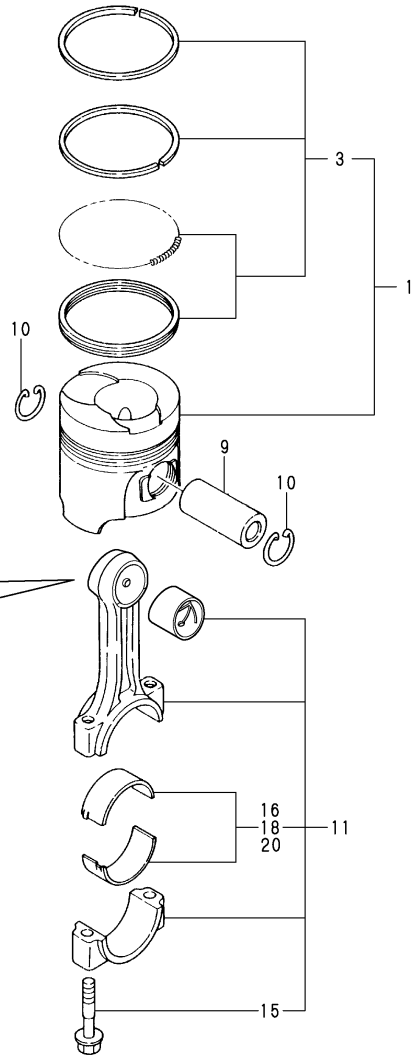
(C)=

(D)=

(E)=

(F)=

P/C NEWS No:Y00R5151-7
PUBLISHED:2005/9



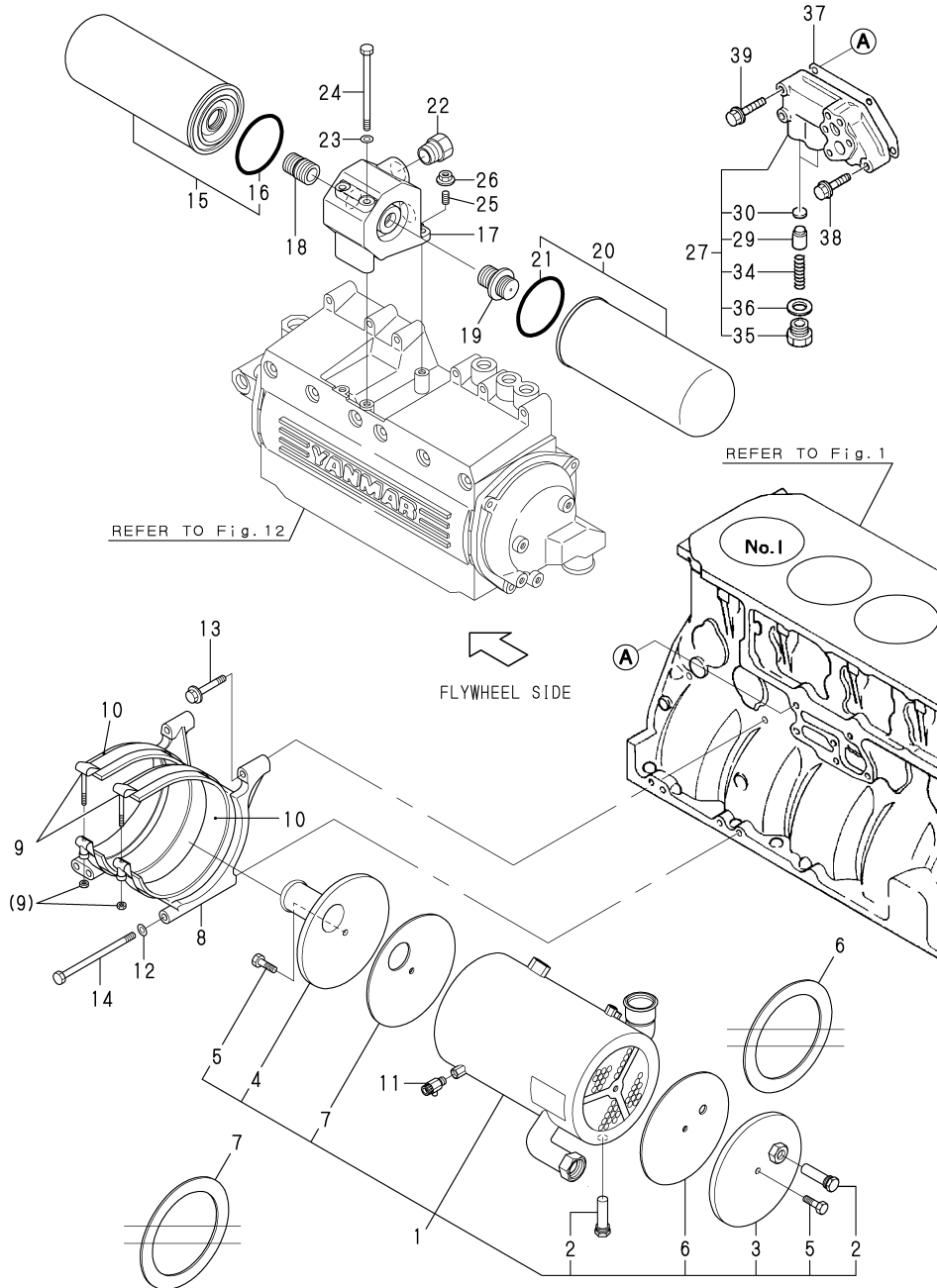
品質保証上 販売不可
NOT SOLD SEPARATELY.

REF.	LEV.	PARTS NO.	DESCRIPTION	Q'TY						I	R
				(A)	(B)	(C)	(D)	(E)	(F)		
1	1	719595-22720	PISTON W/RINGS	6							
I	1A	1	719595-22720	PISTON W/RINGS	6						3
I	1A-1	1	719575-22720	PISTON W/RINGS	6						S 3
		(A=*2001.11)									
3	2	119595-22300	RING SET	6							
9	1	119503-22300	PIN, PISTON	6							
10	1	22252-000370	CIRCLIP 37	12							
11	1	719595-23701	ROD ASSY, CONNECTING	6							
15	2	119593-23200	BOLT, ROD	12							
16	2	719595-23600	METAL, CRANK PIN	6							
18	1	119595-23310	CRANK PIN METAL 0.50	6							W 2
		(A=FROM 1ST)									
18A	1	119593-23400	CRANK PIN METAL 0.25	6							W 1
		(A=FROM 1ST)									
20	1	119595-23320	CRANK PIN METAL 1.00	6							W 4
		(A=FROM 1ST)									

Remarks
 (1)UNDER SIZED(U.S.=0.25)PART.
 (2)UNDER SIZED(U.S.=0.50)PART.
 (3)6LY2A-STP
 (4)U.S.(1.00) CANNOT BE SOLD.

Fig.16. LUB.OIL COOLER & LUB.OIL STRAINER

P/C NEWS No.: Y00R5151-6
PUBLISHED : 2005/8



(A)=6LY2(A-STE(P

(B)=

(C)=

(D)=

(E)=

(F)=

REF.	LEV.	PARTS NO.	DESCRIPTION	QTY						I	R
				(A)	(B)	(C)	(D)	(E)	(F)		
1	1	119574-33011	LUB.OIL COOLER	1							
2	2	119574-44150	ZINC, ANTI-CORROSIVE	2							
3	2	119574-33180	COVER B COMPL.								
4	2	119574-33170	COVER A ASSY	1							
5	2	119574-44180	BOLT	2							
I	6	2	119574-66160	GASKET B	1						
I	7	2	119574-33150	GASKET A	1						
8	1	119574-33050	BRACKET,LO COOLER	1							
9	1	119574-33600	CLAMP,T-BOLT	2							
10	1	119574-33621	RUBBER SEAT	2							
11	1	119620-49290	COCK ASSY 1/4	1							
12	1	22137-080000	WASHER 8, POLISHED	3							
13	1	26106-080502	BOLT M 8X 50 PLATED	2							
14	1	26116-081302	BOLT M 8X130 PLATED	3							
15	1	119593-35100	STRAINER (FF) CMP	1							
16	2	X0588530373	GASKET	1							
17	1	119574-35150	BRACKET,LO FILTER	1							
18	1	119593-35150	STUD,LUB.OIL FILTER	1							
19	1	119593-35161	STUD,LUB.OIL FILTER	1							
20	1	119593-35400	STRAINER (BP)	1							
21	2	X0588530373	GASKET	1							
22	1	119574-39200	JOINT,LOT	2							
23	1	22137-080000	WASHER 8, POLISHED	2							
24	1	26116-081202	BOLT M 8X120 PLATED	2							
25	1	26226-080182	STUD M 8X 18 PLATED	1							
26	1	26366-080002	NUT M 8	1							
26-1	1	26306-080002	NUT	1							N
(A=E/#50655)											
27	1	119593-34001	VALVE ASSY,CONTROL	1							
29	2	119000-34030	VALVE, OIL PRESS	2							
30	2	121850-35200	SHIM SET	2							
34	2	124411-35520	SPRING	2							
35	2	123672-84530	RETAINER	2							
36	2	23414-180000	GASKET 18, ROUND	2							
37	1	119593-34020	GASKET	1							
38	1	26106-080402	BOLT M 8X 40 PLATED	1							
39	1	26106-080452	BOLT M 8X 45 PLATED	4							

Fig.17. LUB.OIL PUMP & LUB.OIL PIPE

(A)=6LY2(A-STE(P

(B)=

(C)=

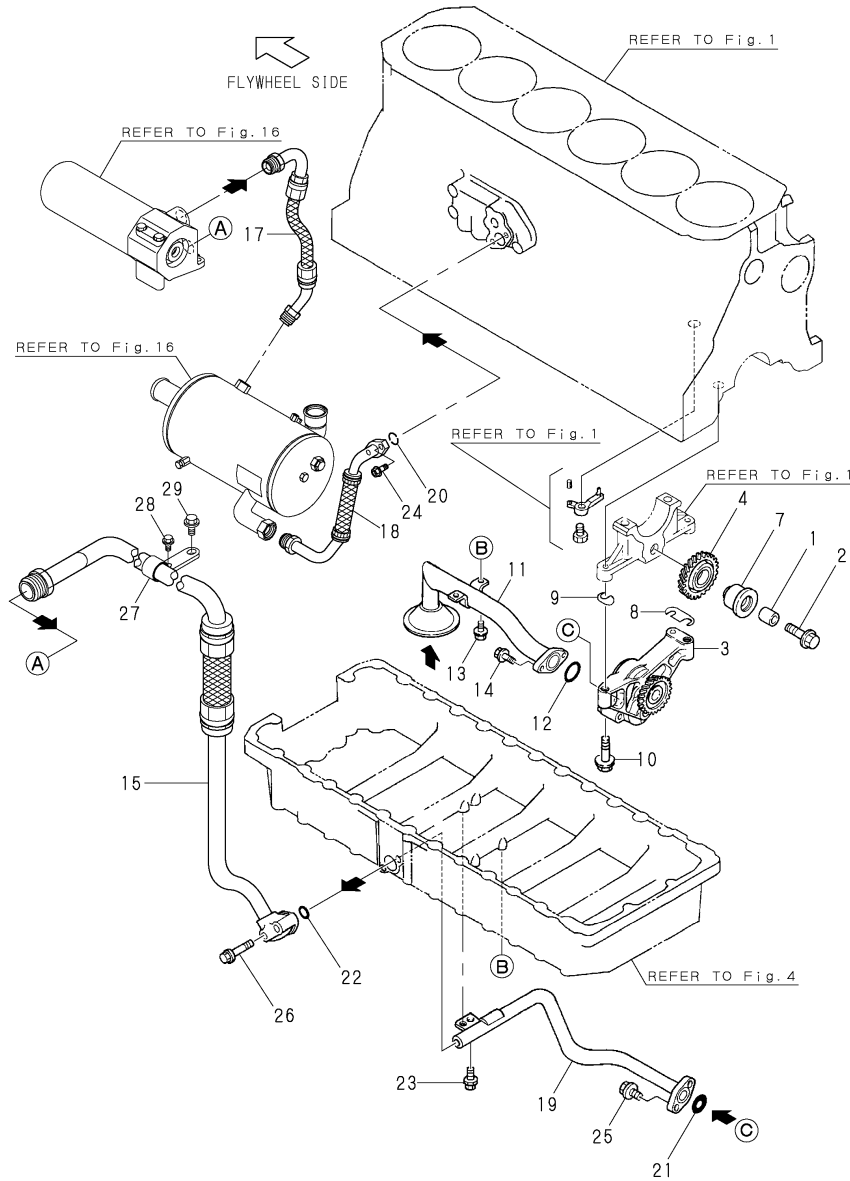
(D)=

(E)=

(F)=

Y00R5151

Fig. 17 LUB.OIL PUMP & LUB.OIL PIPE



REF.	LEV.	PARTS NO.	DESCRIPTION	QTY						I	R
				(A)	(B)	(C)	(D)	(E)	(F)		
1	1	124411-28400	PIN	2							
2	1	121950-28420	BOLT 10X45	1							
3	1	119593-32001	PUMP ASSY,LUB.OIL	1							
4	1	119593-32500	GEAR ASSY, IDLE Z=29	1							
7	1	119593-32530	SHAFT,IDLE GEAR	1							
8	1	119593-32700	SHIM	2							
9	1	119593-32710	SHIM	2							
10	1	26106-100552	BOLT M10X 55 PLATED	3							
11	1	119593-35191	PIPE,LUB.OIL	1							
12	1	24311-000280	O-RING 1A P-28.0	1							
13	1	26013-080252	BOLT M 8X 25	2							
14	1	26106-080162	BOLT M 8X 16 PLATED	2							
15	1	119574-39051	PIPE,LO FILTER IN	1							
17	1	119574-39111	PIPE,LUB OIL	1							
18	1	119574-39152	PIPE,LO COOLER OUT	1							
19	1	119593-39150	PIPE,LUB OIL	1							
20	1	24311-000200	O-RING 1A P-20.0	1							
21	1	24311-000200	O-RING 1A P-20.0	1							
22	1	24314-000200	O-RING 4C P-20.0	1							
23	1	26106-080162	BOLT M 8X 16 PLATED	2							
24	1	26106-080202	BOLT M 8X 20 PLATED	2							
25	1	26106-080222	BOLT M 8X 22 PLATED	2							
26	1	26106-080502	BOLT M 8X 50 PLATED	2							
27	1	119574-39120	RETAINER	1							
28	1	26106-060122	BOLT M 6X 12 PLATED	1							
29	1	26106-080162	BOLT M 8X 16 PLATED	1							

Fig.18. LUB.OIL PIPE(TURBOCHAGER)

(A)=6LY2(A-STE(P

(B)=

(C)=

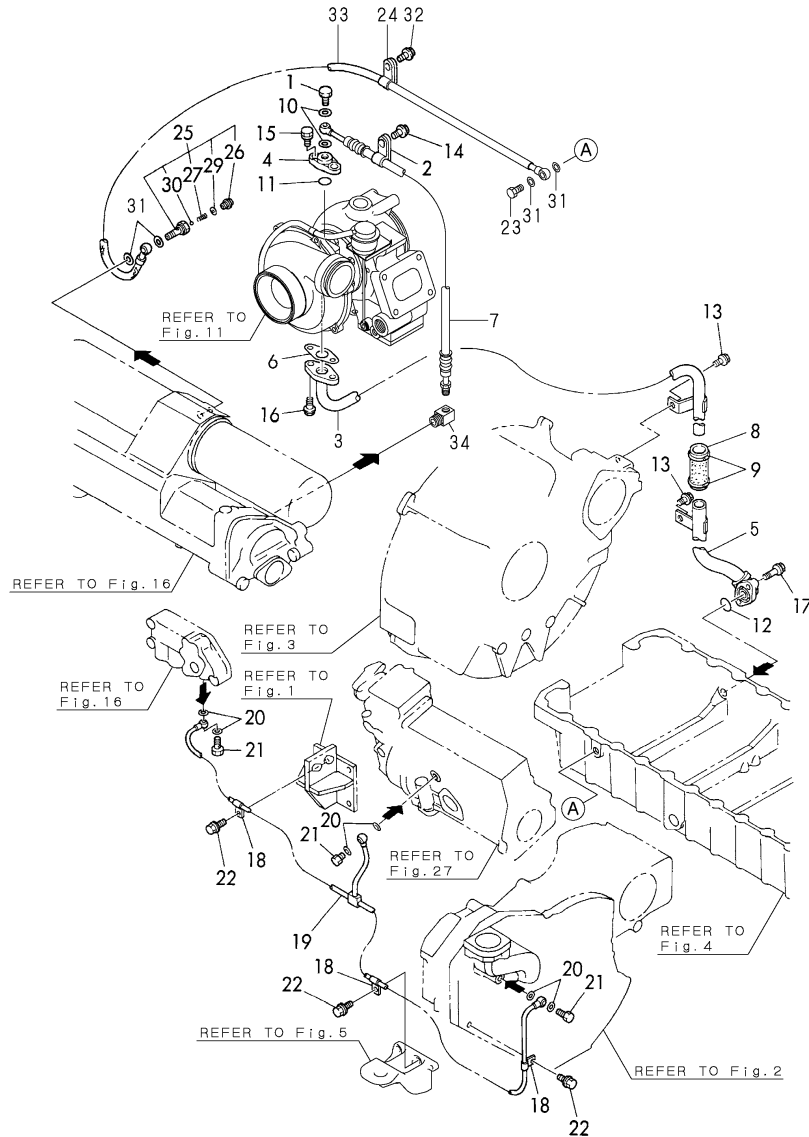
(D)=

(E)=

(F)=

Y00R5151

Fig. 18 LUB. OIL PIPE (TURBOCHARGER)

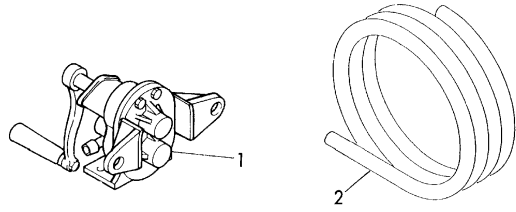


REF.	LEV.	PARTS NO.	DESCRIPTION	Q'TY						I	R
				(A)	(B)	(C)	(D)	(E)	(F)		
1	1	124160-39140	BOLT 10, PIPE JOINT	1							
2	1	119593-39450	RETAINER	1							
3	1	119574-39601	PIPE A,LUB.OIL T/C O	1							
4	1	119593-39620	SPACER	1							
5	1	119574-39651	PIPE B,LUB.OIL T/C O	1							
6	1	119593-39690	GASKET	1							
7	1	119595-39700	PIPE,LO T/C IN	1							
8	1	119574-39820	HOSE,LUB.OIL	1							
9	1	23000-028000	CLAMP 28	2							
10	1	23414-100000	GASKET 10, ROUND	2							
11	1	24314-000200	O-RING 4C P-20.0	1							
12	1	24324-000250	O-RING 4C G-25.0	1							
13	1	26106-080162	BOLT M 8X 16 PLATED	2							
14	1	26106-080162	BOLT M 8X 16 PLATED	1							
15	1	26106-080202	BOLT M 8X 20 PLATED	2							
16	1	26106-080252	BOLT M 8X 25 PLATED	2							
17	1	26106-100222	BOLT M10X 22 PLATED	2							
18	1	124450-39240	RETAINER, PIPE	3							
19	1	119593-39401	PIPE,LUB OIL	1							
20	1	23414-080000	GASKET 8, ROUND	6							
21	1	23857-030000	JOINT BOLT 3	3							
22	1	26106-080122	BOLT M 8X 12 PLATED	3							
23	1	124160-39140	BOLT 10, PIPE JOINT	1							
24	1	119593-39450	RETAINER	1							
25	1	119187-39700	VALVE ASSY, CHECK	1							
26	2	127610-39350	RETAINER	1							
27	2	127687-39360	SPRING	1							
29	2	23414-100014	PACKING 10,ROUND	1							
30	2	24190-070001	BALL 7/32	1							
31	1	23414-100000	GASKET 10, ROUND	4							
32	1	26106-080162	BOLT M 8X 16 PLATED	1							
33	1	119588-39750	PIPE,LUB.OIL	1							
34	1	119574-39720	CONNECTOR	1							

Fig.19. OIL SUCTION/DRAIN PUMP

Y00R5151

Fig. **19** OIL SUCTION/DRAIN PUMP



OCR10-G51501 19. OIL SUCTION/DRAIN PUMP

(A)=6LY2(A-STE(P)
(B)=
(C)=

(D)=
(E)=
(F)=

REF.	LEV.	PARTS NO.	DESCRIPTION	Q'TY						I	R
				(A)	(B)	(C)	(D)	(E)	(F)		
1	1	124413-39100	PUMP, OIL SUMP	1							1
2	1	43720-001220	PIPE	1							1

Remarks
(1)OPTIONAL

Fig.20. BILGE PUMP(STD,OPTIONAL)

(A)=6LY2(A-STE(P

(B)=

(C)=

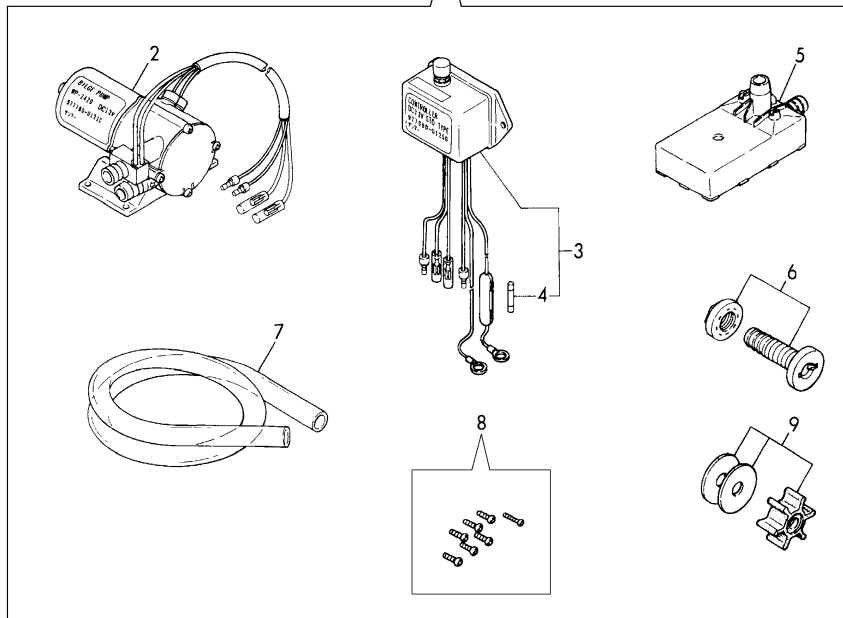
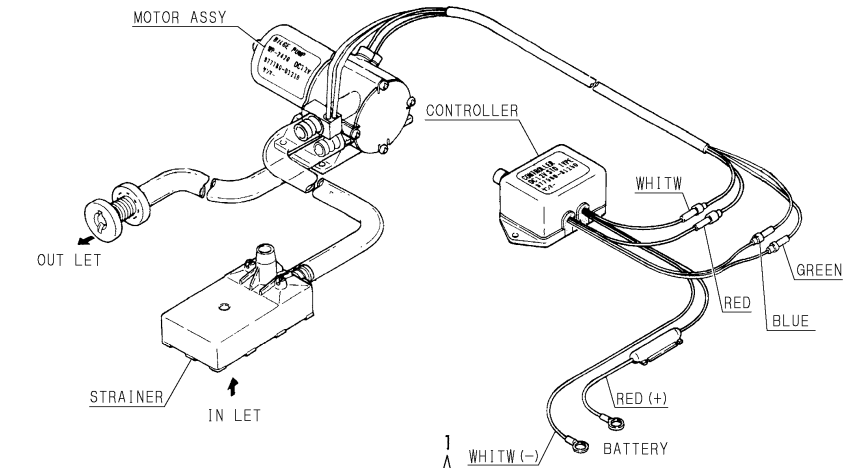
(D)=

(E)=

(F)=

Y00R5151

Fig. 20 BILGE PUMP (STD, OPTIONAL)



REF.	LEV.	PARTS NO.	DESCRIPTION	QTY						I	R
				(A)	(B)	(C)	(D)	(E)	(F)		
1	1	977780-01210	PUMP(12V).BILGE	1							
2	2	977780-01230	MOTOR ASSY(BILG PUMP	1							
3	2	977780-01250	CONTROLLER	1							
4	3	X8636008003	FUSE	1							
5	2	X179100021X	STRAINER	1							
6	2	X179100100X	PIPE ASSY	1							
7	2	X0044021509	HOSE A	1							
8	2	X199903800X	SCREW KIT	1							
9	2	977780-03000	INPELLER	1							

Fig.21. BILGE PUMP(DX,OPTIONAL)

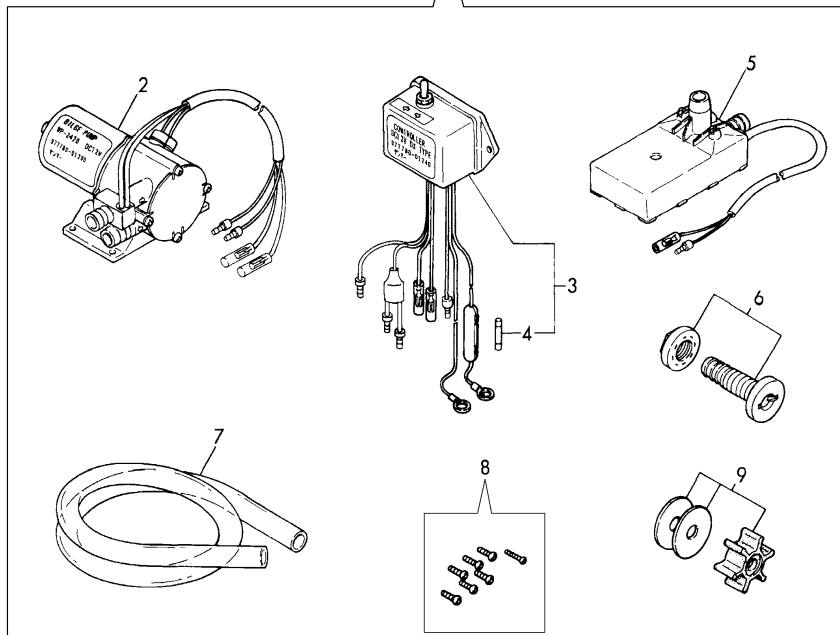
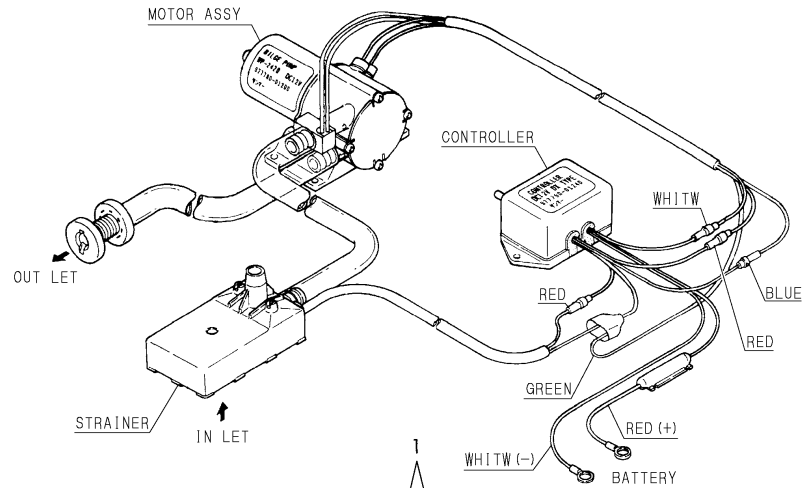
OCR10-G51501 21. BILGE PUMP(DX,OPTIONAL)

(A)=6LY2(A-STE(P
(B)=
(C)=

(D)=
(E)=
(F)=

Y00R5151

Fig. **21** BILGE PUMP (DX, OPTIONAL)



REF.	LEV.	PARTS NO.	DESCRIPTION	QTY						I	R
				(A)	(B)	(C)	(D)	(E)	(F)		
1	1	977780-01200	PUMP(12V).BILGE	1							
2	2	977780-01230	MOTOR ASSY(BILG PUMP	1							
3	2	977780-01240	CONTROLLER	1							
4	3	X8636008003	FUSE	1							
5	2	X179100011X	STRAINER	1							
6	2	X179100100X	PIPE ASSY	1							
7	2	X0044021509	HOSE A	1							
8	2	X199903800X	SCREW KIT	1							
9	2	977780-03000	INPELLER	1							

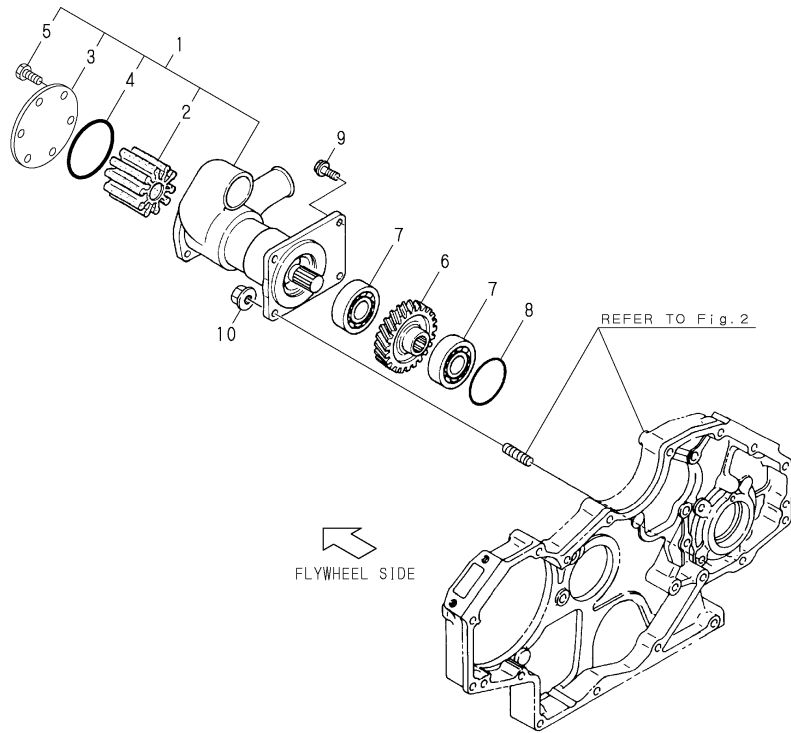
Fig.22. COOLING SEA WATER PUMP

(A)=6LY2(A-STE(P
(B)=
(C)=

(D)=
(E)=
(F)=

Y00R5151

Fig. **22** C. S. W. PUMP



REF.	LEV.	PARTS NO.	DESCRIPTION	Q'TY						I	R
				(A)	(B)	(C)	(D)	(E)	(F)		
1	1	119574-42500	PUMP,SEA WATER	1							
2	2	119574-42550	IMPELLER	1							
3	2	119574-42560	END COVER	1							
4	2	119574-42570	O-RING	1							
5	2	119175-42620	SCREW	6							
6	1	119100-26200	GEAR Z=27	1							
7	1	24101-060064	BALL BEARING	2							
8	1	24341-000800	O-RING 1A S-80.0	1							
9	1	26106-080202	BOLT M 8X 20 PLATED	2							
10	1	26366-080002	NUT M 8	2							
I 10-1	1	26306-080002	NUT	2							N

(A=E/#50655)

Fig.23. COOLING FRESH WATER PUMP

(A)=6LY2(A-STE(P

(B)=

(C)=

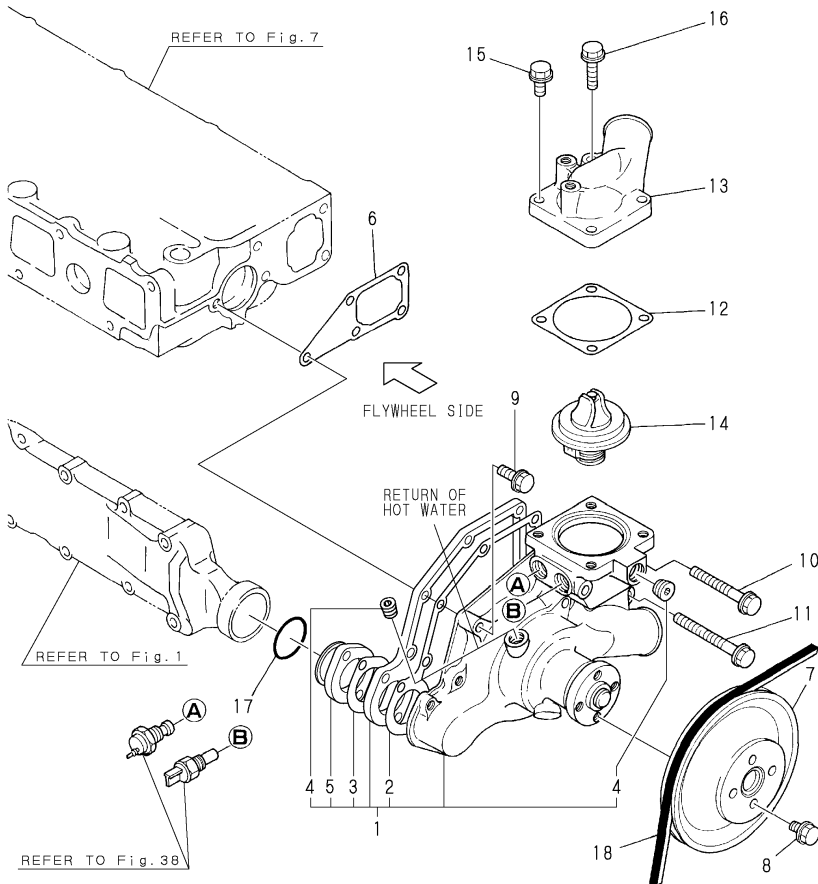
(D)=

(E)=

(F)=

Y00R5151

Fig. **23** C. F. W. PUMP



REF.	LEV.	PARTS NO.	DESCRIPTION	QTY						I	R
				(A)	(B)	(C)	(D)	(E)	(F)		
1	1	119593-42010	PUMP ASSY, FRESH W.	1							
2	2	XKWPY642021	PACKING	1							
3	2	119593-42130	PACKING	1							
4	2	23871-030000	PLUG PT3/8,SCREW	2							
5	2	119593-42120	FLANGE	1							
6	1	119593-42021	GASKET, (NON-ASB.)	1							
7	1	119593-42300	V-PULLEY	1							
8	1	26106-080182	BOLT M 8X 18 PLATED	4							
9	1	26106-080302	BOLT M 8X 30 PLATED	1							
10	1	26106-080802	BOLT M 8X 80 PLATED	2							
11	1	26106-080952	BOLT M 8X 95 PLATED	2							
12	1	119593-49291	GASKET, (NON-ASB.)	1							
13	1	119593-49530	COVER (THERMOSTAT	1							
14	1	127605-48590	THERMOSTAT	1							
15	1	26106-080252	BOLT M 8X 25 PLATED	3							
16	1	26106-080452	BOLT M 8X 45 PLATED	1							
17	1	24321-000450	O-RING 1A G-45.0	1							
18	1	119593-42280	V-BELT	1							

Fig.24. COOLING FRESH WATER COOLER

(A)=6LY2(A-STE(P

(B)=

(C)=

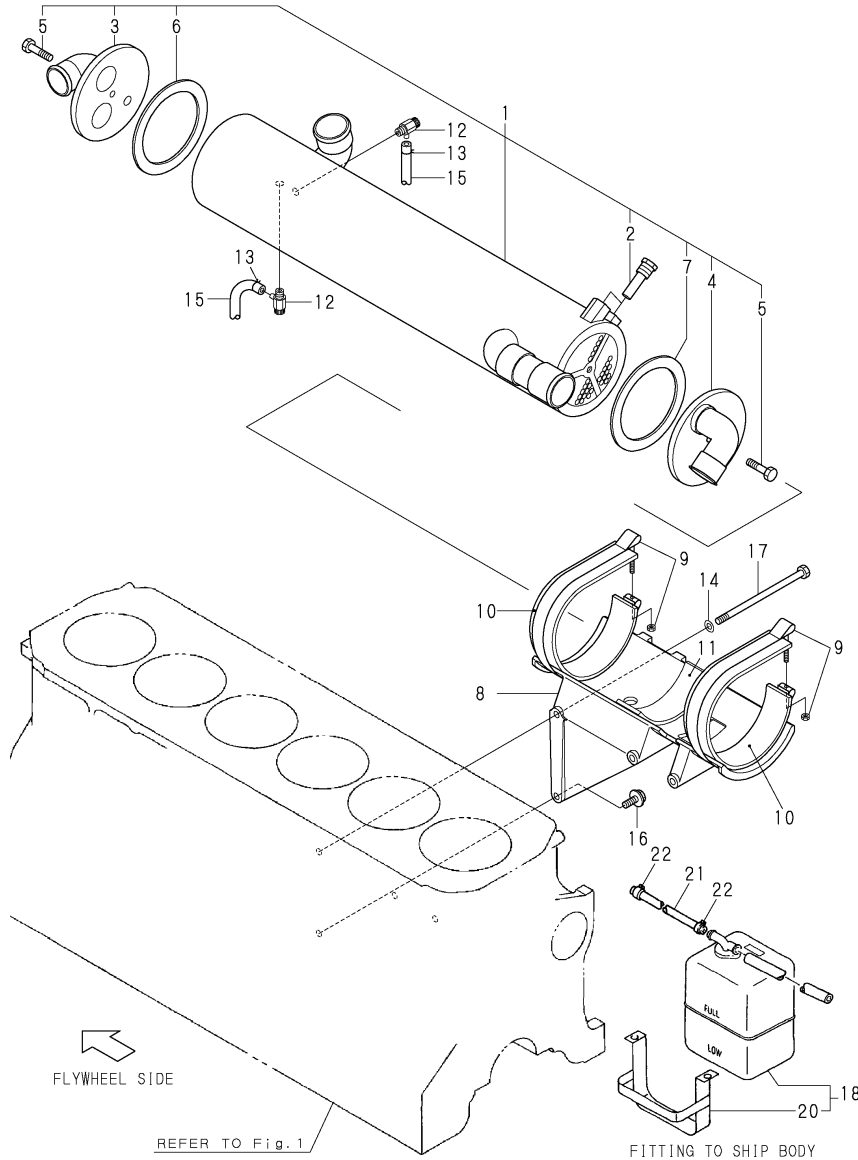
(D)=

(E)=

(F)=

Y00R5151

Fig. **24** C. F. W. COOLER

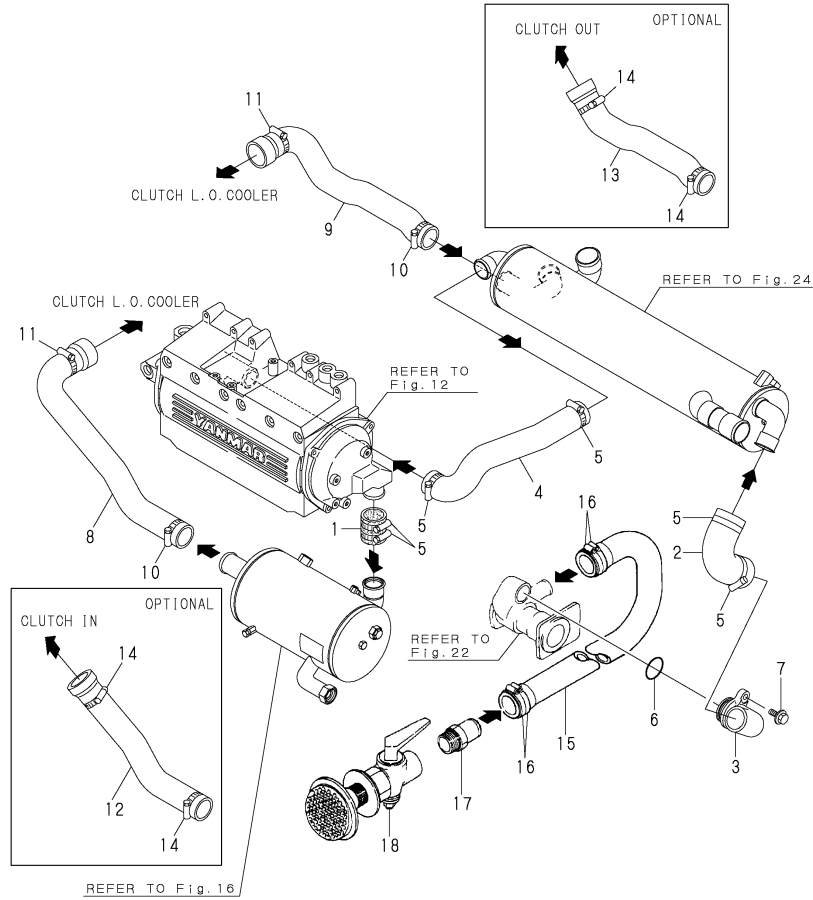


REF.	LEV.	PARTS NO.	DESCRIPTION	QTY						I	R
				(A)	(B)	(C)	(D)	(E)	(F)		
1	1	119574-44011	HEAT EXCHANGER	1							
2	2	119574-44150	ZINC, ANTI-CORROSIVE	2							
3	2	119574-44200	COVER B CMP	1							
4	2	119574-44190	COVER A CMP	1							
5	2	119574-44180	BOLT	2							
6	2	119574-44170	GASKET B	1							
7	2	119574-44160	GASKET A	1							
8	1	119574-44050	BRACKET,CWF COOLER	1							
9	1	119574-44600	CLAMP,T-BOLT	2							
10	1	119574-44621	RUBBER SEAT	2							
11	1	119574-44630	RUBBER SEAT	1							
12	1	119620-49290	COCK ASSY 1/4	2							
13	1	124460-77680	RETAINER	2							
14	1	22137-080000	WASHER 8, POLISHED	3							
15	1	23061-070400	PIPE 7X 400	2							
16	1	26106-080202	BOLT M 8X 20 PLATED	1							
17	1	26116-081502	BOLT M 8X150 PLATED	3							
18	1	720445-44201	SUB RESERVOIR ASSY	1							
20	2	119593-44560	BRACKET,RESERVOIR	1							
21	1	124790-44560	PIPE, C. WATER	1							
22	1	23010-013000	CLAMP 13	2							

Fig.25. COOLING SEA WATER PIPE

Y00R5151

Fig. **25** C. S. W. PIPE



(A)=6LY2(A-STE(P

(B)=

(C)=

(D)=

(E)=

(F)=

REF.	LEV.	PARTS NO.	DESCRIPTION	QTY						I	R
				(A)	(B)	(C)	(D)	(E)	(F)		
1	1	119574-49050	HOSE,SEA WATER	1							
2	1	119574-49061	HOSE,SEA WATER	1							
3	1	119574-49070	BEND,SEA WATER	1							
4	1	119574-49080	HOSE,COOLER OUT	1							
5	1	23000-054000	CLAMP 54	6							
6	1	24321-000350	O-RING 1A G-35.0	1							
7	1	26106-080202	BOLT M 8X 20 PLATED	1							
8	1	119574-49700	HOSE,CLUTCH IN	1							
9	1	119574-49711	HOSE,CLUTCH OUT	1							
10	1	23000-054000	CLAMP 54	2							
11	1	23000-060000	CLAMP 60	2							
12	1	119575-49720	HOSE,CLUTCH IN	1							1
13	1	119575-49730	HOSE,CLUTCH OUT	1							1
14	1	23000-054000	CLAMP 54	4							1
15	1	127610-49010	PIPE, COOLING WATER	1							1
16	1	23000-054000	CLAMP 54	4							1
17	1	43530-500610	JOINT (30A)	1							1
18	1	43662-030030	COCK ASSY, SEA WATER	1							1

Remarks
(1)OPTIONAL

N:Old $\xrightarrow{\text{Yes}}$ New, Q:Old $\xrightarrow{\text{No}}$ New, R:Old $\xrightarrow{\text{Yes}}$ New, S:Old $\xrightarrow{\text{No}}$ New, W:Add, Z:Discontinued, F:Interchangeable by set, K:Q'ty Change

Fig.26. COOLING FRESH WATER PIPE

(A)=6LY2(A-STE(P

(B)=

(C)=

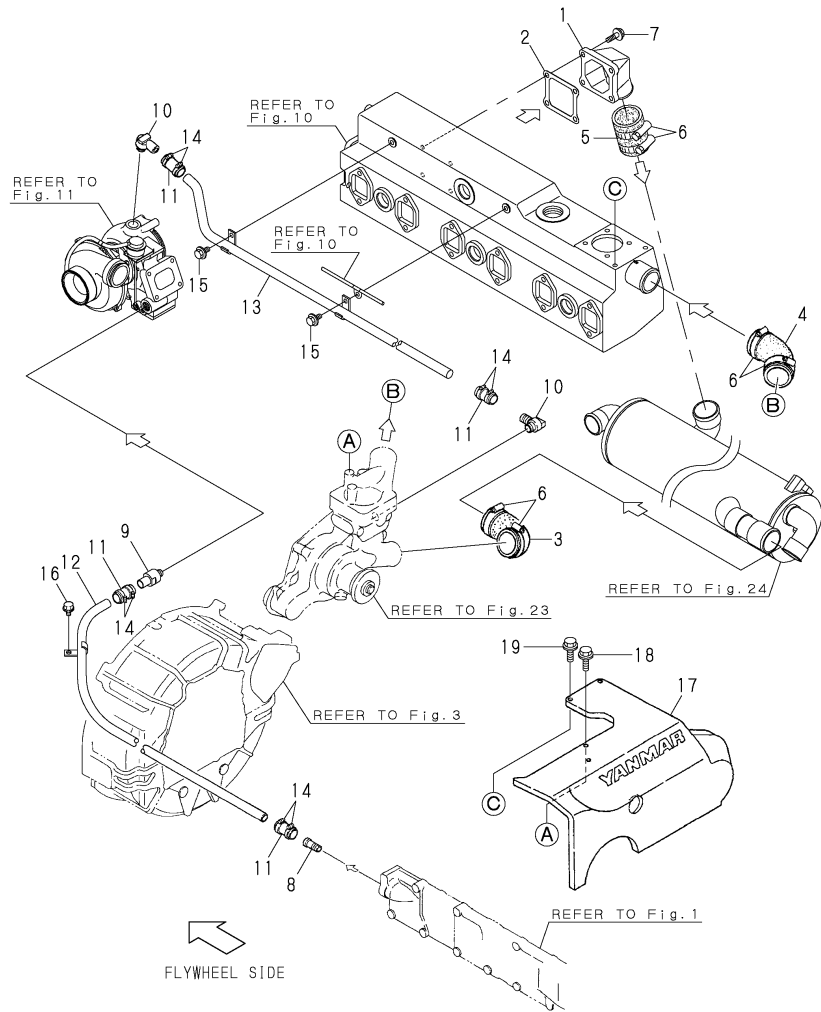
(D)=

(E)=

(F)=

Y00R5151

Fig. 26 C.F.W. PIPE

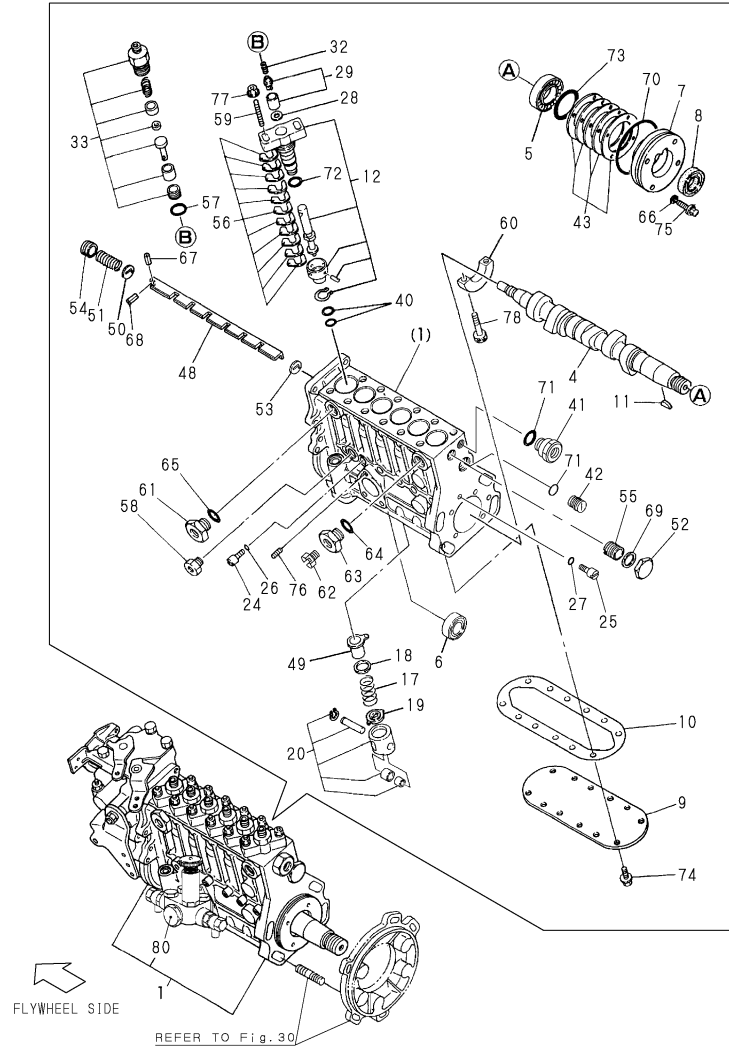


REF.	LEV.	PARTS NO.	DESCRIPTION	QTY						I	R
				(A)	(B)	(C)	(D)	(E)	(F)		
1	1	119574-49150	BEND,FRESH WATER	1							
2	1	119574-49160	GASKET,CWF BEND	1							
3	1	119574-49231	HOSE,A 45	1							
4	1	119574-49250	HOSE,B 45	1							
5	1	119574-49270	HOSE,C 45	1							
6	1	23000-060000	CLAMP 60	6							
7	1	26106-080252	BOLT M 8X 25 PLATED	4							
8	1	123325-49220	JOINT, PIPE	1							
9	1	119574-49321	JOINT,T/C CWF	1							
10	1	119593-49320	JOINT	2							
11	1	119574-49300	HOSE,FRESH WATER	4							
12	1	119574-49400	PIPE,T/C IN	1							
13	1	119574-49420	PIPE, T/C OUT	1							
14	1	23000-028000	CLAMP 28	8							
15	1	26106-080162	BOLT M 8X 16 PLATED	2							
16	1	26106-080162	BOLT M 8X 16 PLATED	1							
17	1	119593-77460	COVER	1							
18	1	26106-080252	BOLT M 8X 25 PLATED	2							
19	1	26106-080302	BOLT M 8X 30 PLATED	2							

Fig.27. FUEL INJECTION PUMP

Y00R5151

Fig. 27 FUEL INJECTION PUMP



Remarks
 (1) GOVERNOR ASSY(FIG28) AND FUEL FEED PUMP ASSY(FIG29) IS INCORPORATED IN THIS FUEL INJECTION PUMP ASSY.(REF NO.1)

(A)=6LY2(A-STE(P

(B)=

(C)=

(D)=

(E)=

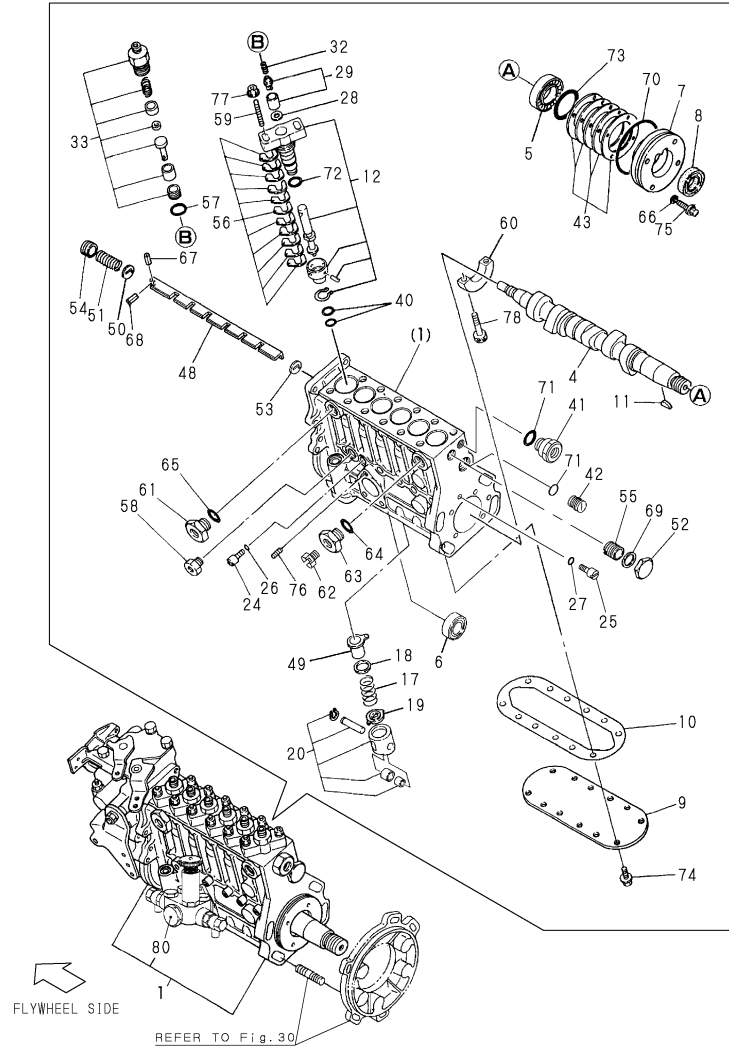
(F)=

REF.	LEV.	PARTS NO.	DESCRIPTION	Q'TY						I	R
				(A)	(B)	(C)	(D)	(E)	(F)		
1	1	719575-51300	PUMP ASSY, F.INJECT.	1							1
4	3	119595-51030	CAMSHAFT	1							
5	3	119595-51050	BEARING	1							
6	3	124410-51050	BEARING, TAPER ROLLE	1							
7	3	119595-51060	SUPPORT, BEARING	1							
8	3	119595-51070	OIL SEAL	1							
9	3	119593-51080	COVER	1							
10	3	119593-51090	GASKET	1							
11	3	144626-51090	KEY 5X19	1							
12	3	119595-51100	PLUNGER ASSY	6							
17	3	119000-51161	SPRING	6							
18	3	119000-51170	SEAT A, PLNGR.SPRING	6							
19	3	119000-51181	SEAT B, PLNGR.SPRING	6							
20	3	119595-51200	TAPPET ASSY	6							
24	3	129155-51270	LOCKING, TAPPET	6							
25	3	129155-51270	LOCKING, TAPPET	2							
26	3	129155-51280	O-RING S6	6							
27	3	129155-51280	O-RING S6	2							
28	3	119594-51290	GASKET, DELIVERY	6							
29	3	119595-51300	VALVE ASSY	6							
32	3	119595-51330	SPRING	6							
33	3	119595-51341	DAMPING VALVE ASSY	6							
40	3	119000-51410	O-RING S18	12							
41	3	119595-51410	JOINT	1							
42	3	129155-51410	CHECK BOLT,DEFLECTOR	1							
43	3	119594-51451	SHIM SET, CAMSHAFT	1							
48	3	119593-51500	RACK, CONTROL	1							
49	3	119000-51511	SLEEVE, CONTROL	6							
50	3	119593-51520	WASHER	1							
51	3	119593-51530	SPRING	1							
52	3	119000-51550	COVER, RACK	1							
53	3	119000-51570	GUIDE, RACK	2							
54	3	119000-51580	SCREW A, GUIDE CAP	1							
55	3	119000-51590	SCREW B, GUIDE CAP	1							
56	3	119000-51650	SHIM SET, ADJUSTING	12							
57	3	144626-51680	O-RING	6							
58	3	121850-51700	BUSHING, OIL FEED	1							
59	3	119000-51800	BOLT,BARREL MOUNTING	12							
60	3	119594-51850	BEARING	1							
61	3	121952-51900	ADAPTER	1							
62	3	122780-51900	BOLT, AIR VENT	1							
63	3	121950-51910	PLUG, AIR VENT	1							
64	3	180110-51910	GASKET, PLUG	1							
65	3	144626-51950	O-RING 1016	2							
66	3	22190-060003	SEAL WASER 6	4							
67	3	22351-020008	SPRING PIN 2X 8	1							
68	3	22351-020012	SPRING PIN 2X 12	1							
69	3	23414-220029	GASKET 22	1							
70	3	24321-000800	O-RING 1A G-80.0	1							
71	3	24341-000160	O-RING 1A S-16.0	2							
72	3	24341-000260	O-RING 1A S-26.0	6							

Fig.27. FUEL INJECTION PUMP

Y00R5151

Fig. **27** FUEL INJECTION PUMP



(A)=6LY2(A-STE(P
(B)=
(C)=

(D)=
(E)=
(F)=

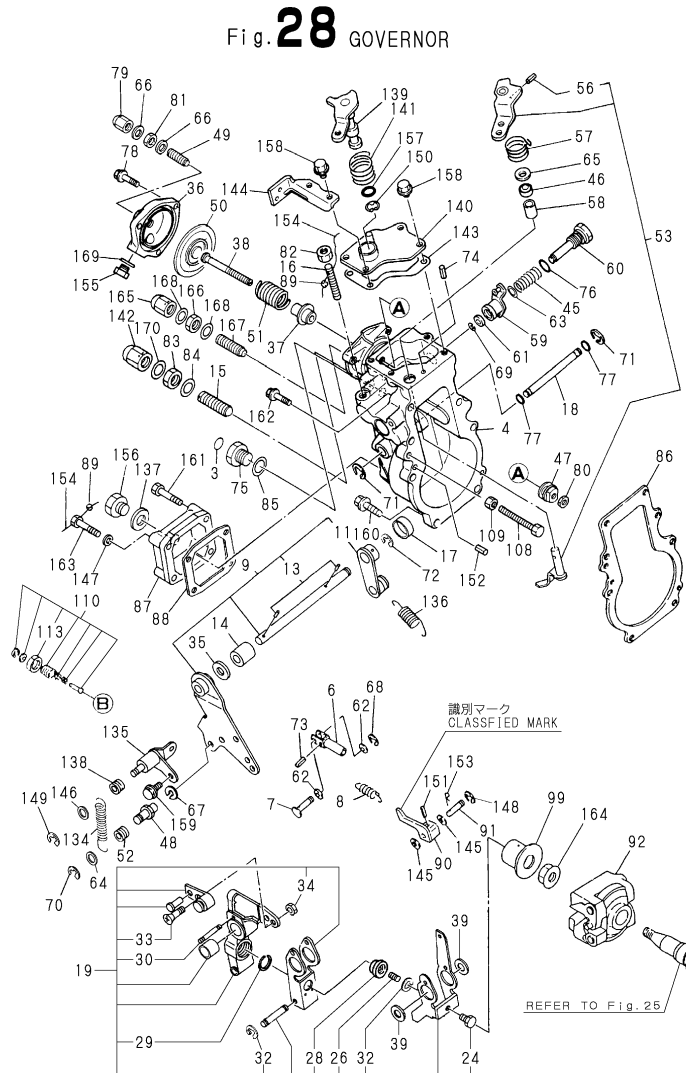
REF.	LEV.	PARTS NO.	DESCRIPTION	QTY						I	R
				(A)	(B)	(C)	(D)	(E)	(F)		
73	3	24341-000560	O-RING 1A S-56.0	1							
74	3	26106-060142	BOLT M 6X 14 PLATED	12							
75	3	119594-51070	BOLT	4							
76	3	26216-060162	STUD M 6X 16 PLATED	3							
77	3	26366-080002	NUT M 8	12							
78	3	26450-060402	BOLT M 6X 40	2							
80	2	127691-52010	FUEL FEED PUMP	1							

Remarks

(1) GOVERNOR ASSY(FIG28) AND FUEL FEED PUMP ASSY(FIG29) IS INCORPORATED IN THIS FUEL INJECTION PUMP ASSY.(REF NO.1)

Fig.28. GOVERNOR

Y00R5151



- Remarks
 (1)PITCH 51
 (2)PITCH 52
 (3)PITCH 53
 (4)PITCH 51.5
 (5)PITCH 52.5
 (6)PITCH 53.5

(A)=6LY2(A-STE(P
 (B)=
 (C)=

(D)=
 (E)=
 (F)=

REF.	LEV.	PARTS NO.	DESCRIPTION	Q'TY						I	R
				(A)	(B)	(C)	(D)	(E)	(F)		
3	3	124610-51970	LABEL	1							
4	3	119573-61010	CASE, GOVERNOR	1							
6	3	119000-61120	LINK	1							
7	3	119595-61170	PIN	1							
8	3	119187-61190	SPRING	1							
9	3	119173-61400	LEVER ASSY,	1							
11	4	120323-61420	SPRING LEVER, GOV.	1							
13	4	22322-030220	TAPER PIN 3X22	2							
14	3	120323-61430	BUSH	2							
15	3	127695-61450	BOLT, FUEL CONTROL	1							
16	3	121850-61470	BOLT, CONTROL	1							
17	3	129795-61470	PLUG 20,BORE	1							
18	3	119000-61490	SHAFT, GOV. LEVER	1							
19	3	119594-61500	LEVER ASSY, GOVERNOR	1							
24	4	127495-61540	SHIFTER	1							
26	4	119594-61600	SPRING	1							
28	4	119187-61911	RETAINER	1							
29	4	119187-61920	CIRCLIP	1							
30	4	119187-61930	PIN	1							
32	4	22272-000040	CIRCLIP E- 4	5							
33	4	26577-060162	SCREW M 6X 16	1							
34	4	26757-060002	NUT M 6	1							
I 34-1	4	26716-060002	NUT 6	1							R
		(A=E/#50595)									
35	3	120320-61540	SEAL SC102004	1							
36	3	129595-61600	CASE	1							
37	3	129595-61610	BUSH	1							
38	3	129595-61620	ROD	1							
39	3	119000-61630	SHIM PACK	1							
45	3	119593-61650	SPRING	1							
46	3	148616-61650	OIL SEAL VC081404	1							
47	3	127495-61660	RING	1							
48	3	121850-61670	BOLT (B), SPRING	1							
49	3	129595-61670	BOLT	1							
50	3	129595-61680	DIAPHRAGM	1							
51	3	119593-61760	DIAPHRAGM SPRING	1							
52	3	144626-61781	PIECE, SPRING	1							
53	3	119593-61800	LEVER	1							
56	4	22351-030016	SPRING PIN 3X16	1							
57	3	119593-61830	SPRING	1							
58	3	127695-61840	BUSH	1							
59	3	119594-61850	LEVER	1							
60	3	119593-61860	SHAFT	1							
61	3	119593-61890	INTERMEDIATE	1							
62	3	22117-050000	WASHER 5	2							
63	3	22117-080000	WASHER 8	1							
64	3	22117-080000	WASHER 8	1							
65	3	22137-080000	WASHER 8, POLISHED	1							
66	3	22190-080000	SEAL WASHER 8(BOLT)	2							
67	3	22217-080000	SPRING WASHER 8	1							
68	3	22272-000040	CIRCLIP E- 4	1							

Fig.28. GOVERNOR

Y00R5151

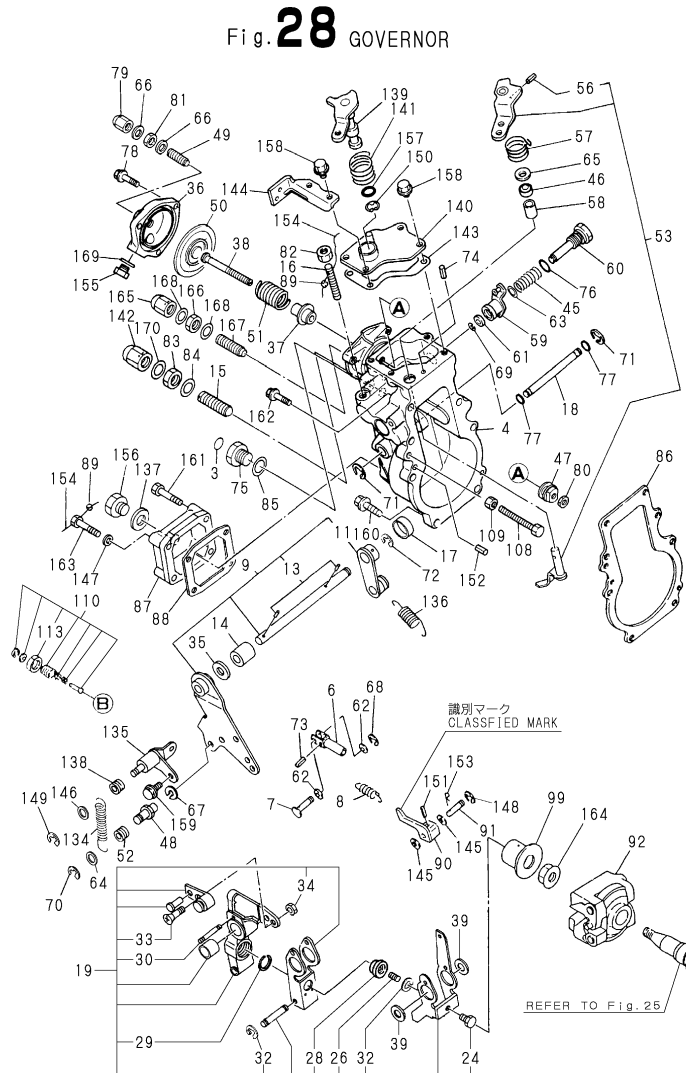


Fig. 28 GOVERNOR

- Remarks
 (1)PITCH 51
 (2)PITCH 52
 (3)PITCH 53
 (4)PITCH 51.5
 (5)PITCH 52.5
 (6)PITCH 53.5

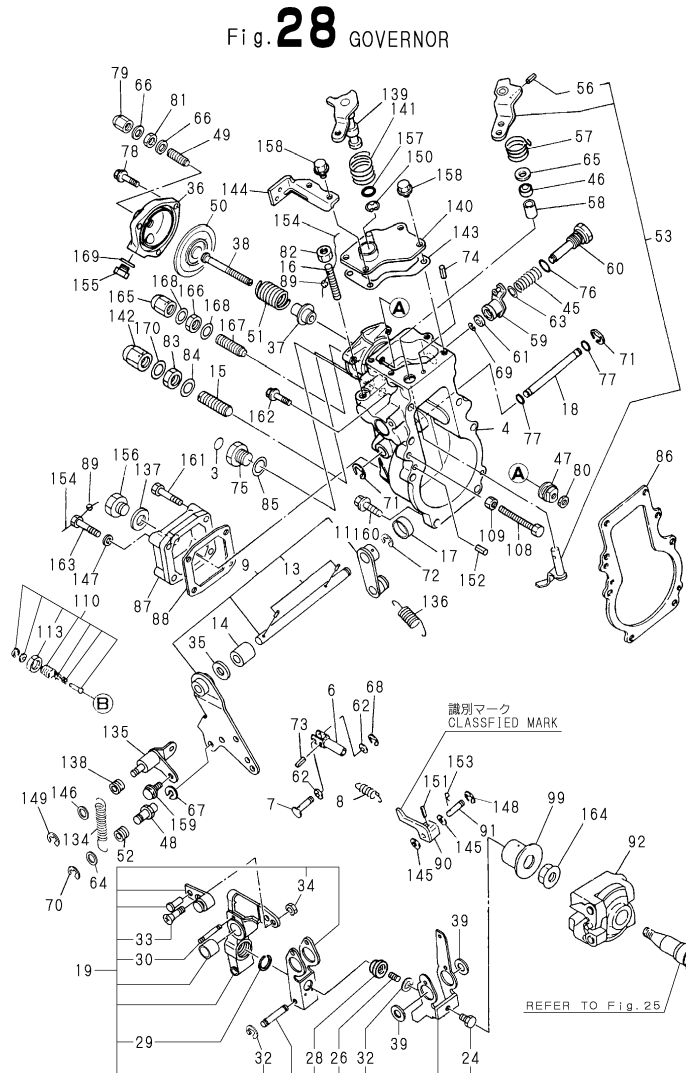
(A)=6LY2(A-STE(P
 (B)=
 (C)=

(D)=
 (E)=
 (F)=

REF.	LEV.	PARTS NO.	DESCRIPTION	Q'TY						I	R
				(A)	(B)	(C)	(D)	(E)	(F)		
69	3	22272-000060	CIRCLIP E- 6	1							
70	3	22272-000060	CIRCLIP E- 6	1							
71	3	22272-000080	CIRCLIP E- 8	2							
72	3	22272-000080	CIRCLIP E- 8	1							
73	3	22351-030016	SPRING PIN 3X16	1							
74	3	22492-060362	PIN 6X 36	1							
75	3	23887-160002	PLUG 16,HEX.	1							
76	3	24311-000120	O-RING 1A P 12.0	1							
77	3	24341-000080	O-RING 1A S-8.0	2							
78	3	26106-060182	BOLT M 6X 18 PLATED	3							
79	3	26667-080002	CAP NUT M 8	1							
80	3	26756-060002	LOCK NUT 6	1							
81	3	26756-080002	LOCK NUT M 8 PLATED	1							
82	3	26756-080002	LOCK NUT M 8 PLATED	1							
83	3	26777-120002	NUT 12	1							
84	3	22190-120002	SEAL WASHER 12	1							
85	3	22190-160002	SEAL WASHER 16S	1							
86	2	119000-61052	GASKET, GOV. CASE	1							
87	2	119187-61071	HOUSING, GOVERNOR.	1							
88	2	127695-61071	GASKET	1							
89	2	135210-61090	LEAD	3							
90A	2	119593-61100	LINK	1							1
90B	2	119593-61110	LINK	1							2
90C	2	119593-61120	LINK	1							3
90D	2	119593-61130	LINK (RACK. 10.5	1							4
90E	2	119593-61140	LINK (RACK. 11.5	1							5
90F	2	119593-61150	LINK (RACK. 12.5	1							6
91	2	119000-61180	PIN, LINK	1							
92	2	119173-61200	WEIGHT ASSY, GOV.	1							
99	2	119187-61300	SLEEVE ASSY	1							
108	2	171353-61460	BOLT, IDLE LIMIT	1							
109	2	119000-61470	NUT	1							
110	2	120324-61551	ANGLEICH ASSY	1							
113	3	124616-61580	NUT	1							
134	2	119173-61651	SPRING	1							
135	2	119173-61660	SUPPORT	1							
136	2	119588-61700	SPRING,GOVERNOR	1							
I 136-1	2	119594-61700	SPRING	1							N
(A=*2000.04)											
137	2	22190-120002	SEAL WASHER 12	1							
138	2	144626-61781	PIECE, SPRING	1							
139	2	119593-61900	LEVER	1							
140	2	119593-61910	COVER	1							
141	2	119593-61920	SPRING	1							
142	2	129100-61930	NUT, CAP	1							
143	2	127695-61961	GASKET	1							
144	2	119593-61990	BRACKET	1							
145	2	22117-050000	WASHER 5	2							
146	2	22117-080000	WASHER 8	1							
147	2	22217-060000	SPRING WASHER 6	1							
148	2	22272-000040	CIRCLIP E- 4	1							

Fig.28. GOVERNOR

Y00R5151



- Remarks
 (1)PITCH 51
 (2)PITCH 52
 (3)PITCH 53
 (4)PITCH 51.5
 (5)PITCH 52.5
 (6)PITCH 53.5

(A)=6LY2(A-STE(P

(B)=

(C)=

(D)=

(E)=

(F)=

REF.	LEV.	PARTS NO.	DESCRIPTION	QTY						I	R
				(A)	(B)	(C)	(D)	(E)	(F)		
149	2	22272-000060	CIRCLIP E- 6	1							
150	2	22272-000100	CIRCLIP E-10	1							
151	2	22351-030025	SPRING PIN 3X25	1							
152	2	22351-050020	SPRING PIN 5X20	2							
153	2	22372-050000	SNAP PIN JASO 5	1							
154	2	22453-060000	WIRE 0.6	3							
155	2	23887-100002	PLUG 10	1							
156	2	23887-120002	PLUG 12,HEX.	1							
157	2	24311-000110	O-RING 1A P-11.0	1							
158	2	26106-060122	BOLT M 6X 12 PLATED	4							
159	2	26106-060122	BOLT M 6X 12 PLATED	1							
160	2	26106-060222	BOLT M 6X 22 PLATED	6							
161	2	26106-060302	BOLT M 6X 30 PLATED	3							
162	2	26106-060402	BOLT M 6X 40 PLATED	1							
163	2	26116-060306	BOLT M 6X 30 PLATED	1							
164	2	26376-120002	U-NUT M12	1							
165	2	26667-080002	CAP NUT M 8	1							
166	2	26756-080002	LOCK NUT M 8 PLATED	1							
167	2	26911-080402	SCREW	1							
168	2	22190-080002	SEAL WASHER 8S	2							
169	2	22190-100002	SEAL WASHER 10S	1							
170	2	22190-120002	SEAL WASHER 12	1							

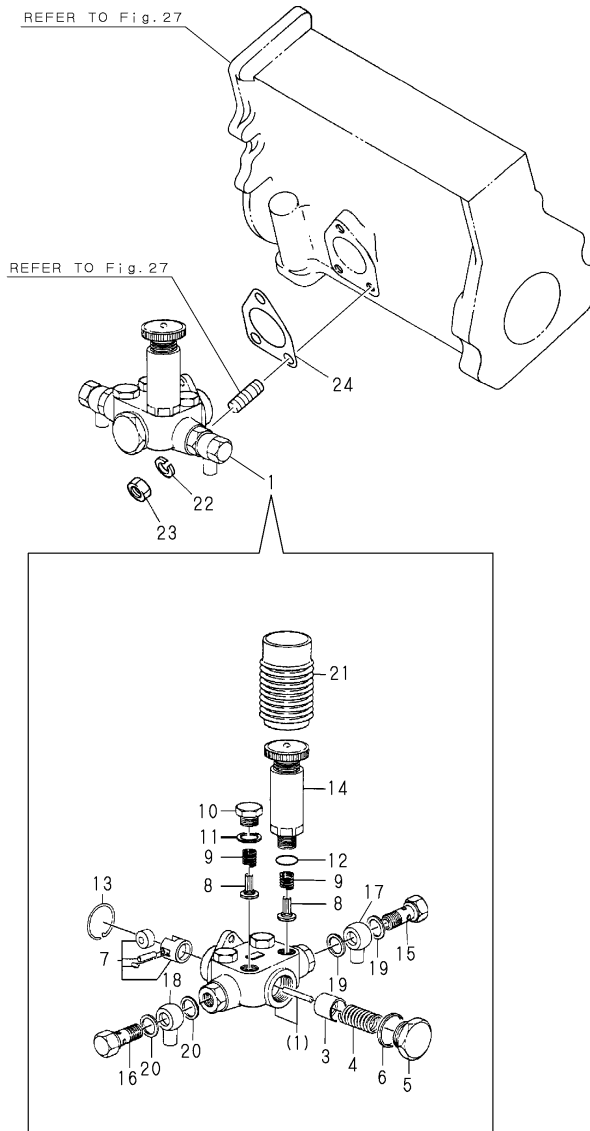
Fig.29. FUEL FEED PUMP

(A)=6LY2(A-STE(P)
(B)=
(C)=

(D)=
(E)=
(F)=

Y00R5151

Fig. 29 FUEL FEED PUMP



REF.	LEV.	PARTS NO.	DESCRIPTION	QTY						I	R
				(A)	(B)	(C)	(D)	(E)	(F)		
1	1	127691-52010	FUEL FEED PUMP	1							
3	2	X1521001120	PISTON	1							
4	2	X1521021300	SPRING, PISTON	1							
5	2	X1521051500	PLUG	1							
6	2	X0293326030	GASKET	1							
7	2	X1521114020	TAPPET	1							
8	2	X1521150500	VALVE	4							
9	2	X1521160200	SPRING	4							
10	2	X1521170100	PLUG	3							
11	2	X0293316030	GASKET	3							
12	2	X0296316060	O-RING	1							
13	2	X1521210400	RING, SNAP	1							
14	2	X1522006720	PRIMING PUMP	1							
15	2	X1523005920	BOLT	1							
16	2	X0297314680	EYE BOLT	1							
17	2	X0271141040	JOINT	1							
18	2	X0271141040	JOINT	1							
19	2	X0293314230	GASKET	2							
20	2	X0293314230	GASKET	2							
21	2	X1523200100	COVER	1							
22	1	22217-060000	SPRING WASHER 6	3							
23	1	26716-060002	NUT 6	3							
24	1	124410-51861	GASKET, (NON-ASB.)	1							

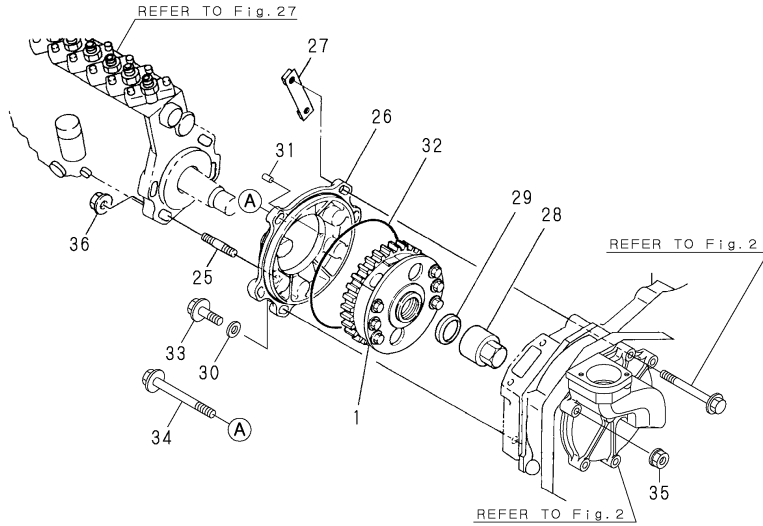
Fig.30. TIMER

(A)=6LY2(A-STE(P
(B)=
(C)=

(D)=
(E)=
(F)=

Y00R5151

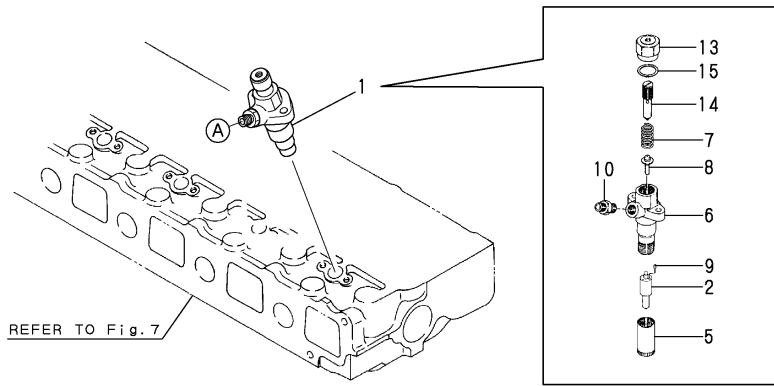
Fig. 30 TIMER



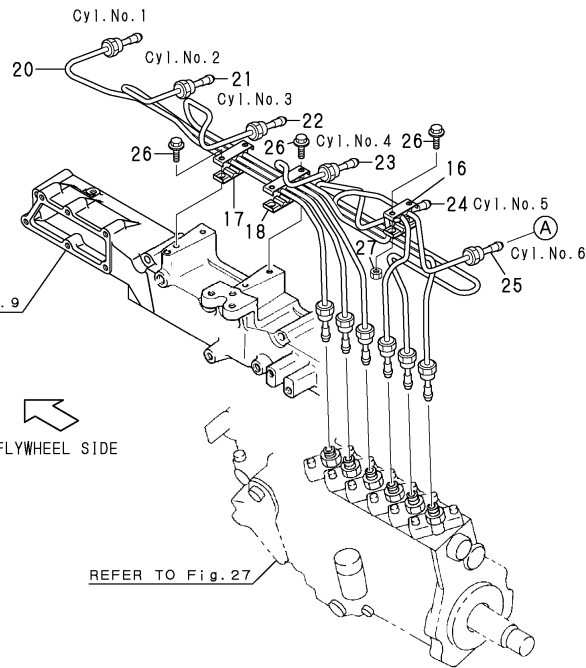
REF.	LEV.	PARTS NO.	DESCRIPTION	Q'TY						I	R
				(A)	(B)	(C)	(D)	(E)	(F)		
1	1	719595-54801	TIMER ASSY	1							
25	1	121850-01900	STUD M10X 32	4							
26	1	119594-25911	BRACKET	1							
27	1	119000-25920	RETAINER	1							
28	1	144606-54900	CAP NUT	1							
29	1	144606-54910	WASHER	1							
30	1	106100-55800	WASHER	3							
31	1	22351-050012	PIN 5X12,SPRING	1							
32	1	24341-001350	O-RING 1A S-135.0	1							
33	1	26106-080252	BOLT M 8X 25 PLATED	2							
34	1	26106-081202	BOLT M 8X120 PLATED	1							
35	1	26366-080002	NUT M 8	1							
I 35-1	1	26306-080002	NUT	1							N
		(A=E/#50655)									
36	1	26366-100002	NUT M10	4							
I 36-1	1	26306-100002	NUT	4							N
		(A=E/#50655)									

Fig.31. F.I.VALVE & F.I.PIPE

P/C NEWS No:Y00R5151-7
PUBLISHED:2005/9



REFER TO Fig.7



REFER TO Fig.9

FLYWHEEL SIDE

REFER TO Fig.27

(A)=6LY2(A-STE(P)
(B)=
(C)=

(D)=
(E)=
(F)=

REF.	LEV.	PARTS NO.	DESCRIPTION	Q'TY						I	R
				(A)	(B)	(C)	(D)	(E)	(F)		
1	1	719575-53100	VALVE ASSY,F.INJECT.	6							
I	1A	1	719575-53100	VALVE ASSY,F.INJECT.	6						1
I	1A-1	1	719575-53200	VALVE ASSY,F.INJECT.	6						S 1
(A=*2001.11)											
2	2	119575-53000	VALVE W/CASE,INJECT.	6							
I	2A	2	119575-53000	VALVE W/CASE,INJECT.	6						1
I	2A-1	2	119575-53050	NOZZLE ASSY	6						S 1
(A=*2001.11)											
5	2	120323-53080	CAP NUT	6							
6	2	120323-53100	HOLDER	6							
7	2	120323-53120	SPRING	6							
8	2	120323-53130	SEAT, SPRING	6							
9	2	103200-53210	KNOCK, VALVE	12							
10	2	119595-53300	JOINT CMP,F.I.PIPE	6							
13	2	120323-53410	CAP NUT	6							
14	2	120323-53440	ADJUSTING BOLT	6							
15	2	23414-140018	GASKET 14	6							
16	1	122780-59100	RETAINER	2							
17	1	123372-59100	CLAMP	2							
18	1	123472-59120	BRACKET	6							
20	1	119595-59711	PIPE,FUEL INJECTION	1							
21	1	119595-59721	PIPE,FUEL INJECTION	1							
22	1	119595-59731	PIPE,FUEL INJECTION	1							
23	1	119595-59741	PIPE,FUEL INJECTION	1							
24	1	119595-59750	PIPE,FUEL INJECTION	1							
25	1	119595-59762	PIPE,FUEL INJECTION	1							
26	1	26106-060202	BOLT M 6X 20 PLATED	10							
27	1	26366-060002	NUT M 6	5							

Remarks
(1)6LY2A-STP

Fig.32. FUEL PIPE & FUEL STRAINER

(A)=6LY2(A-STE(P

(B)=

(C)=

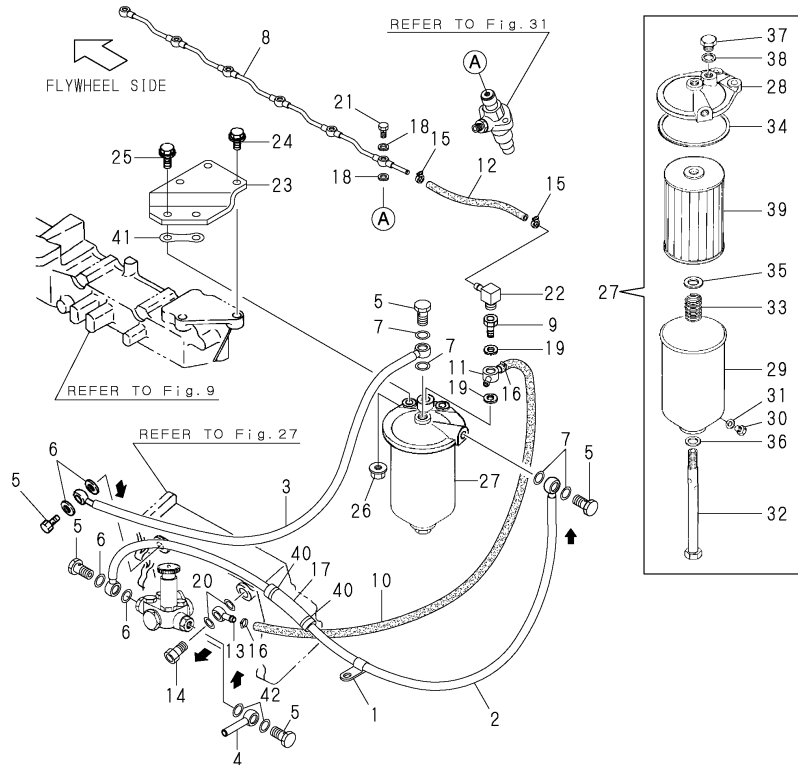
(D)=

(E)=

(F)=

Y00R5151

Fig. **32** FUEL PIPE & FUEL STRAINER



REF.	LEV.	PARTS NO.	DESCRIPTION	Q'TY						I	R
				(A)	(B)	(C)	(D)	(E)	(F)		
1	1	128377-59860	RETAINER	1							
2	1	119593-59132	PIPE, FUEL OIL	1							
3	1	119593-59141	PIPE, FUEL OIL	1							
4	1	123325-59420	PIPE ASSY	1							
5	1	148616-59430	BOLT M14, JOINT	5							
6	1	22190-140002	SEAL WASHER 14S	4							
7	1	22190-140002	SEAL WASHER 14S	4							
8	1	119595-59150	PIPE, FUEL INJECTION	1							
I	8-1	119595-59151	FO PIPE (RETURN)	1							R
(A=E/#50105)											
9	1	119593-59920	VALVE ASSY, CHECK	1							
10	1	119574-59512	PIPE, FUEL OIL	1							
11	1	119574-59980	JOINT, FUEL RETN. PIPE	1							
12	1	119187-59562	PIPE, FUEL OIL	1							
13	1	121750-59910	JOINT 14, PIPE	1							
14	1	119595-59950	VALVE ASSY, CHECK	1							
15	1	23000-016000	CLAMP 16	2							
16	1	23000-019000	CLAMP 19	2							
17	1	119575-59300	PROTECTOR (FOT	1							
18	1	22190-080002	SEAL WASHER 8S	12							
19	1	22190-140002	SEAL WASHER 14S	2							
20	1	22190-140002	SEAL WASHER 14S	2							
21	1	23857-030000	JOINT BOLT 3	6							
22	1	119593-59960	ELBOW	1							
23	1	119574-55650	BRACKET, FO FILTER	1							
24	1	26106-100222	BOLT M10X 22 PLATED	3							
25	1	26106-100302	BOLT M10X 30 PLATED	2							
26	1	26366-100002	NUT M10	2							
I	26-1	26306-100002	NUT	2							N
(A=E/#50655)											
27	1	41650-550310	STRAINER, FUEL	1							
28	2	123678-55700	COVER	1							
29	2	123678-55720	CASE	1							
30	2	123672-55750	PLUG	1							
31	2	123672-55760	GASKET	1							
32	2	123678-55770	BOLT, CENTER	1							
33	2	123678-55790	SPRING	1							
34	2	123678-55850	GASKET	1							
35	2	123678-55860	SPRING SEAT	1							
36	2	123678-55870	GASKET	1							
37	2	123678-55880	PLUG	1							
38	2	123678-55890	GASKET	1							
39	2	41650-550810	STRAINER	1							
40	1	121750-59890	CLAMP 140	2							
41	1	127610-55820	PAD	1							
42	1	23414-140000	GASKET 14, ROUND	2							

Fig.33. OIL/WATER SEPARATER(OPTIONAL)

(A)=6LY2(A-STE(P

(B)=

(C)=

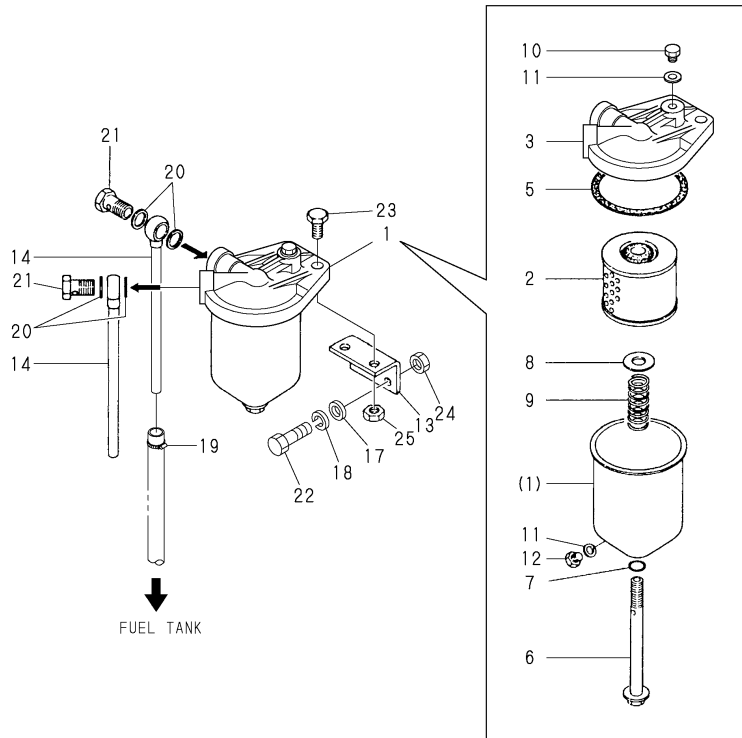
(D)=

(E)=

(F)=

Y00R5151

Fig. **33** OIL/WATER SEPARATER (OPTIONAL)



REF.	LEV.	PARTS NO.	DESCRIPTION	Q'TY						I	R
				(A)	(B)	(C)	(D)	(E)	(F)		
1	1	120324-55750	SEPARATOR	1							
2	2	120324-55760	ELEMENT,FUEL OIL	1							
3	2	X2740134001	COVER ASSY	1							
5	2	X0582810173	GASKET	1							
6	2	X0311121522	CENTER BOLT	1							
7	2	X0580121073	O-RING 1A P 12.0	1							
8	2	X0300120414	GASKET	1							
9	2	X0600160122	SPRING	1							
10	2	X0314080110	PLUG	1							
11	2	X0588080273	GASKET	2							
12	2	X0313080110	BOLT	1							
13	1	123672-55811	BRACKET	1							
14	1	123325-59420	PIPE ASSY	2							
17	1	22137-080000	WASHER 8, POLISHED	2							
18	1	22217-080000	SPRING WASHER 8	2							
19	1	23000-016000	CLAMP 16	2							
20	1	23414-140000	GASKET 14, ROUND	4							
21	1	23857-080000	JOINT BOLT 8	2							
22	1	26106-080402	BOLT M 8X 40 PLATED	2							
23	1	26106-100202	BOLT M10X 20 PLATED	2							
24	1	26366-080002	NUT M 8	2							
I 24-1	1	26306-080002	NUT	2							N
		(A=E/#50655)									
25	1	26706-100002	NUT M10	2							

Fig.34. ENGINE STOP DEVICE

(A)=6LY2(A-STE(P

(B)=

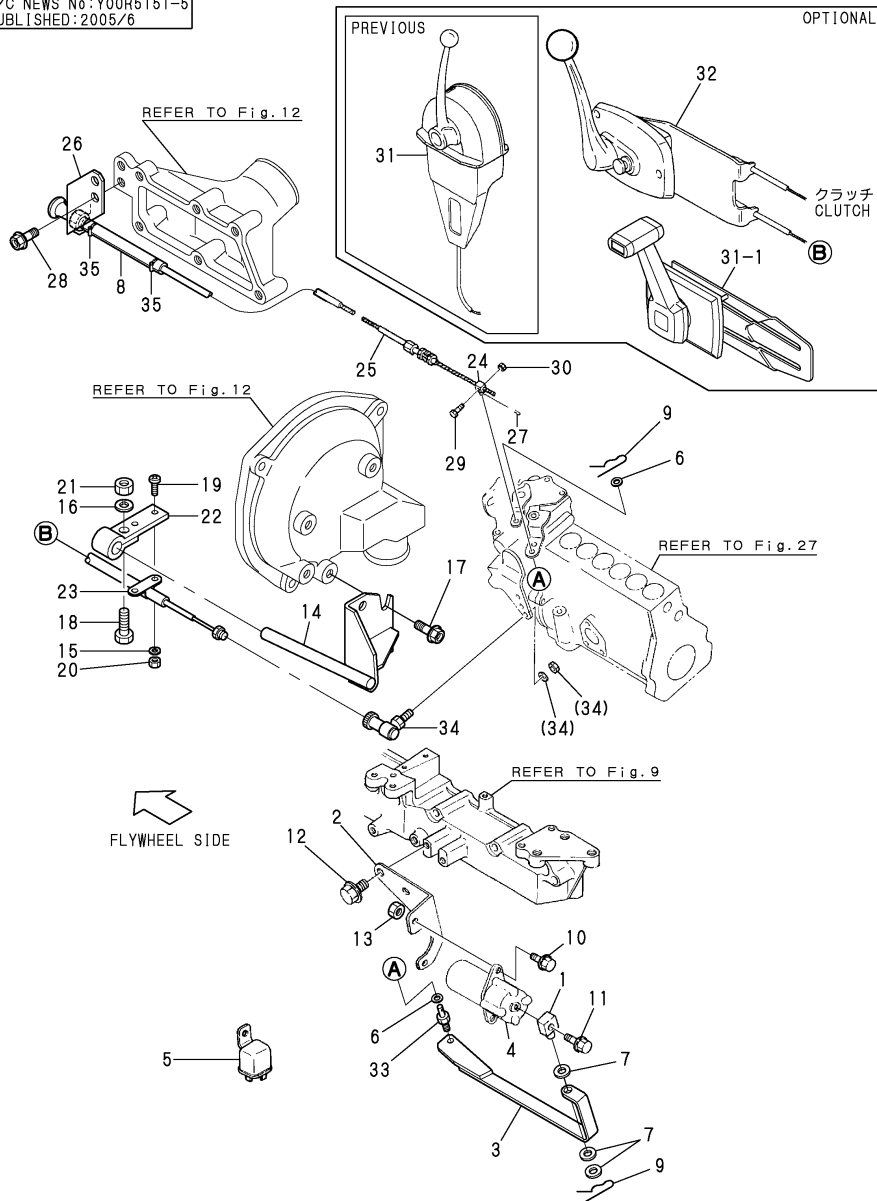
(C)=

(D)=

(E)=

(F)=

P/C NEWS No:Y00R6151-5
PUBLISHED:2005/6



REF.	LEV.	PARTS NO.	DESCRIPTION	QTY						I	R
				(A)	(B)	(C)	(D)	(E)	(F)		
1	1	171078-66551	PIN	1							
2	1	119588-67300	BRACKET	1							
2A	1	119574-67300	BRACKET	1							2
3	1	119588-67311	LINK	1							
4	1	129470-67320	ENGINE STOP SOLENOID	1							
5	1	119773-91850	RELAY	1							
6	1	22117-060000	WASHER 6	2							
7	1	22117-080000	WASHER 8	3							
8	1	119574-67450	COVER	1							
9	1	22360-080000	SNAP PIN 8	2							
10	1	26106-060102	BOLT M 6X 10 PLATED	2							
10A	1	26106-060122	BOLT M 6X 12 PLATED	2							2
11	1	26106-060202	BOLT M 6X 20 PLATED	1							
12	1	26106-080122	BOLT M 8X 12 PLATED	2							
12A	1	26106-080162	BOLT M 8X 16 PLATED	2							2
13	1	26366-060002	NUT M 6	1							
14	1	119574-67150	BRACKET,CONT. WIRE	1							
15	1	22217-050000	SPRING WASHER 5	2							
16	1	22217-080000	SPRING WASHER 8	1							
17	1	26106-080142	BOLT M 8X 14 PLATED	2							
18	1	26116-080202	BOLT M 8X 20 PLATED	1							
19	1	26557-050122	SCREW M 5X 12	2							
20	1	26716-050002	NUT M 5	2							
21	1	26716-080002	NUT M 8	1							
22	1	41701-001720	BRACKET	1							
23	1	41710-000410	CLAMP	1							
24	1	129590-67310	CLAMP	1							
I	25	1	119593-67400	WIRE	1						
26	1	119574-67901	BRACKET,WIRE	1							
27	1	22414-250150	COTTER PIN 2.5X15	1							
28	1	26106-080122	BOLT M 8X 12 PLATED	2							
29	1	26116-050142	BOLT M 5X 14 PLATED	1							
30	1	26756-050002	LOCK NUT M 5 PLATED	1							
31	1	128170-86500	MOUNT	1							1
31-1	1	128170-86501	REMOCON HEAD (MN)	1							S 1
		(A=*2002.4)									
32	1	41730-000681	MT-3 REMO-CON	1							1
33	1	120220-66250	PIN (A)	1							
34	1	41710-001300	JOINT	1							
35	1	23000-013000	CLAMP 13	2							

Remarks
(1)OPTIONAL
(2)6LY2A-STP

Fig.35. CLUTCH

OCR10-G51501 35. CLUTCH

(A)=6LY2(A-STE(P
(B)=
(C)=

(D)=
(E)=
(F)=

REF.	LEV.	PARTS NO.	DESCRIPTION	Q'TY						I	R
				(A)	(B)	(C)	(D)	(E)	(F)		
1	1	119593-85900	COUPLING	1							
2	1	26116-160452	BOLT M16X 45 PLATED	6							
3	1	26716-160002	NUT M16	6							
4	1	119575-08200	BRACKET,ENGINE REAR	1							
5	1	119575-08210	BRACKET,ENGINE REAR	1							
6	1	119575-08220	BOLT(BRACKET,ENGINE	8							
7	1	119575-49740	BEND,SEA WATER	2							
8	1	119575-85500	BRACKET,CLUTCH	1							
9	1	23000-054000	CLAMP 54	2							
10	1	26106-100142	BOLT M10X 14 PLATED	4							
11	1	26106-100282	BOLT M10X 28 PLATED	12							
12	1	26106-100302	BOLT M10X 30 PLATED	8							

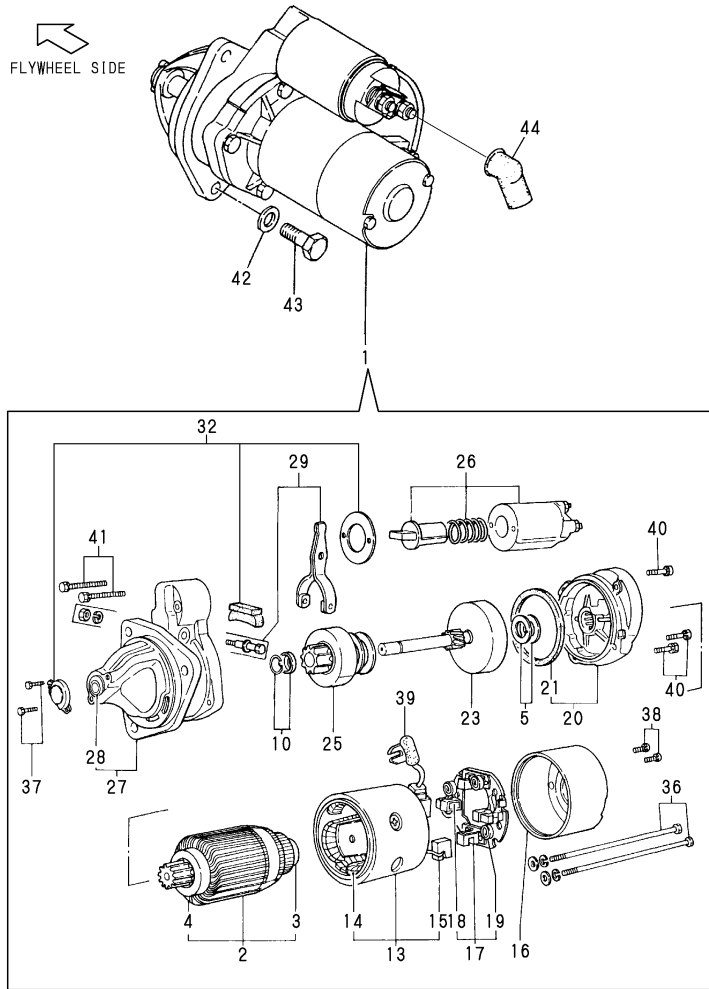
Remarks

THIS FIGURE ARE NOT ILLUSTRATED.

N:Old $\xrightarrow{\text{Yes}}$ New, Q:Old $\xrightarrow{\text{No}}$ New, R:Old $\xrightarrow{\text{Yes}}$ New, S:Old $\xrightarrow{\text{No}}$ New, W:Add, Z:Discontinued, F:Interchangeable by set, K:Q'ty Change

Fig.36. STARTING MOTOR

P/C NEWS No: Y00R5151-4
PUBLISHED: 2004/8



(A)=6LY2(A-STE(P
(B)=
(C)=

(D)=
(E)=
(F)=

REF.	LEV.	PARTS NO.	DESCRIPTION	QTY						I	R
				(A)	(B)	(C)	(D)	(E)	(F)		
1	1	124610-77010	STARTER	1							1
I	1-1	124610-77010	STARTER	1							N 2
		(A=*1995.12)									
I	1-2	124610-77019	STARTING MOTOR	1							N 3
		(A=E/#50105)									
I	2	121254-77401	ARMATURE, (NON-ASB.)	1							
I	2-1	121254-77402	ARMATURE ASSY	1							S
		(A=*1995.12)									
	3	121254-77410	BALL BEARING	1							
	4	121254-77420	BALL BEARING	1							
	5	121254-77430	WASHER KIT, THRUST	1							
	10	121254-77480	STOPPER KIT, PINION	1							
I	13	121254-77510	YORK ASSY	1							
I	13-1	121254-77511	COIL ASSY, FIELD	1							S
		(A=*1995.12)									
I	14	121254-77520	COIL ASSY, FIELD	1							
I	14-1	121254-77521	COIL ASSY, FIELD	1							S
		(A=*1995.12)									
I	15	121254-77540	BRUSH(+)	2							
I	15-1	121254-77541	BRUSH (+)	2							S
		(A=*1995.12)									
	16	124610-77550	REAR COVER ASSY	1							
I	17	121254-77570	HOLDER ASSY, BRUSH	1							
I	17-1	121254-77571	HOLDER	1							S
		(A=*1995.12)									
I	18	121254-77580	BRUSH (-)	2							
I	18-1	121254-77581	BRUSH	2							S
		(A=*1995.12)									
	19	121254-77590	SPRING, BRUSH	4							
I	20	X21304400	BEARING ASSY, CENTER	1							
I	20-1	121254-77600	BEARING ASSY, CENTER	1							N
		(A=*1995.12)									
I	21	119129-77210	SEAL, OIL	1							
I	21-1	121254-77610	SEAL, OIL	1							N
		(A=*1995.12)									
I	23	121254-77640	SHAFT ASSY, GEAR	1							M
I	23-1	X22501113	SHAFT ASSY, GEAR	1							
I	23-2	124610-77640	SHAFT ASSY, GEAR	1							N
		(A=*1995.12)									
I	25	121254-77661	PINION ASSY	1							M
I	25-1	X213035002	PINION ASSY	1							
I	25-2	124610-77660	PINION ASSY	1							N
		(A=*1995.12)									
I	26	X213017001	SWITCH ASSY, MAGNET.	1							
I	26-1	121254-77670	SWITCH, MAGNETIC	1							N
		(A=*1995.12)									
I	26-2	121254-77671	SWITCH, MAGNETIC	1							N
		(A=E/#50105)									
I	27	121254-77681	CASE ASSY, GEAR	1							M
I	27-1	X213046003	HOUSING ASSY, GEAR	1							
	28	121254-77690	METAL, GEAR CASE	1							

Remarks

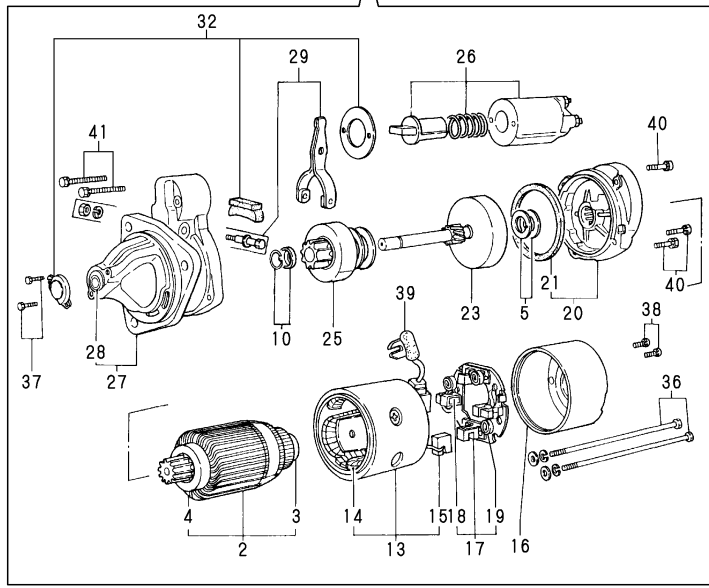
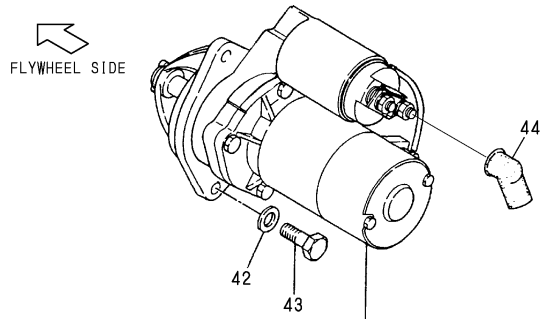
- (1)S13-68
- (2)S13-68A
- (3)S13-68C
- (M)MISPRINT:REFER TO THE NEXT ITEM.

Fig.36. STARTING MOTOR

P/C NEWS No: Y00R5151-4
PUBLISHED: 2004/8

(A)=6LY2(A-STE(P
(B)=
(C)=

(D)=
(E)=
(F)=



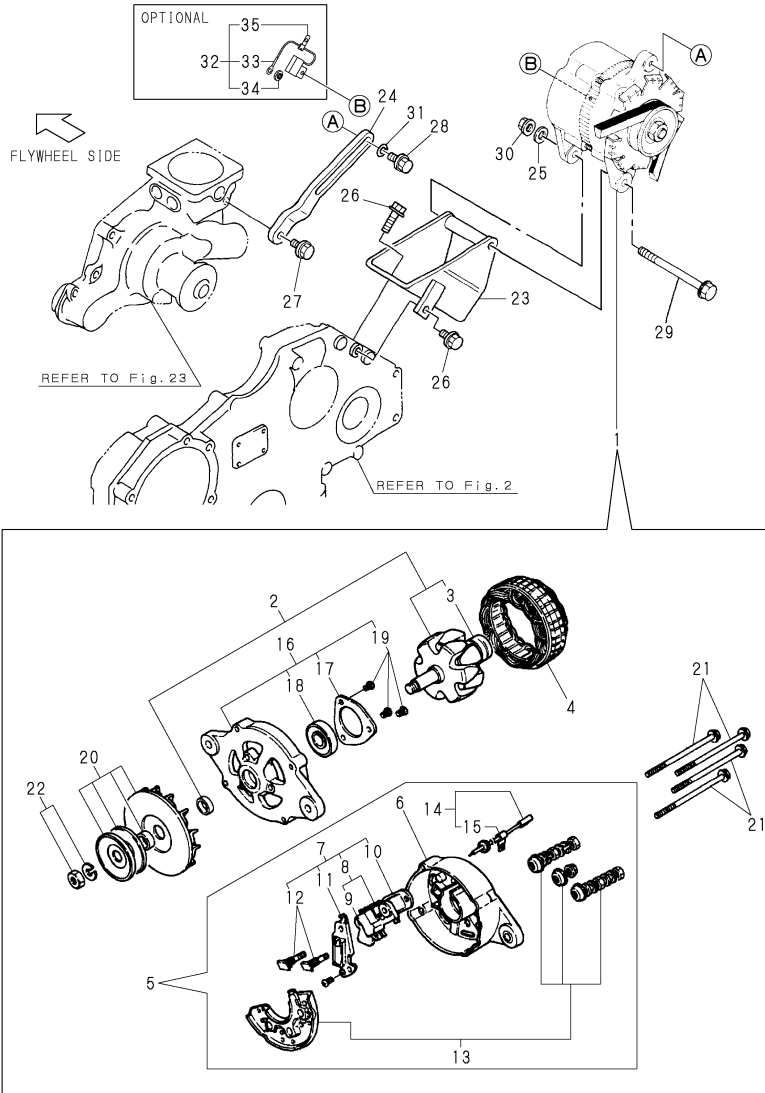
REF.	LEV.	PARTS NO.	DESCRIPTION	QTY						I	R	
				(A)	(B)	(C)	(D)	(E)	(F)			
I	28-1	3	124610-77690	METAL, GEAR CASE	1							N
			(A=*1995.12)									
	29	2	121254-77700	LEVER SET, SHIFT	1							
	32	2	121254-77730	DUST COVER SET	1							
	36	2	121254-77770	BOLT, THROUGH	2							
	37	2	121254-77780	SCREW 5	2							
	38	2	121254-77790	SCREW 4	2							
	39	2	121254-77810	TERMINAL COVER	1							
	40	2	26106-060302	BOLT M 6X 30 PLATED	3							
	41	2	26106-060452	BOLT M 6X 45 PLATED	2							
	42	1	22137-120000	WASHER 12,POLISHED	3							
	43	1	26116-120302	BOLT M12X 30 PLATED	3							
	44	1	124550-77030	COVER, TERMINAL	1							
	44-1	1	119773-77030	COVER	1							R
			(A=*2002.01)									

Remarks
 (1)S13-68
 (2)S13-68A
 (3)S13-68C
 (M)MISPRINT:REFER TO THE NEXT ITEM.

Fig.37. GENERATOR

Y00R5151

Fig. 37 GENERATOR



(A)=6LY2(A-STE(P

(B)=

(C)=

(D)=

(E)=

(F)=

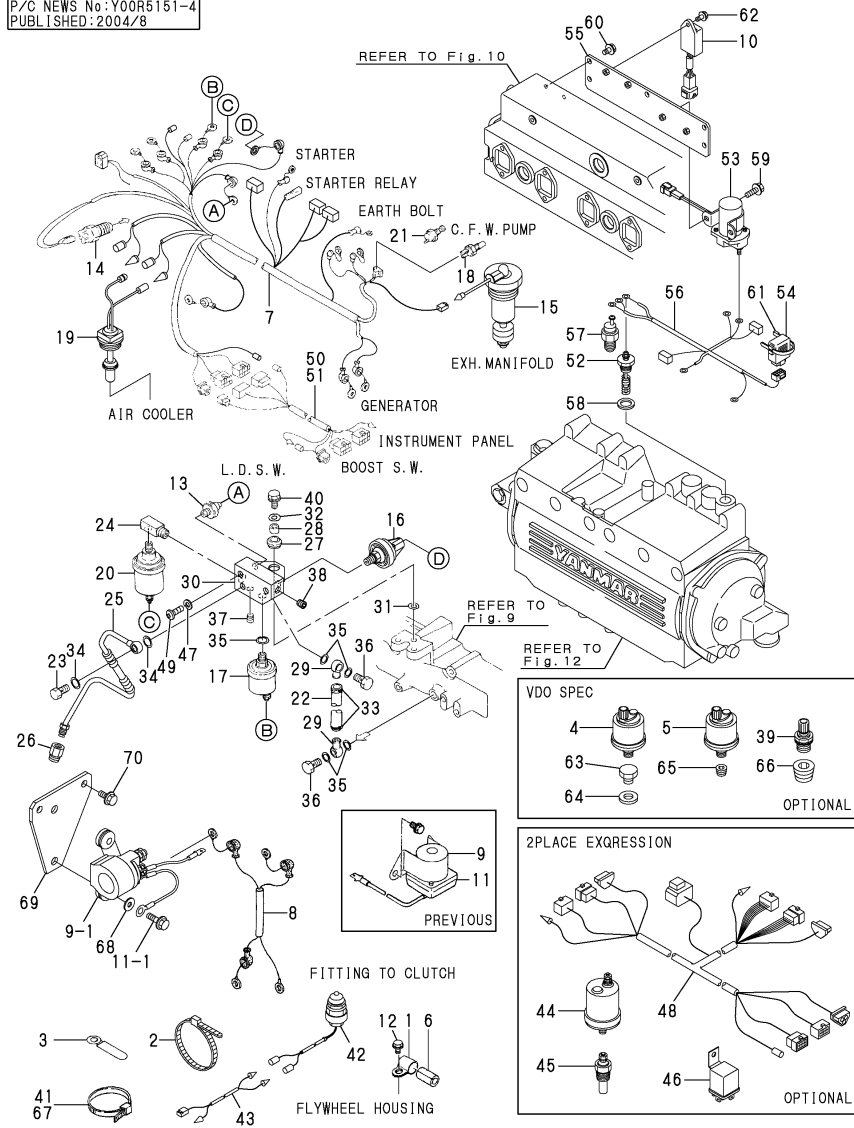
REF.	LEV.	PARTS NO.	DESCRIPTION	QTY						I	R
				(A)	(B)	(C)	(D)	(E)	(F)		
1	1	119573-77201	ALTERNATER(12V-80A	1							
2	2	XL180G61000	ROTOR ASSY	1							
3	3	119129-77320	BALL BEARING	1							
4	2	XL180120000	STARTER ASSY	1							
5	2	XL180G63006	COVER ASSY, REAR	1							
6	3	XL180G13012	COVER, REAR	1							
7	3	XL180G43150	BRUSH ASSY,REGULATOR	1							
8	4	XL155G1330	BRUSH ASSY	1							2
9	4	XL225G1325	BRUSH SET	2							
10	4	124080-77390	REGULATOR ASSY	1							
11	4	XL225431800	CONDENSER	1							
12	4	124080-77520	BOLT M5	2							
13	3	XL180832000	DIODE ASSY	1							
14	3	119129-77250	WIRE	1							
15	4	119129-77260	CLAMP,LEAD WIRE	1							
16	2	XL235340110	COVER ASSY, FRONT	1							
17	3	XL150M14041	RETAINER	1							
18	3	X6303BM0000	BALL BEARING	1							
19	3	119129-77930	SCREW KIT	1							
20	2	XL180G85001	PULLEY ASSY	1							
21	2	119129-77890	BOLT, THROUGH	4							
22	2	119129-77900	NUT ASSY, PULLEY	1							
23	1	119593-77300	BRACKET	1							
I	23-1	119593-77301	BRACKET,GENERATOR	1							N
(A=E/#50491)											
24	1	119593-77330	ADJUSTER BELT	1							
25	1	22137-100000	WASHER 10,POLISHED	1							
26	1	26106-080202	BOLT M 8X 20 PLATED	4							
27	1	26106-080222	BOLT M 8X 22 PLATED	1							
28	1	26106-080252	BOLT M 8X 25 PLATED	1							
29	1	26116-101202	BOLT M10X120 PLATED	1							
30	1	26366-100002	NUT M10	1							
I	30-1	26306-100002	NUT	1							N
(A=E/#50655)											
31	1	106100-55800	WASHER	1							
32	1	119573-77250	CONDENSER ASSY	1							1
33	2	119573-77260	CONDENSER	1							1
34	2	119573-77270	BUSH	2							1
35	2	129772-77280	CLAMP	1							1

Remarks

- (1)OPTIONAL
- (2)INC.9

Fig.38. WIRE HARNESS & SENSOR

P/C NEWS No:Y00R5151-4
PUBLISHED:2004/8



Remarks
 (1)OPTIONAL
 (2)OPTIONAL 12V
 (3)VDO SPEC. OPTIONAL
 (4)INTERCHANGEABLE BY SIMULTANEOUS REPLACEMENT WITH REF.NO.9-1,11-1, 68,69,70.

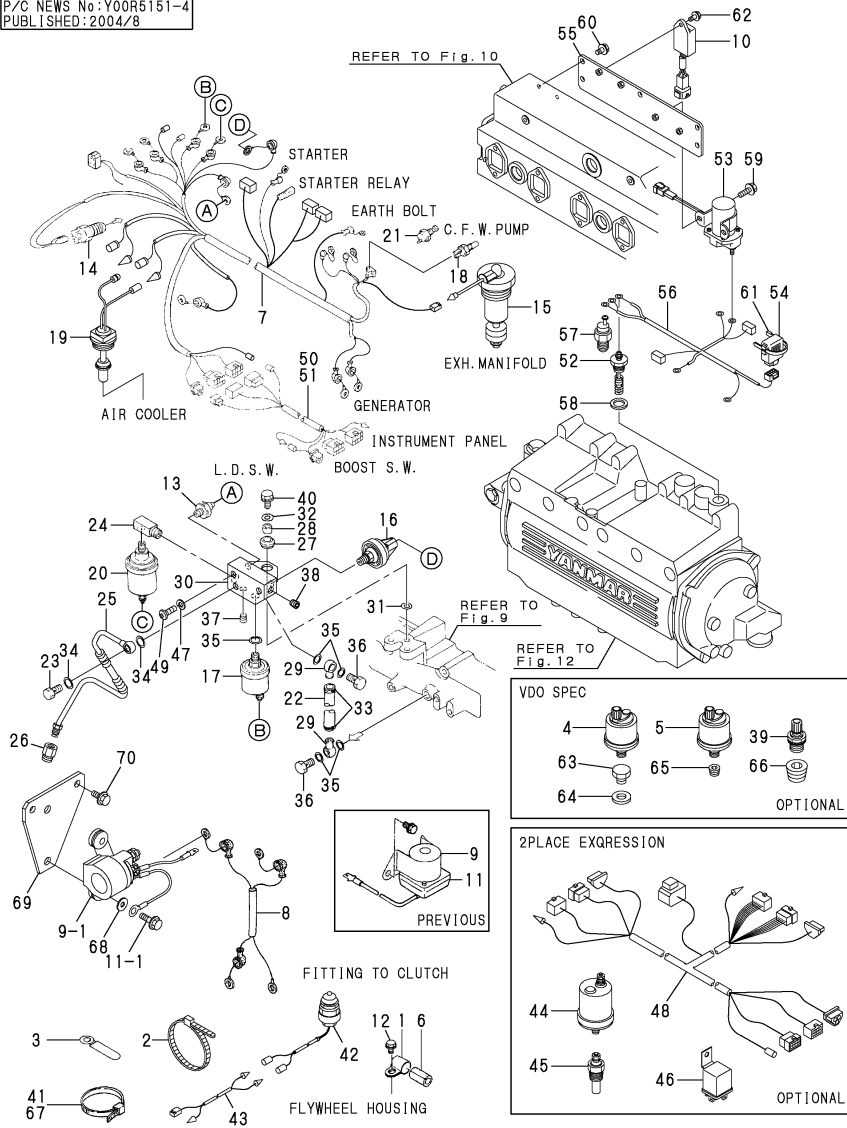
(A)=6LY2(A-STE(P
 (B)=
 (C)=

(D)=
 (E)=
 (F)=

REF.	LEV.	PARTS NO.	DESCRIPTION	QTY						I	R
				(A)	(B)	(C)	(D)	(E)	(F)		
1	1	124770-49310	RETAINER	1							
2	1	194250-51660	BAND 250	1							
2-1	1	194250-51660	BAND 250	2							K
(A=E/#50748)											
3	1	105430-67110	CLAMP	2							
3-1	1	105430-67110	CLAMP	5							K
(A=E/#50748)											
4	1	119773-91600	SENDER UNIT	1							3
5	1	119773-91650	SENDER UNIT	1							3
6	1	123682-77710	PROTECTOR	1							
7	1	119575-77812	WIRE HARNESS,ENGINE	1							
7-1	1	119575-77813	WIRE HARNESS,ENGINE	1							N
(A=E/#50748)											
8	1	119171-77850	WIRE HARNESS	1							
9	1	129490-77910	RELAY, STARTER	1							
I 9-1	1	119575-77510	RELAY, STARTER	1							F 4
(A=*2004.06)											
10	1	119773-91400	TIMER CONTROLER	2							
11	1	26106-060122	BOLT M 6X 12 PLATED	2							
I 11-1	1	26106-060202	BOLT M 6X 20 PLATED	2							F 4
(A=*2004.06)											
12	1	26106-080162	BOLT M 8X 16 PLATED	1							
13	1	124060-39452	SENDER,OIL PRESSURE	1							
14	1	128170-91160	SENSOR, TACHOMETER	1							
15	1	127695-91220	SWITCH	1							
16	1	119595-91290	SWITCH, PRESSURE	1							
17	1	119773-91300	SENDER	1							
17-1	1	119773-91301	SENDER	1							N
(A=E/#50491)											
18	1	127610-91350	SWITCH, THERMO	1							
19	1	129593-91420	SWITCH	1							
20	1	119773-91500	SENDER UNIT	1							
20-1	1	119773-91501	SENDER UNIT	1							N
(A=E/#50112)											
21	1	144626-91570	SENDER UNIT	1							
22	1	119574-18490	PIPE,BOOST SENDOR	1							
23	1	124160-39140	BOLT 10, PIPE JOINT	1							
24	1	123482-39670	DAMPER	1							
25	1	119595-39750	LOT	1							
25-1	1	119595-39751	LO PIPE CMP	1							N
(A=E/#50105)											
26	1	119574-39770	CONNECTOR	1							
27	1	105100-55501	GROMMET	3							
28	1	105100-55540	COLLAR, FUEL TANK	3							
29	1	101304-59020	JOINT 12, PIPE	2							
30	1	119574-91011	BRACKET,SENDER	1							
31	1	22137-080000	WASHER 8, POLISHED	3							
32	1	22157-080000	WASHER 8	3							
33	1	23000-013000	CLAMP 13	2							
34	1	23414-100000	GASKET 10, ROUND	2							
35	1	23414-120000	GASKET 12, ROUND	5							

Fig.38. WIRE HARNESS & SENSOR

P/C NEWS No:Y00R5151-4
PUBLISHED:2004/8



Remarks
 (1)OPTIONAL
 (2)OPTIONAL 12V
 (3)VDO SPEC. OPTIONAL
 (4)INTERCHANGEABLE BY SIMULTANEOUS REPLACEMENT WITH REF.NO.9-1,11-1, 68,69,70.

(A)=6LY2(A-STE(P

(B)=

(C)=

(D)=

(E)=

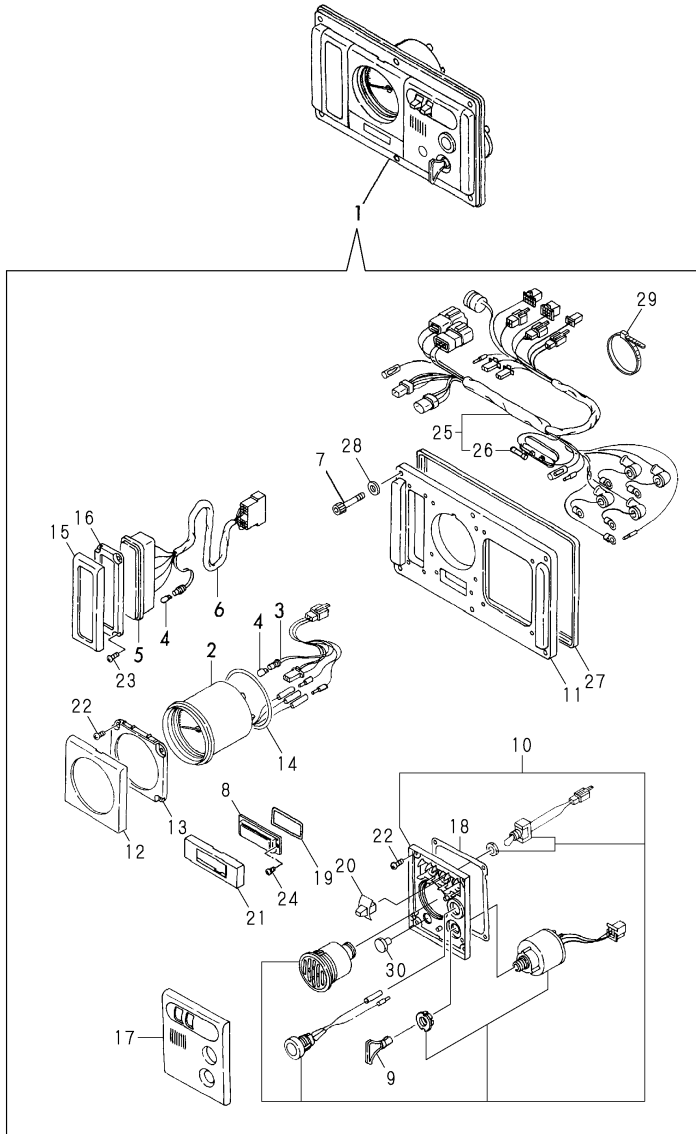
(F)=

REF.	LEV.	PARTS NO.	DESCRIPTION	Q'TY						I	R
				(A)	(B)	(C)	(D)	(E)	(F)		
36	1	23851-060000	JOINT BOLT 6	2							
37	1	23876-010000	PLUG PT1/8,SCREW	1							
38	1	23876-010000	PLUG PT1/8,SCREW	1							
39	1	119773-91700	SENDA UNIT	1							3
40	1	26106-080202	BOLT M 8X 20 PLATED	3							
41	1	121750-59890	CLAMP 140	2							1
42	1	120270-77101	SWITCH	1							1
43	1	119573-77850	HARNESS,WIRE	1							1
44	1	129574-91560	SENDER UNIT	1							1
44-1	1	129574-91561	SENDER UNIT	1							R 1
		(A=E/#50655)									
45	1	129574-91570	SENDER UNIT	1							1
46	1	119773-91850	RELAY	1							1
47	1	22217-050000	SPRING WASHER 5	1							
48	1	129574-77980	HARNESS.	1							2
49	1	26557-050082	SCREW M 5X 8	1							
50	1	129574-77710	HARNESS, WIRE(4M)	1							1
51	1	129574-77720	HARNESS, WIRE(6M)	1							1
52	1	119575-77050	PLUG,HEATER	2							
53	1	119575-77060	RELAY,HEATER	1							
54	1	119575-77070	CONTROLER	1							
54-1	1	119575-77071	CONTROLER	1							N
		(A=E/#50107)									
55	1	119575-77551	BRACKET,TIMER	1							
56	1	119575-77910	HARNESS,WIRE	1							
57	1	124616-91370	SWITCH, THERMO	1							
58	1	23414-200000	GASKET 20, ROUND	2							
59	1	26106-060122	BOLT M 6X 12 PLATED	2							
60	1	26106-080142	BOLT M 8X 14 PLATED	5							
61	1	29622-250001	BAND RF 250	2							
62	1	26106-060142	BOLT M 6X 14 PLATED	2							
63	1	23887-120002	PLUG M12,HEX.	1							W 3
		(A=E/#50122)									
64	1	23414-120000	GASKET 12, ROUND	1							W 3
		(A=E/#50122)									
65	1	23871-020000	PLUG PT1/4,SCREW	1							W 3
		(A=E/#50122)									
66	1	23871-030000	PLUG PT3/8,SCREW	1							W 3
		(A=E/#50122)									
67	1	121750-59890	CLAMP 140	4							W
		(A=E/#50748)									
I 68	1	183350-55130	WASHER	2							W 4
		(A=*2004.06)									
I 69	1	119575-77200	BRACKET,(RELAY	1							W 4
		(A=*2004.06)									
I 70	1	26106-060142	BOLT M 6X 14 PLATED	2							W 4
		(A=*2004.06)									

Fig.39. INSTRUMENT PANEL(B-TYPE)

Y00R5151

Fig. **39** INSTRUMENT PANEL (B-TYPE)



(A)=6LY2(A-STE(P

(B)=

(C)=

(D)=

(E)=

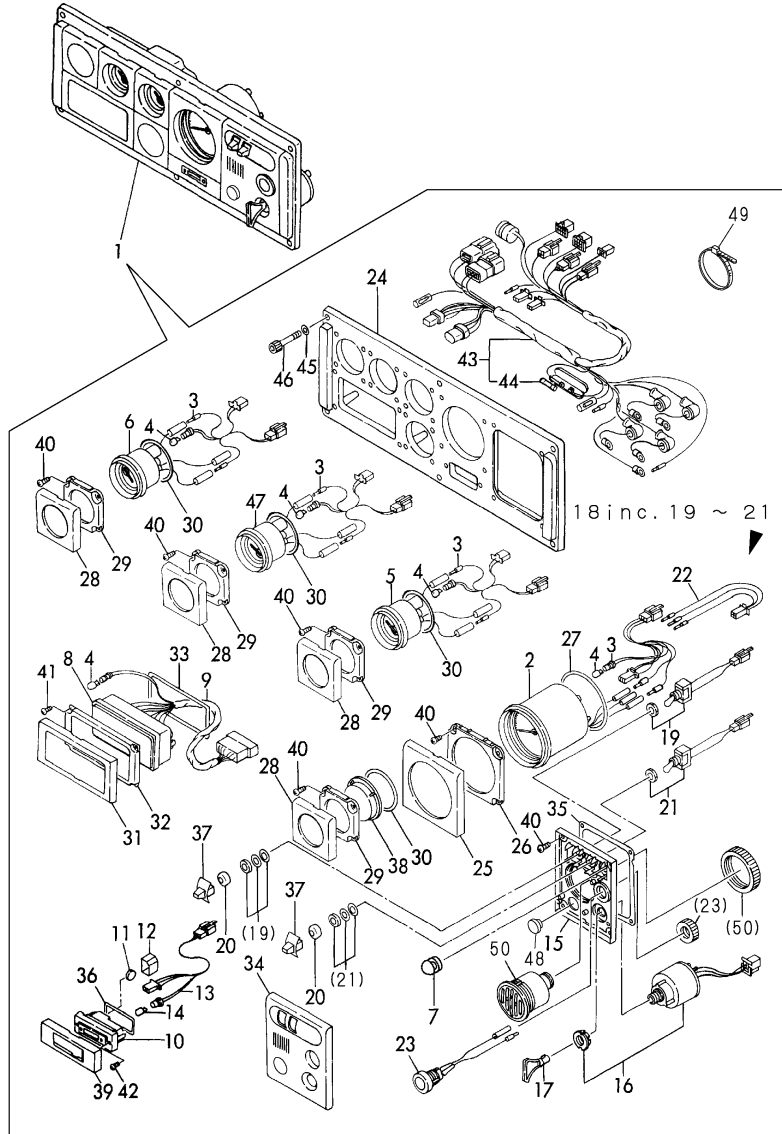
(F)=

REF.	LEV.	PARTS NO.	DESCRIPTION	Q'TY						I	R
				(A)	(B)	(C)	(D)	(E)	(F)		
1	1	119575-91131	IMSTRUMENT PANEL	1							
2	2	119573-91200	METER, TACHO./HOUR	1							
3	2	129574-91870	WIRE	1							
4	2	124617-91980	BULB	7							
5	2	119575-91261	PILOT BOX ASSY	1							
6	2	120130-91860	WIRE	1							
7	2	127687-91870	BOLT 6X 35	6							
8	2	129170-91650	COVER	1							
9	2	123482-91291	KEY, SWITCH	1							
10	2	129470-91191	BOX ASSY,SW	1							
11	2	128391-91930	PANEL	1							
12	2	129574-91620	COVER	1							
13	2	129574-91420	BRACKET	1							
14	2	129574-91720	GASKET	1							
15	2	128391-91640	COVER	1							
16	2	128391-91440	PLATE	1							
17	2	129170-91610	COVER	1							
18	2	129574-91710	GASKET	1							
19	2	129574-91750	GASKET	1							
20	2	129574-91770	KNOB	2							
21	2	129574-91650	COVER	1							
22	2	127692-91410	SCREW	8							
23	2	127692-91440	SCREW	4							
24	2	127692-91450	SCREW	2							
25	2	119575-91851	HARNESS, MAIN WIRE	1							
26	3	124617-91990	FUSE (3A)	1							
27	2	128391-91700	PACKING	1							
28	2	127687-91880	WASHER	6							
29	2	198451-78680	CLAMP,CORD	1							
30	2	129574-91760	BLIND	1							

Fig.41. INSTRUMENT PANEL(D-TYPE)

Y00R5151

Fig. 41 INSTRUMENT PANEL (D-TYPE)



(A)=6LY2(A-STE(P

(B)=

(C)=

(D)=

(E)=

(F)=

REF.	LEV.	PARTS NO.	DESCRIPTION	Q'TY						I	R
				(A)	(B)	(C)	(D)	(E)	(F)		
1	1	127675-91193	PANEL ASSY, INSTRUM	1							
2	2	119573-91200	METER, TACHO./HOUR	1							
3	2	129574-91870	WIRE	4							
4	2	124617-91980	BULB	12							
5	2	129574-91210	METER	1							
6	2	129574-91311	METER	1							
7	2	129170-91810	BLIND	1							
8	2	119189-91262	PILOT BOX ASSY	1							
9	2	129574-91862	WIRE ASSY	1							
10	2	129574-91240	CLOCK	1							
11	2	127620-91250	CELL	1							
12	2	129574-91490	HOLDER	1							
13	2	129574-91880	WIRE W/BULB	1							
14	2	120147-91760	BULB	1							
15	2	129574-91410	BRACKET	1							
16	2	121575-91250	SWITCH W/KEY	1							
17	2	123482-91291	KEY, SWITCH	1							
18	2	129470-91191	BOX ASSY,SW	1							
19	3	129170-91800	SWITCH	1							
20	3	129574-91780	CAP	2							
21	3	129574-91790	SWITCH	1							
22	2	129574-91890	WIRE	1							
23	2	129470-91190	STOPPER	1							
24	2	129574-91930	PANEL	1							
25	2	129574-91620	COVER	1							
26	2	129574-91420	BRACKET	1							
27	2	129574-91720	GASKET	1							
28	2	129574-91630	COVER	4							
29	2	129574-91430	BRACKET	4							
30	2	129574-91730	GASKET	4							
31	2	129574-91640	COVER	1							
32	2	129574-91440	BRACKET	1							
33	2	129574-91740	GASKET	1							
34	2	129170-91610	COVER	1							
35	2	129574-91710	GASKET	1							
36	2	129574-91750	GASKET	1							
37	2	129574-91770	KNOB	2							
38	2	129574-91600	BLIND	1							
39	2	129574-91650	COVER	1							
40	2	127692-91410	SCREW	24							
41	2	127692-91440	SCREW	4							
42	2	127692-91450	SCREW	2							
43	2	129574-91852	HARNASS,MAIN WIRE	1							
44	3	124617-91990	FUSE (3A)	1							
45	2	127687-91880	WASHER	6							
46	2	127687-91870	BOLT 6X 35	6							
47	2	129574-91221	METER	1							
48	2	129574-91760	BLIND	1							
49	2	198451-78680	CLAMP,CORD	3							
50	2	104271-91352	BUZZER	1							

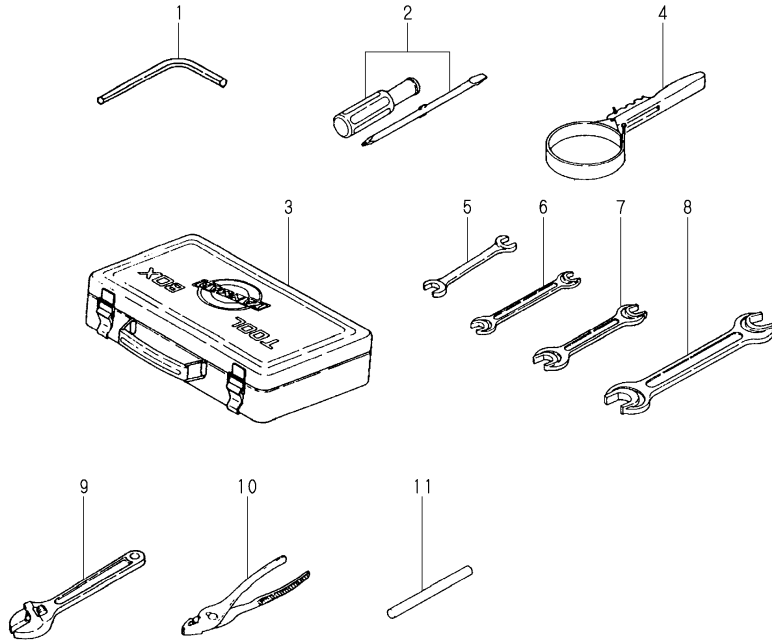
Fig.42. TOOL

(A)=6LY2(A-STE(P
(B)=
(C)=

(D)=
(E)=
(F)=

Y00R5151

Fig. **42** TOOL



REF.	LEV.	PARTS NO.	DESCRIPTION	Q'TY						I	R
				(A)	(B)	(C)	(D)	(E)	(F)		
1	1	177040-09050	WRENCH	1							
2	1	104200-92350	DRIVER, SCREW	1							
3	1	122210-92600	BOX, TOOL	1							
4	1	127610-92750	WRENCH, FILTER	1							
5	1	28110-100130	WRENCH 10X13	1							
6	1	28110-120140	WRENCH 12X14	1							
7	1	28110-170190	WRENCH 17X19	1							
8	1	28110-220240	WRENCH 22X24	1							
9	1	28120-002000	WRENCH 200,ADJUSTABL	1							
10	1	28170-001500	PLIERS 150	1							
11	1	28230-120300	HANDLE, TURN 12X300	1							

Part Number Index

All parts are stipulated in the order of part numbers.

(Depending on the area in which the part is used.)

This index will display the location of the part according to each part number.

PARTS No. INDEX

PARTS No.	Fig.	Ref.No.
101304-59020	38	29
103200-53210	31	9
104200-92350	42	2
104264-59030	10	17
104271-91352	40	44
	41	50
105100-55501	38	27
105100-55540	38	28
105430-67110	38	3
		3 -1
106100-55800	30	30
	37	31
119000-01740	2	3
119000-01771	2	4
119000-01840	1	10
119000-02410	1	6
119000-02450	13	2
119000-11180	7	46
119000-11230	7	31
119000-11260	7	34
119000-11270	7	35
119000-11280	7	36
119000-11290	7	37
119000-14100	13	4
119000-14200	13	6
119000-25920	30	27
119000-34030	16	29
119000-51161	27	17
119000-51170	27	18
119000-51181	27	19
119000-51410	27	40
119000-51511	27	49
119000-51550	27	52
119000-51570	27	53
119000-51580	27	54
119000-51590	27	55
119000-51650	27	56
119000-51800	27	59
119000-61052	28	86
119000-61120	28	6
119000-61180	28	91
119000-61470	28	109
119000-61490	28	18
119000-61630	28	39
119100-26200	22	6
119129-77210	36	21
119129-77250	37	14
119129-77260	37	15
119129-77320	37	3
119129-77890	37	21

PARTS No.	Fig.	Ref.No.
119129-77900	37	22
119129-77930	37	19
119171-11150	7	18
119171-14400	13	8
119171-34820	4	13
119171-77850	38	8
119173-03030	8	12
119173-11080	7	5
119173-11090	7	6
119173-11091	7	6 -1
119173-11101	7	14
119173-61200	28	92
119173-61400	28	9
119173-61651	28	134
119173-61660	28	135
119175-42620	22	5
119187-39700	18	25
119187-59562	32	12
119187-61071	28	87
119187-61190	28	8
119187-61300	28	99
119187-61911	28	28
119187-61920	28	29
119187-61930	28	30
119189-91262	40	8
	41	8
119285-11990	1	5 -1
119503-22300	15	9
119573-08200	5	11
119573-61010	28	4
119573-77201	37	1
119573-77250	37	32
119573-77260	37	33
119573-77270	37	34
119573-77850	38	43
119573-91200	39	2
	40	2
	41	2
119574-03120	8	17 -1
119574-03130	8	18 -1
119574-07400	6	15
119574-07450	6	7
119574-08200	5	3
119574-08210	5	4
119574-08230	5	2
119574-12110	9	1
119574-13110	10	1
119574-13250	11	45
		50
119574-13300	11	46

PARTS No.	Fig.	Ref.No.
119574-13300	11	51
119574-13500	11	47
119574-18050	11	29
119574-18102	12	1
119574-18120	12	12
119574-18170	12	27
119574-18180	12	28
119574-18290	11	33
119574-18480	9	7
119574-18490	38	22
119574-18700	12	30
119574-18750	12	2
119574-18760	12	3
119574-18770	12	4
119574-18780	12	5
119574-18790	12	6
119574-18800	12	20
119574-18810	12	7
119574-18820	12	11
119574-33011	16	1
119574-33050	16	8
119574-33150	16	7
119574-33170	16	4
119574-33180	16	3
119574-33600	16	9
119574-33621	16	10
119574-34810	4	12
119574-34861	4	14
119574-35150	16	17
119574-35200	43	11
119574-39051	17	15
119574-39111	17	17
119574-39120	17	27
119574-39152	17	18
119574-39200	16	22
	43	16
119574-39601	18	3
119574-39651	18	5
119574-39720	18	34
119574-39770	38	26
119574-39820	18	8
119574-42500	22	1
119574-42550	22	2
119574-42560	22	3
119574-42570	22	4
119574-44011	24	1
119574-44050	24	8
119574-44150	16	2
	24	2
119574-44160	24	7

PARTS No.	Fig.	Ref.No.
119574-44170	24	6
119574-44180	16	5
	24	5
119574-44190	24	4
119574-44200	24	3
119574-44600	24	9
119574-44621	24	10
119574-44630	24	11
119574-49050	25	1
119574-49061	25	2
119574-49070	25	3
119574-49080	25	4
119574-49150	26	1
119574-49160	26	2
119574-49231	26	3
119574-49250	26	4
119574-49270	26	5
119574-49300	26	11
119574-49321	26	9
119574-49400	26	12
119574-49420	26	13
119574-49700	25	8
119574-49711	25	9
119574-49751	11	48
119574-55650	32	23
119574-59512	32	10
119574-59980	32	11
119574-66160	16	6
119574-67150	34	14
119574-67300	34	2 A
119574-67450	34	8
119574-67901	34	26
119574-91011	38	30
119575-07510	6	14
119575-08200	35	4
119575-08210	35	5
119575-08220	35	6
119575-11100	7	14 -1
119575-11900	7	40 -1
119575-11910	7	41 -1
119575-11930	7	43 -1
119575-13300	11	52
119575-13320	11	54
119575-13330	11	55
119575-13340	11	56
119575-13350	11	57
119575-18011	11	1
119575-18020	11	1 -1
119575-21600	14	15 A-1
119575-35000	43	2

PARTS No. INDEX

PARTS No.	Fig.	Ref.No.
119575-35010	43	3
119575-35050	43	4
119575-35100	43	5
119575-35110	43	6
119575-35120	43	7
119575-35150	43	8
119575-35160	43	10
119575-35200	43	12
119575-35300	43	13
119575-35310	43	14
119575-49720	25	12
119575-49730	25	13
119575-49740	35	7
119575-53000	31	2
		2 A
119575-53050	31	2 A-1
119575-59300	32	17
119575-77050	38	52
119575-77060	38	53
119575-77070	38	54
119575-77071	38	54 -1
119575-77200	38	69
119575-77510	38	9 -1
119575-77551	38	55
119575-77812	38	7
119575-77813	38	7 -1
119575-77910	38	56
119575-85500	35	8
119575-91131	39	1
119575-91261	39	5
119575-91851	39	25
119578-28000	14	12 -1
119588-11310	8	2
119588-39750	18	33
119588-61700	28	136
119588-67300	34	2
119588-67311	34	3
119593-01200	1	27
119593-01601	3	1
119593-01731	4	5
119593-01751	1	34
119593-01760	1	39
119593-01801	1	28
119593-01811	1	29
119593-01860	7	11
119593-01870	1	4
119593-01880	1	5
119593-01911	2	8
119593-02070	1	16
119593-02120	1	44

PARTS No.	Fig.	Ref.No.
119593-02120	1	44 -1
119593-02130	1	47
		47 -1
119593-02170	1	50
		50 -1
119593-02180	1	53
		53 -1
119593-02420	1	7
119593-02500	1	44 A
119593-02600	1	50 A
119593-03093	8	16
119593-03100	8	9
119593-03120	8	17
119593-03130	8	18
119593-03140	8	19
119593-03200	8	10
119593-07200	7	47
119593-08400	5	8
119593-11110	7	15
119593-11240	7	28
119593-11250	7	33
119593-11300	7	22
119593-11301	7	22 -1
119593-11380	8	26
119593-12111	9	2
119593-13202	10	2
119593-13220	10	12
119593-18070	11	30
119593-18080	11	31
119593-18110	11	32
119593-18800	12	31
119593-18871	11	34
119593-18880	11	35
119593-21500	14	14
119593-21602	14	15
		15 A
119593-23200	15	15
119593-23400	15	18 A
119593-25051	13	10
119593-25060	13	11
119593-25110	13	14
119593-28060	14	12
119593-32001	17	3
119593-32500	17	4
119593-32530	17	7
119593-32700	17	8
119593-32710	17	9
119593-34001	16	27
119593-34020	16	37
119593-34870	4	15

PARTS No.	Fig.	Ref.No.
119593-35100	16	15
119593-35150	16	18
	43	9
119593-35161	16	19
119593-35191	17	11
119593-35400	16	20
119593-39150	17	19
119593-39401	18	19
119593-39450	18	2
		24
119593-39560	1	40
119593-39620	18	4
119593-39690	18	6
119593-42010	23	1
119593-42021	23	6
119593-42120	23	5
119593-42130	23	3
119593-42280	23	18
119593-42300	23	7
119593-44560	24	20
119593-49291	23	12
119593-49320	8	8
	26	10
119593-49530	23	13
119593-51080	27	9
119593-51090	27	10
119593-51500	27	48
119593-51520	27	50
119593-51530	27	51
119593-59132	32	2
119593-59141	32	3
119593-59920	32	9
119593-59960	32	22
119593-61100	28	90 A
119593-61110	28	90 B
119593-61120	28	90 C
119593-61130	28	90 D
119593-61140	28	90 E
119593-61150	28	90 F
119593-61650	28	45
119593-61760	28	51
119593-61800	28	53
119593-61830	28	57
119593-61860	28	60
119593-61890	28	61
119593-61900	28	139
119593-61910	28	140
119593-61920	28	141
119593-61990	28	144
119593-67400	34	25

PARTS No.	Fig.	Ref.No.
119593-77300	37	23
119593-77301	37	23 -1
119593-77330	37	24
119593-77460	26	17
119593-85900	35	1
119594-25911	30	26
119594-51070	27	75
119594-51290	27	28
119594-51451	27	43
119594-51850	27	60
119594-61500	28	19
119594-61600	28	26
119594-61700	28	136 -1
119594-61850	28	59
119595-01350	1	26
119595-01510	2	1
119595-01800	2	5
119595-01930	2	10
119595-01950	2	11
119595-07360	6	16
119595-11180	7	20
119595-11370	7	23
119595-11910	7	24
119595-11920	7	25
119595-11930	7	43
119595-14000	13	1
		1 A
119595-14050	13	1 A-1
119595-14200	13	7
119595-18250	12	29
119595-18600	12	13
119595-21200	14	4
119595-21300	14	7
119595-21650	14	10
119595-21651	14	10 -1
119595-22300	15	3
119595-23310	15	18
119595-23320	15	20
119595-25100	13	12
119595-39580	1	43
119595-39700	18	7
119595-39750	38	25
119595-39751	38	25 -1
119595-44600	10	13
119595-44700	10	15
119595-44801	10	16
119595-51030	27	4
119595-51050	27	5
119595-51060	27	7
119595-51070	27	8

PARTS No. INDEX

PARTS No.	Fig.	Ref.No.
119595-51100	27	12
119595-51200	27	20
119595-51300	27	29
119595-51330	27	32
119595-51341	27	33
119595-51410	27	41
119595-53300	31	10
119595-59150	32	8
119595-59151	32	8 -1
119595-59711	31	20
119595-59721	31	21
119595-59731	31	22
119595-59741	31	23
119595-59750	31	24
119595-59762	31	25
119595-59950	32	14
119595-61170	28	7
119595-91290	38	16
119620-01750	3	2
119620-49290	12	14
	16	11
	24	12
119773-07280	6	5
119773-77030	36	44 -1
119773-91300	38	17
119773-91301	38	17 -1
119773-91400	38	10
119773-91500	38	20
119773-91501	38	20 -1
119773-91600	38	4
119773-91650	38	5
119773-91700	38	39
119773-91850	34	5
	38	46
119885-01990	1	4 -1
120130-91860	39	6
120147-91760	41	14
120220-66250	34	33
120270-77101	38	42
120320-61540	28	35
120323-53080	31	5
120323-53100	31	6
120323-53120	31	7
120323-53130	31	8
120323-53410	31	13
120323-53440	31	14
120323-61420	28	11
120323-61430	28	14
120324-07240	6	1
120324-11900	7	40

PARTS No.	Fig.	Ref.No.
120324-11910	7	41
120324-55750	33	1
120324-55760	33	2
120324-61551	28	110
120445-44640	10	6
		14
121023-01550	2	2
121254-77401	36	2
121254-77402	36	2 -1
121254-77410	36	3
121254-77420	36	4
121254-77430	36	5
121254-77480	36	10
121254-77510	36	13
121254-77511	36	13 -1
121254-77520	36	14
121254-77521	36	14 -1
121254-77540	36	15
121254-77541	36	15 -1
121254-77570	36	17
121254-77571	36	17 -1
121254-77580	36	18
121254-77581	36	18 -1
121254-77590	36	19
121254-77600	36	20 -1
121254-77610	36	21 -1
121254-77640	36	23
121254-77661	36	25
121254-77670	36	26 -1
121254-77671	36	26 -2
121254-77681	36	27
121254-77690	36	28
121254-77700	36	29
121254-77730	36	32
121254-77770	36	36
121254-77780	36	37
121254-77790	36	38
121254-77810	36	39
121575-91250	40	13
	41	16
121750-03080	8	15
121750-59890	32	40
	38	41
		67
121750-59910	32	13
121850-01900	30	25
121850-01920	2	9
121850-03050	8	13
121850-11150	7	19
121850-11800	7	45

PARTS No.	Fig.	Ref.No.
121850-21920	14	5
121850-35200	16	30
121850-51700	27	58
121850-61470	28	16
121850-61670	28	48
121950-28420	17	2
121950-51910	27	63
121952-51900	27	61
122210-92600	42	3
122780-51900	27	62
122780-59100	31	16
123325-49220	26	8
123325-59420	32	4
	33	14
123372-59100	31	17
123472-59120	31	18
123482-39670	38	24
123482-91291	39	9
	40	14
	41	17
123658-18910	11	36
123672-21500	14	9
123672-21861	14	11
123672-55750	32	30
123672-55760	32	31
123672-55811	33	13
123672-84530	16	35
123678-55700	32	28
123678-55720	32	29
123678-55770	32	32
123678-55790	32	33
123678-55850	32	34
123678-55860	32	35
123678-55870	32	36
123678-55880	32	37
123678-55890	32	38
123682-07851	6	17
123682-77710	38	6
124060-39452	38	13
124080-77390	37	10
124080-77520	37	12
124160-01751	8	1
124160-11360	8	5
124160-39140	9	9
	18	1
		23
	38	23
	43	15
124410-51050	27	6
124410-51861	29	24

PARTS No.	Fig.	Ref.No.
124411-01780	3	3
124411-03051	8	14
124411-28400	1	30
	17	1
124411-35520	16	34
124413-39100	19	1
124450-39240	18	18
124460-77680	12	40
	24	13
124550-77030	36	44
124610-01851	2	6
124610-01862	2	7
124610-51970	28	3
124610-77010	36	1
		1 -1
124610-77019	36	1 -2
124610-77550	36	16
124610-77640	36	23 -2
124610-77660	36	25 -2
124610-77690	36	28 -1
124616-61580	28	113
124616-91370	38	57
124617-11120	7	16
124617-11130	7	17
124617-91980	39	4
	40	4
	41	4
124617-91990	39	26
	40	39
	41	44
124766-59050	12	15
124770-49310	38	1
	43	17
124790-44560	24	21
124790-55770	10	10
	12	37
124976-34850	43	1
127410-21480	14	17
127495-08320	5	7
127495-61540	28	24
127495-61660	28	47
127605-48590	23	14
127610-39350	18	26
127610-49010	25	15
127610-55820	32	41
127610-91350	38	18
127610-92750	42	4
127620-91250	41	11
127675-91163	40	1
127675-91193	41	1

PARTS No. INDEX

PARTS No.	Fig.	Ref.No.
127687-18910	12	32
127687-39360	18	27
127687-91870	39	7
	40	41
	41	46
127687-91880	39	28
	40	40
	41	45
127691-52010	27	80
	29	1
127692-91410	39	22
	40	35
	41	40
127692-91440	39	23
	40	36
	41	41
127692-91450	39	24
	40	37
	41	42
127695-61071	28	88
127695-61450	28	15
127695-61840	28	58
127695-61961	28	143
127695-91220	38	15
128170-86500	34	31
128170-86501	34	31 -1
128170-91160	38	14
128171-07150	6	13
128296-07190	6	8
128296-07260	6	2
128296-07300	6	3
128296-07350	6	4
128296-07400	6	9
128296-07420	6	10
128296-07450	6	11
128296-07460	6	12
128371-01800	3	4
128377-59860	32	1
128391-91440	39	16
128391-91640	39	15
128391-91700	39	27
128391-91930	39	11
129100-01580	1	11
		12
		13
	5	1
129100-61930	28	142
129107-44590	10	5
129150-11750	7	32
129155-51270	27	24

PARTS No.	Fig.	Ref.No.
129155-51270	27	25
129155-51280	27	26
		27
129155-51410	27	42
129170-91610	39	17
	40	30
	41	34
129170-91650	39	8
	40	11
129170-91800	40	16
	41	19
129170-91810	40	10
	41	7
129170-91890	40	19
129170-91930	40	20
129171-44600	10	3
129171-44620	10	4
129470-67320	34	4
129470-91190	40	7
	41	23
129470-91191	39	10
	40	15
	41	18
129490-77910	38	9
129574-77710	38	50
129574-77720	38	51
129574-77980	38	48
129574-91210	40	5
	41	5
129574-91221	40	6
	41	47
129574-91240	41	10
129574-91311	41	6
129574-91410	40	12
	41	15
129574-91420	39	13
	40	22
	41	26
129574-91430	40	25
	41	29
129574-91440	40	28
	41	32
129574-91490	41	12
129574-91560	38	44
129574-91561	38	44 -1
129574-91570	38	45
129574-91600	41	38
129574-91620	39	12
	40	21
	41	25

PARTS No.	Fig.	Ref.No.
129574-91630	40	24
	41	28
129574-91640	40	27
	41	31
129574-91650	39	21
	40	34
	41	39
129574-91710	39	18
	40	31
	41	35
129574-91720	39	14
	40	23
	41	27
129574-91730	40	26
	41	30
129574-91740	40	29
	41	33
129574-91750	39	19
	40	32
	41	36
129574-91760	39	30
	40	42
	41	48
129574-91770	39	20
	40	33
	41	37
129574-91780	40	17
	41	20
129574-91790	40	18
	41	21
129574-91852	40	38
	41	43
129574-91862	40	9
	41	9
129574-91870	39	3
	40	3
	41	3
129574-91880	41	13
129574-91890	41	22
129574-91930	41	24
129590-18520	9	8
129590-67310	34	24
129593-91420	38	19
129595-61600	28	36
129595-61610	28	37
129595-61620	28	38
129595-61670	28	49
129595-61680	28	50
129772-77280	37	35
129795-61470	28	17

PARTS No.	Fig.	Ref.No.
135210-61090	28	89
144606-54900	30	28
144606-54910	30	29
144626-51090	27	11
144626-51680	27	57
144626-51950	27	65
144626-61781	28	52
		138
144626-91570	38	21
148616-59430	32	5
148616-61650	28	46
171078-66551	34	1
171301-01640	4	2
171353-61460	28	108
177040-09050	42	1
180110-51910	27	64
183350-55130	38	68
194250-51660	8	20
	38	2
		2 -1
196630-12980	6	6
198451-78680	39	29
	40	43
	41	49
41650-550310	32	27
41650-550810	32	39
41701-001720	34	22
41710-000410	34	23
41710-001300	34	34
41730-000681	34	32
43530-500610	25	17
43662-030030	25	18
43720-001220	19	2
719573-01540	4	1
719575-01560	1	1
719575-11701	7	1 -2
719575-22720	15	1 A-1
719575-51300	27	1
719575-53100	31	1
		1 A
719575-53200	31	1 A-1
719593-02590	1	20
719593-02800	1	17
719593-11650	7	29
719595-11700	7	1
719595-11701	7	1 -1
719595-21700	14	1
719595-22720	15	1
		1 A
719595-23600	15	16

PARTS No. INDEX

PARTS No.	Fig.	Ref.No.
719595-23701	15	11
719595-54801	30	1
720445-44201	24	18
977780-01200	21	1
977780-01210	20	1
977780-01230	20	2
	21	2
977780-01240	21	3
977780-01250	20	3
977780-03000	20	9
	21	9
X0044021509	20	7
	21	7
X0271141040	29	17
		18
X0293314230	29	19
		20
X0293316030	29	11
X0293326030	29	6
X0296316060	29	12
X0297314680	29	16
X0300120414	33	8
X0311121522	33	6
X0313080110	33	12
X0314080110	33	10
X0580121073	33	7
X0582810173	33	5
X0588080273	33	11
X0588530373	16	16
		21
X0600160122	33	9
X1521001120	29	3
X1521021300	29	4
X1521051500	29	5
X1521114020	29	7
X1521150500	29	8
X1521160200	29	9
X1521170100	29	10
X1521210400	29	13
X1522006720	29	14
X1523005920	29	15
X1523200100	29	21
X179100011X	21	5
X179100021X	20	5
X179100100X	20	6
	21	6
X199903800X	20	8
	21	8
X211810030	12	10
X213017001	36	26

PARTS No.	Fig.	Ref.No.
X213035002	36	25 -1
X21304400	36	20
X213046003	36	27 -1
X214320104	12	9
X22501113	36	23 -1
X2740134001	33	3
X6303BM0000	37	18
X8636008003	20	4
	21	4
XJD532012	11	27
XKWPY642021	23	2
XL150M14041	37	17
XL155G1330	37	8
XL180120000	37	4
XL180832000	37	13
XL180G13012	37	6
XL180G43150	37	7
XL180G61000	37	2
XL180G63006	37	5
XL180G85001	37	20
XL225431800	37	11
XL225G1325	37	9
XL235340110	37	16
XNB133206	11	25
XNE973420	11	22
XNE974250	11	13
XNE977160	11	16 -1
XNE977180	11	16
XNH171881	11	4
XNH172003	11	2 -1
XNH172500	11	10
XNH173436	11	22 -1
XNH174307	11	15
XNH174404	11	14
XNH175702	11	9
XNH178265	11	17
XNH191305	11	6
XNH193006	11	24
XNH261605	11	5
XNH271331	11	2
XNH271351	11	3
XNH273502	11	12
XNH362809	11	21
XNH961270	11	26
XNH963611	11	26 -1
XNH978942	11	28
XNN137007	11	19
XNN137423	11	18
XNN171107	11	7
XNN171110	11	8

PARTS No.	Fig.	Ref.No.
XNN173204	11	23
XNN173504	11	11
XNN976562	11	20

PARTS No.	Fig.	Ref.No.
-----------	------	---------



YANMAR CO., LTD.