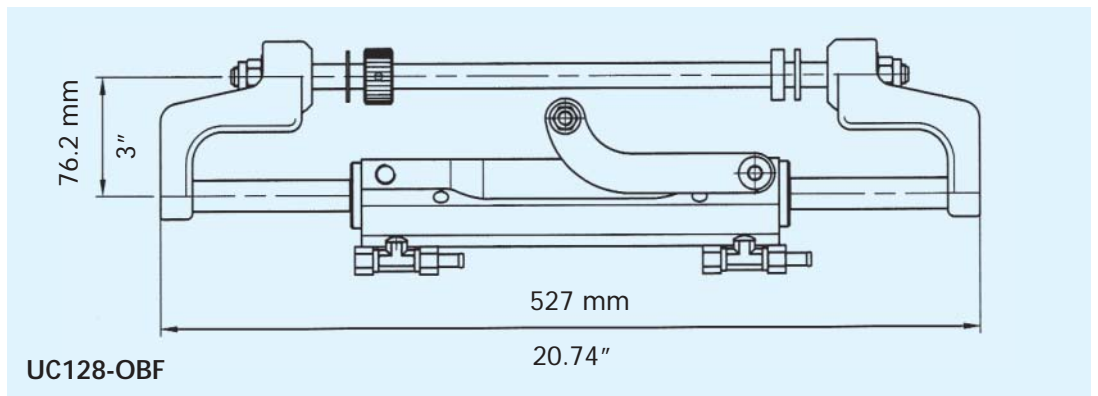




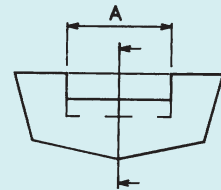
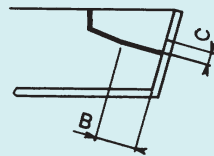
UC128-OBF - Balanced: the number of turns lock-to-lock is equal port to starboard or vice-versa

**UC128-OBF
FRONT
MOUNT
CYLINDER**

SPECIFICATIONS	UC128-OBF
Volume	128 cc - 7.8 cu. in
Output force	450 kg - 992 lbs
Inside diameter	35 mm - 1.37"
Stroke	198 mm - 7.79"
Fittings	For 3/8" high pressure flex hose

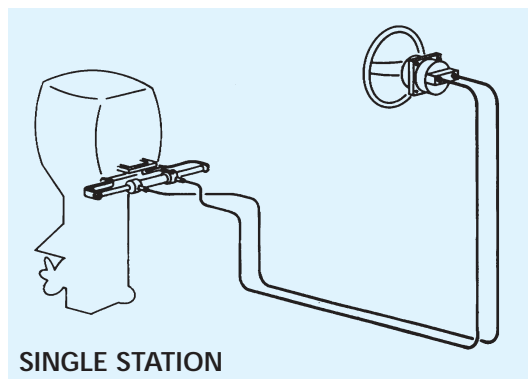


SPLASHWELL DIMENSION REQUIREMENTS



Number of engine	A	B	C
1	540 mm - 21.25"	152 mm - 5.98"	152 mm - 5.98"
2	1110 mm - 43.70"	152 mm - 5.98"	152 mm - 5.98"

For twin engine applications minimum engine center distance is 550 mm (21.6")



UC128-OBF FRONT MOUNT CYLINDER

JOHNSON & EVINRUDE®

POWER	YEAR
90 - 300 hp	1977 - 1990
90 - 225 hp	1991 to date
150 - 175 hp	1991 to date
250 - 300 hp	1991 to date
65 - 155 hp	1977 - 1990
100 - 155 hp	1991 to date
80 - 105 hp	1991 to date

MERCURY & MARINER®

POWER	YEAR
150 - 200 hp	1984 only
90 - 115 hp	1984 only
115 - 220 hp	1985 - 1988
100 - 115 hp	1989 only
135 - 250 hp	1989 only
75 - 250 hp	1990 only
75 - 275 hp	1991 to date

APPLICATIONS

SUZUKI®

POWER	YEAR
150 - 220 hp	1986 to date
100 hp	1990 to date

YAMAHA®

POWER	YEAR
115 - 220 hp	1984 - 1985
115 - 220 hp	1986 only
115 - 220 hp	1987 to date
250 hp	1990 to date
70 - 90 hp	1989 to date
80 - 140 hp	1990 to date

TOHATSU®

POWER	YEAR
120 - 140 hp	1990 to date

FORCE®

POWER	YEAR
90 - 150 hp	1985 ad oggi

NOTE:

Multiple OMC Seadrive® installation requires the OMC® synchronization valve (rif. OMC® P. No. 983430)

ORDER GUIDE:

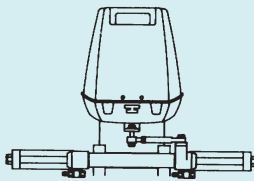
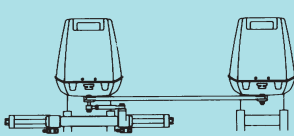
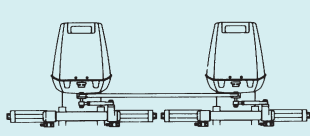


WARNING

This steering system can only be used when the engine is in compliance with the approved U.S. Coast Guard vessel horsepower rating. When installing this cylinder in conjunction with an **ENGINE JACK PLATE** trim system, a manual clearance check must be made in all moveable positions. Failure to comply with the installation manual for engine application, cylinder/hose clearance, and approved hydraulic fluids, may result in loss of steering, causing serious property damage and / or personal injury.

Not for racing applications.

NOTE:
kit OB and kit OB-2S see page 58

SYSTEM DESCRIPTION	COMPONENTS	MODEL	QTY
Single Engine Single Cylinder  Wheel turns: 4,5 Application up to 300 hp max	Front mount cylinder Helm pump Hose kit Oil Steering wheel for additional station add: Helm pump Fitting kit Hose kit Oil Steering wheel	UC128-OBF UP28 KIT OB OIL 15 UP28 KIT OB - 2S KIT OB OIL 15	1 1 1 3 1 1 1 1 1 1
Dual engine Single cylinder  Wheel turns: 3,8 Application: up to 450 hp max (non-counter rotating engine) Application: up to 600 hp max (counter rotating engine)	Front mount cylinder Helm pump Hose kit Oil Tie bar Steering wheel for additional station add: Helm pump Fitting kit Hose kit Oil Steering wheel	UC128-OBF UP33 KIT OB OIL 15 Supplied by engine manufacturer UP33 KIT OB - 2S KIT OB OIL 15	1 1 1 3 1 1 1 1 1
Dual engine Dual cylinder  Wheel turns: 6,5 Application: up to 600 hp max (counter rotating engine) Application: all counter rotating engine	Front mount cylinder Helm pump Hose kit Tee fitting kit Oil Tie bar Steering wheel for additional station add: Helm pump Fitting kit Hose kit Oil Steering wheel	UC128-OBF UP39 KIT OB STANDARD OIL 15 Supplied by engine manufacturer UP39 KIT OB - 2S KIT OB OIL 15	2 1 2 1 3 1 1 1 1 1

